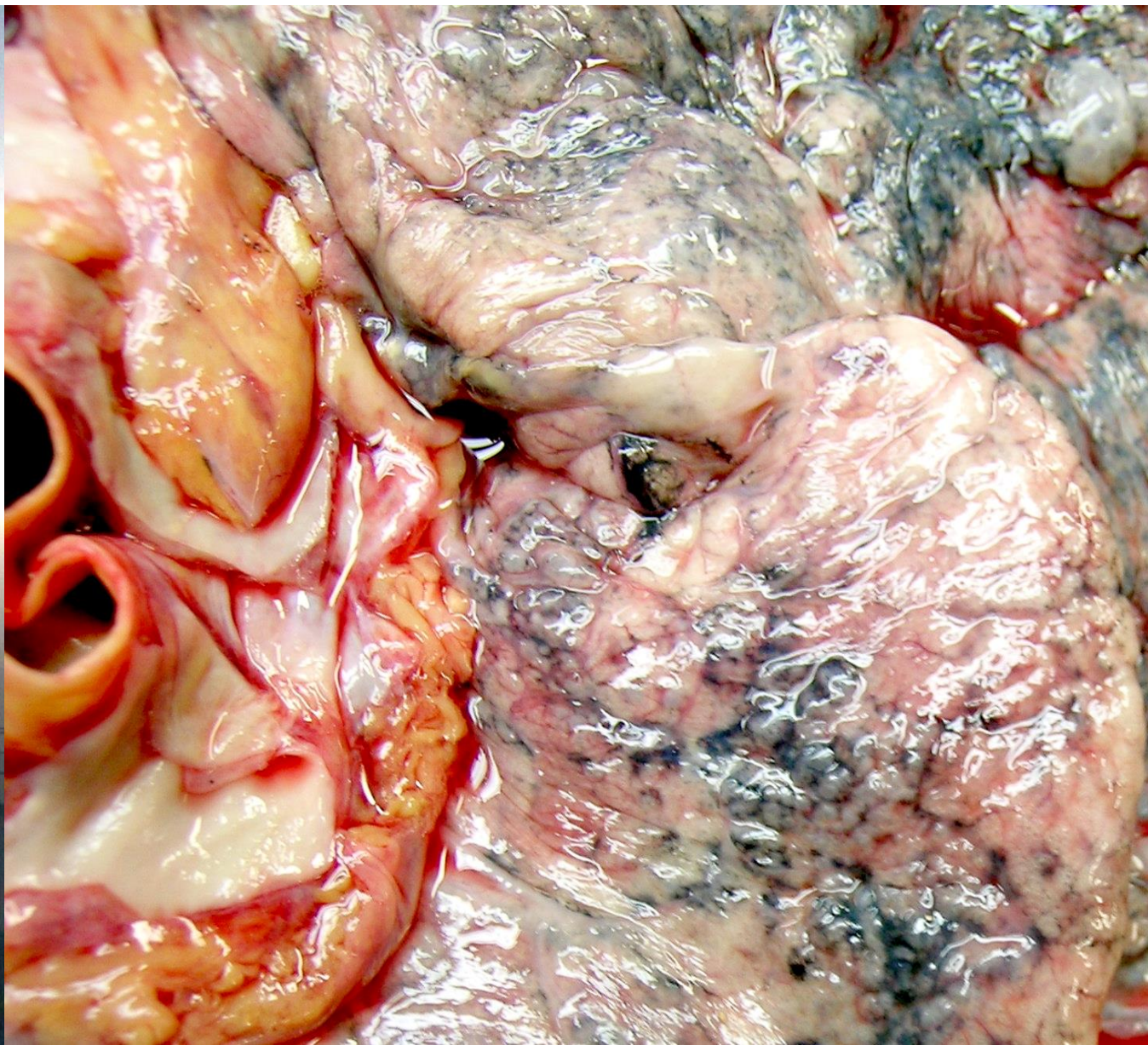


Poluição do ar e saúde humana

Paulo Saldiva

Instituto de Estudos Avançados - USP

pepino@usp.br

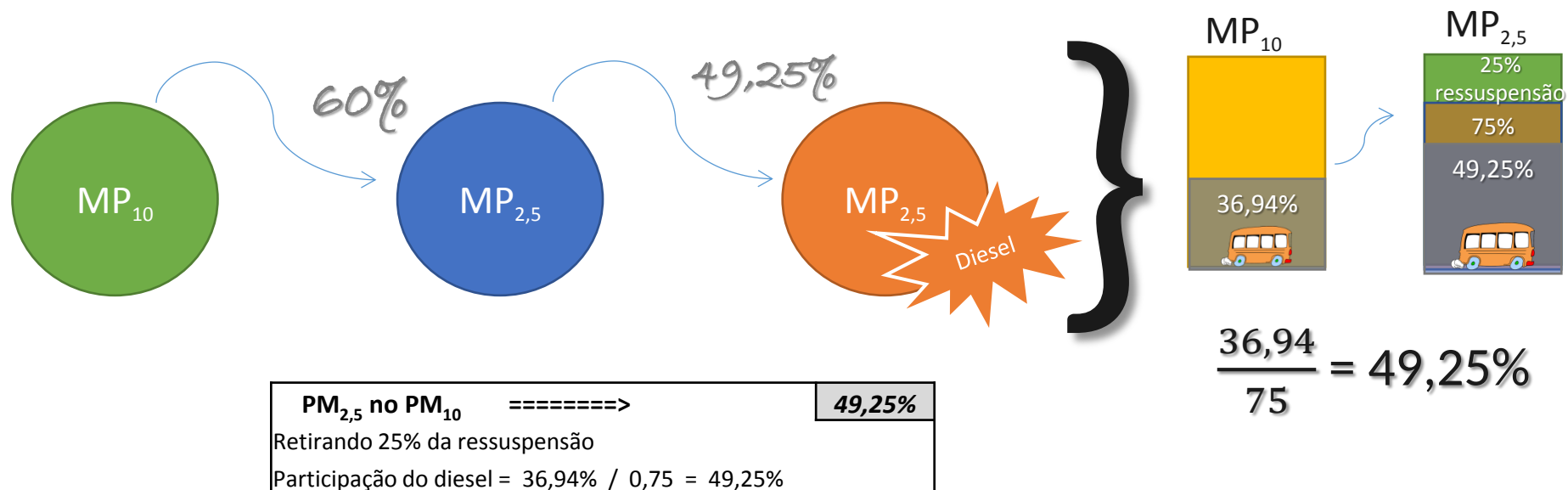


Cálculo Ambiental: MP₁₀ para MP_{2,5} (fonte diesel):

- Para a aferição da concentração de MP_{2,5}, utilizou-se da taxa (0,6) prevista pela CETESB:

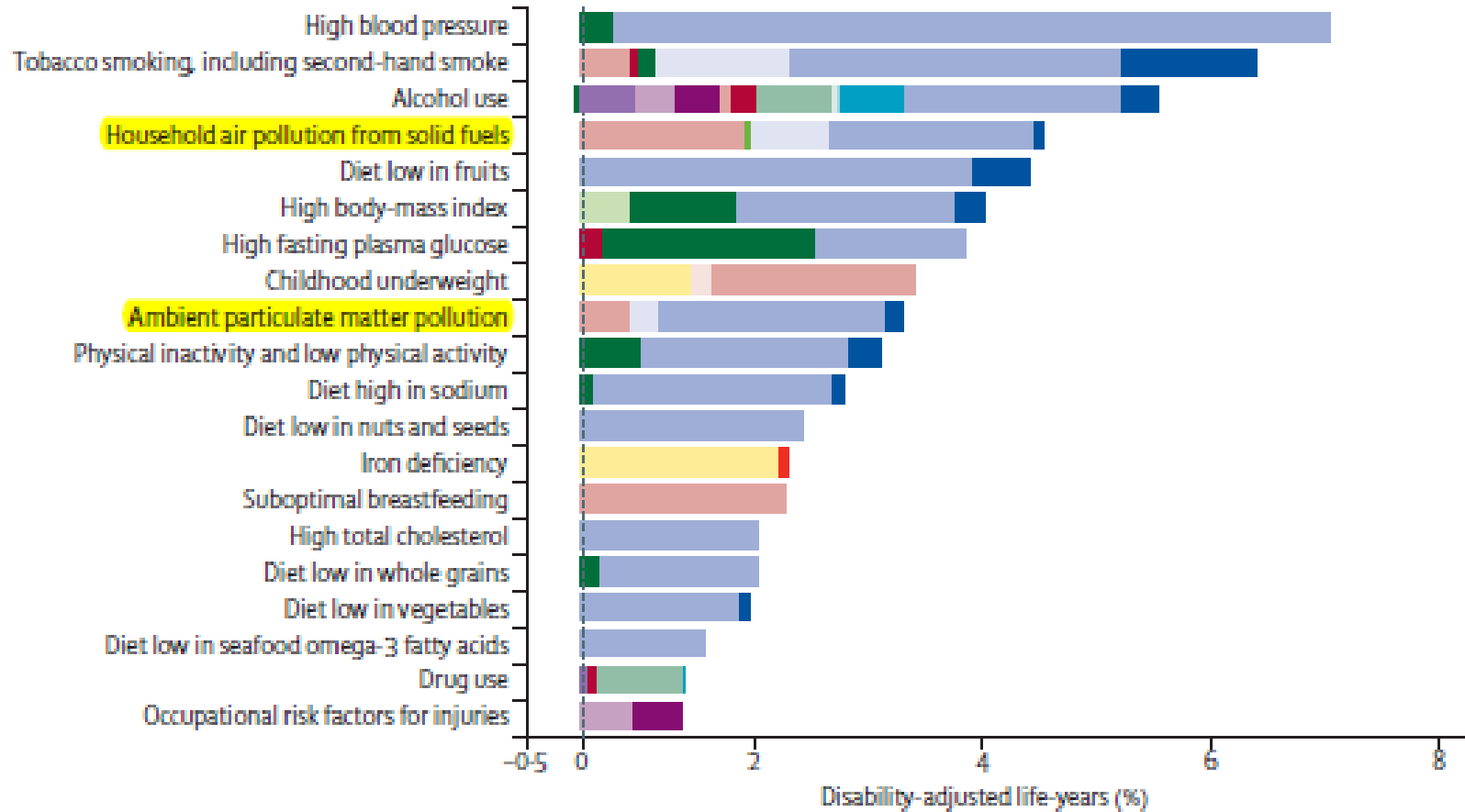
“Quanto à **relação MP_{2,5}/MP₁₀**, as medições realizadas pela CETESB na RMSB, desde 1987, mostraram que o **MP_{2,5} corresponde a cerca de 60% do material particulado inalável (MP₁₀)**.

Estudos realizados pela CETESB indicam que grande parte das partículas inaláveis finas na RMSB é de origem veicular, quer pela emissão direta deste poluente quer pela emissão de gases, destacando-se os compostos orgânicos voláteis e o dióxido de enxofre, que reagem na atmosfera dando origem ao material particulado secundário. **Nesta fração, o aporte de aerossóis provenientes da ressuspensão de poeira de rua não é significativo.**” (CETESB, 2014 p. 64)

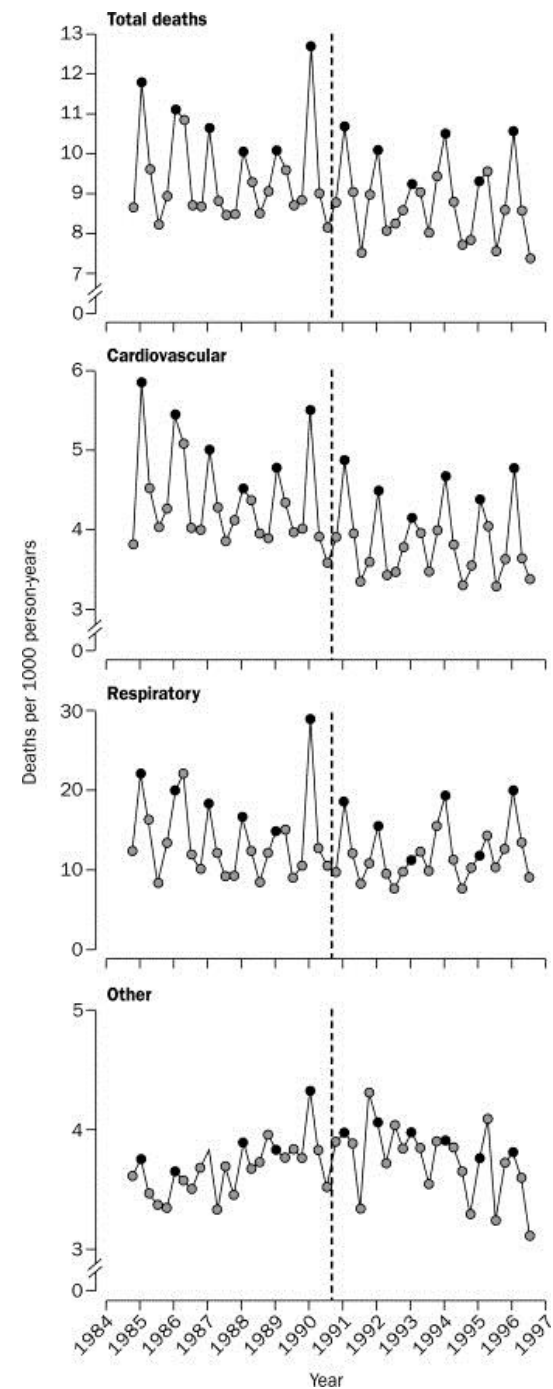
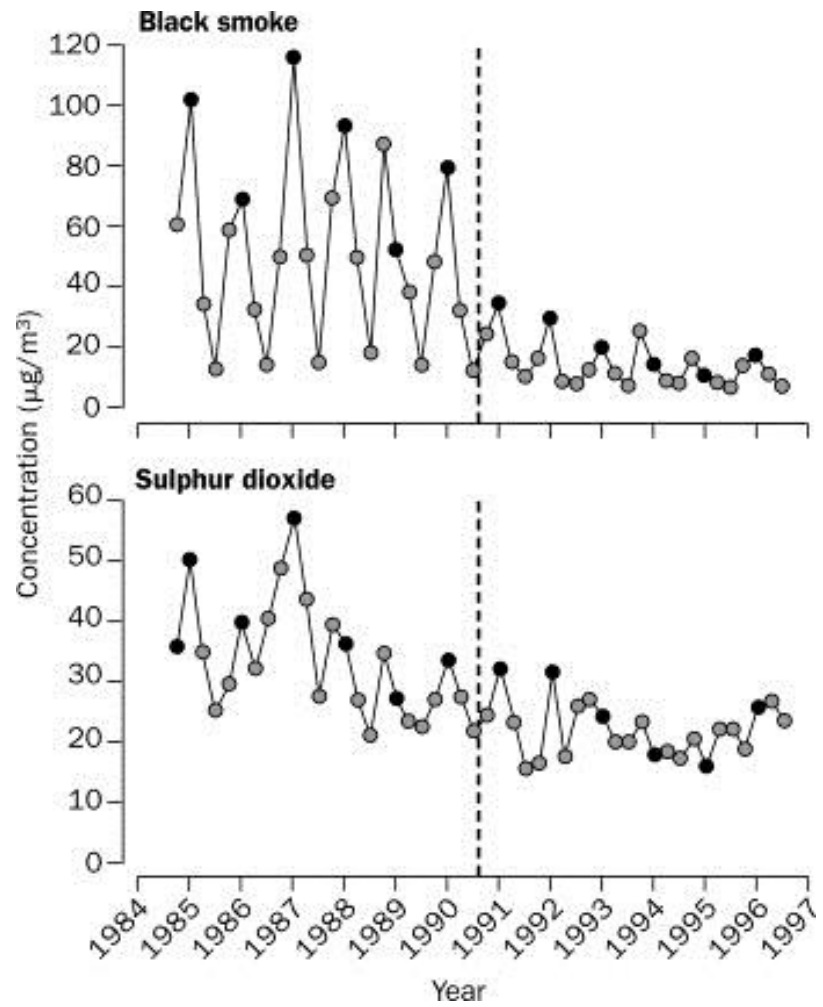


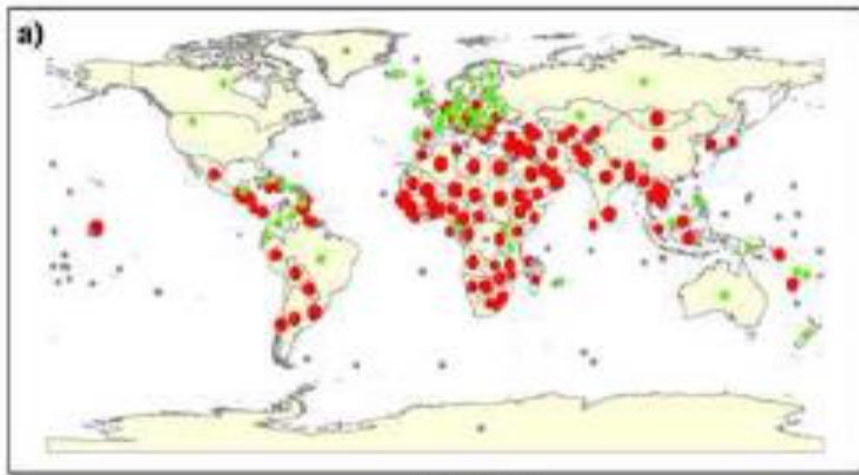


Background



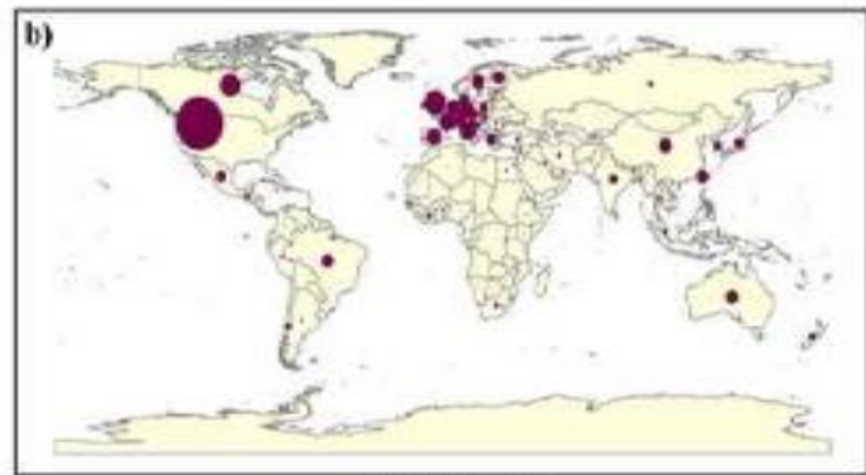
Burden of disease attributable to 20 leading risk factors in 2010, both sex





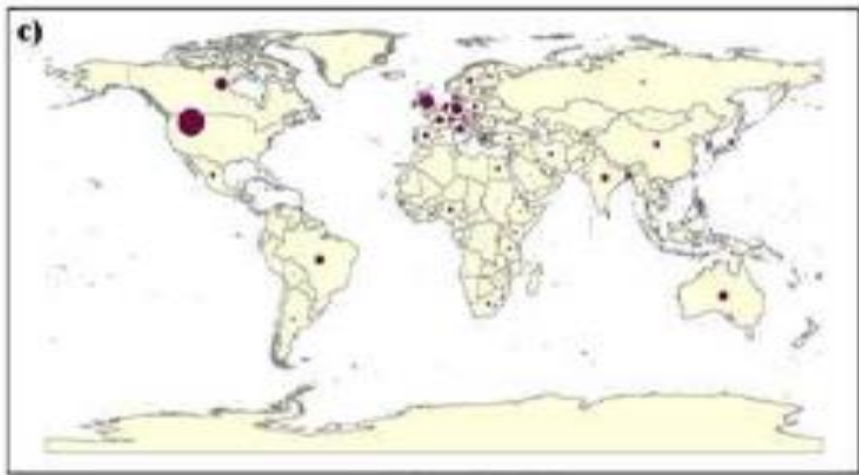
PM10 (μm^3)

- 0 - 5
- 6 - 20
- 21 - 30
- 31 - 50
- 51 - 70
- 71 - 142



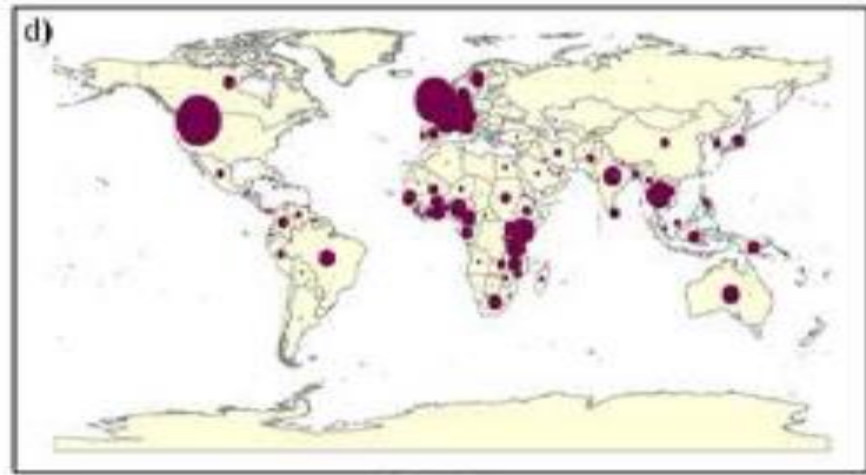
Air pollution articles

- 1
- 10
- 1,000



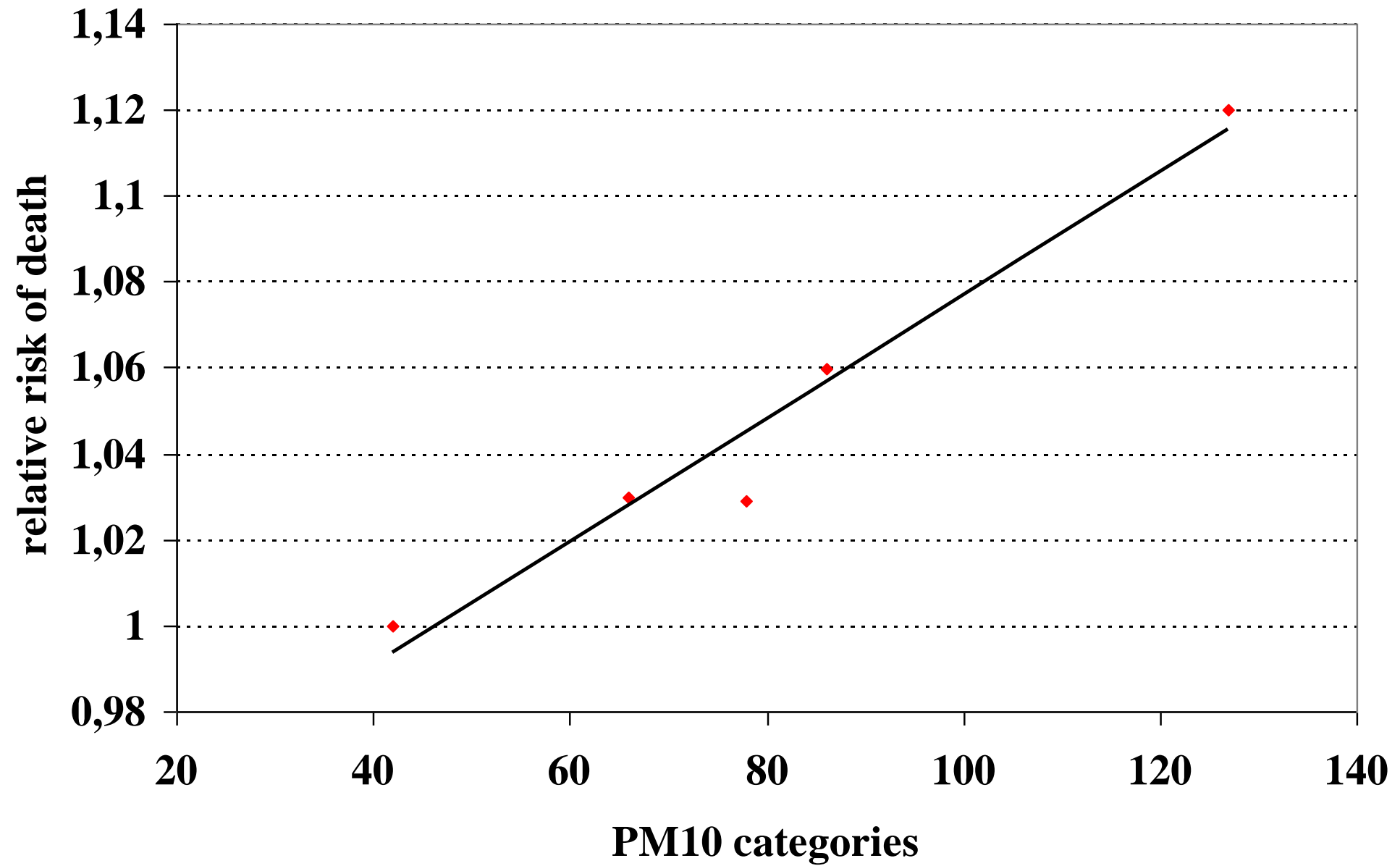
Water quality articles

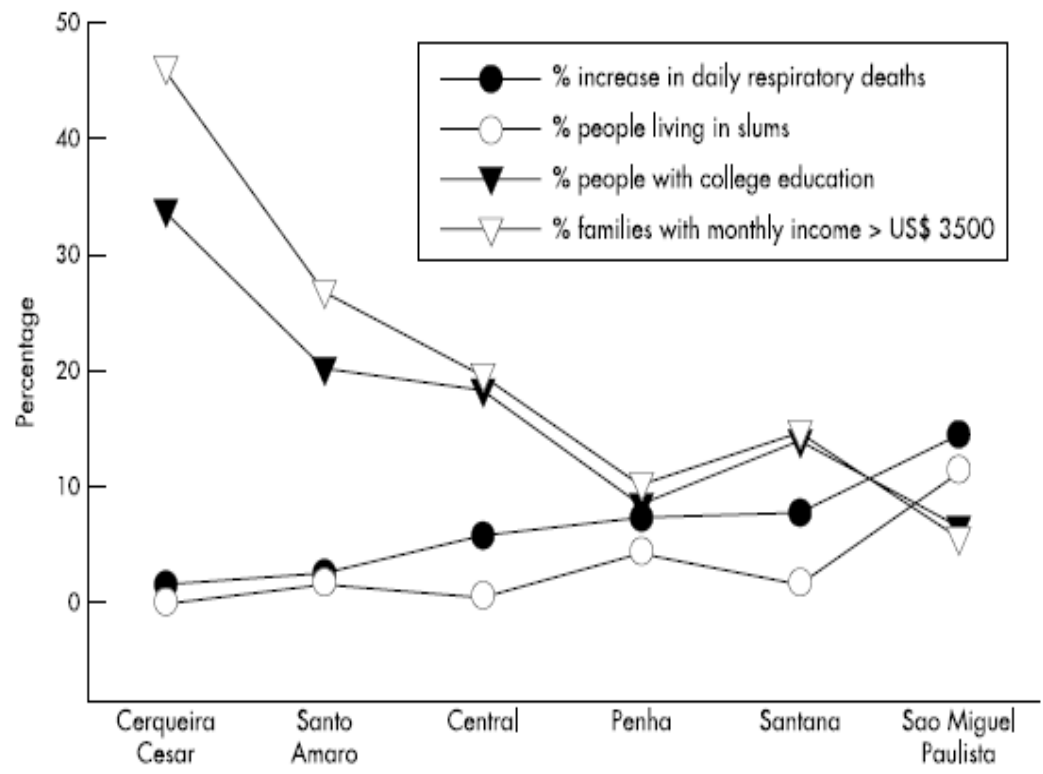
- 1
- 10
- 1,000

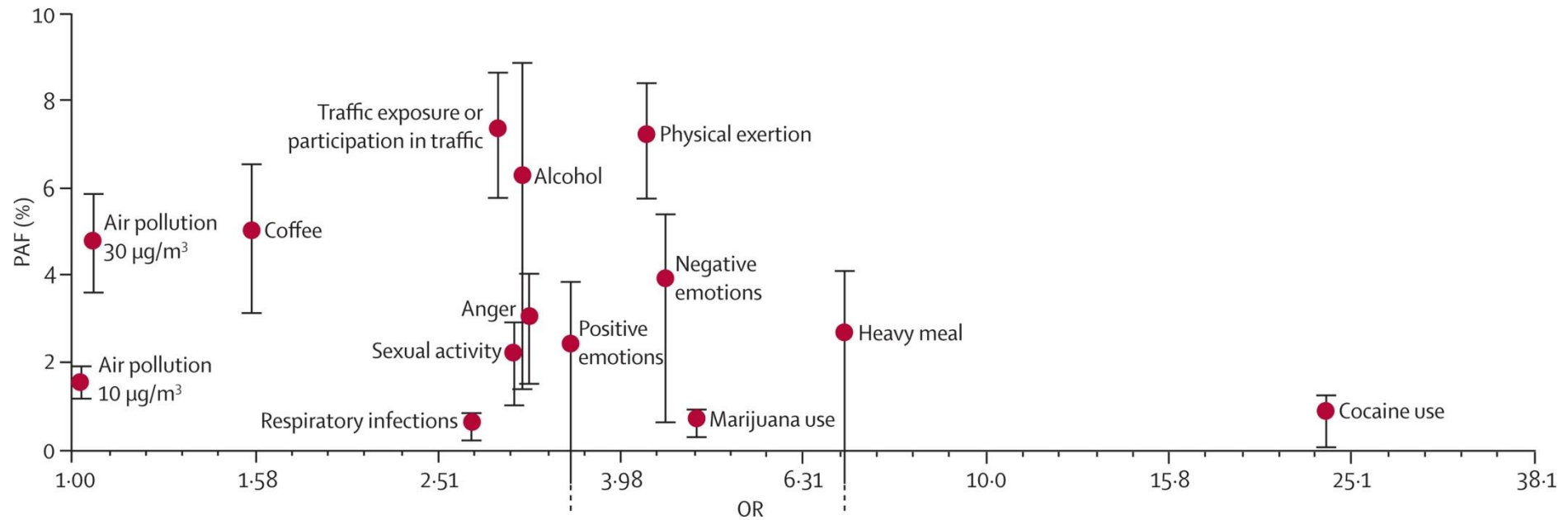


Malaria articles

- 1
- 10
- 1,000

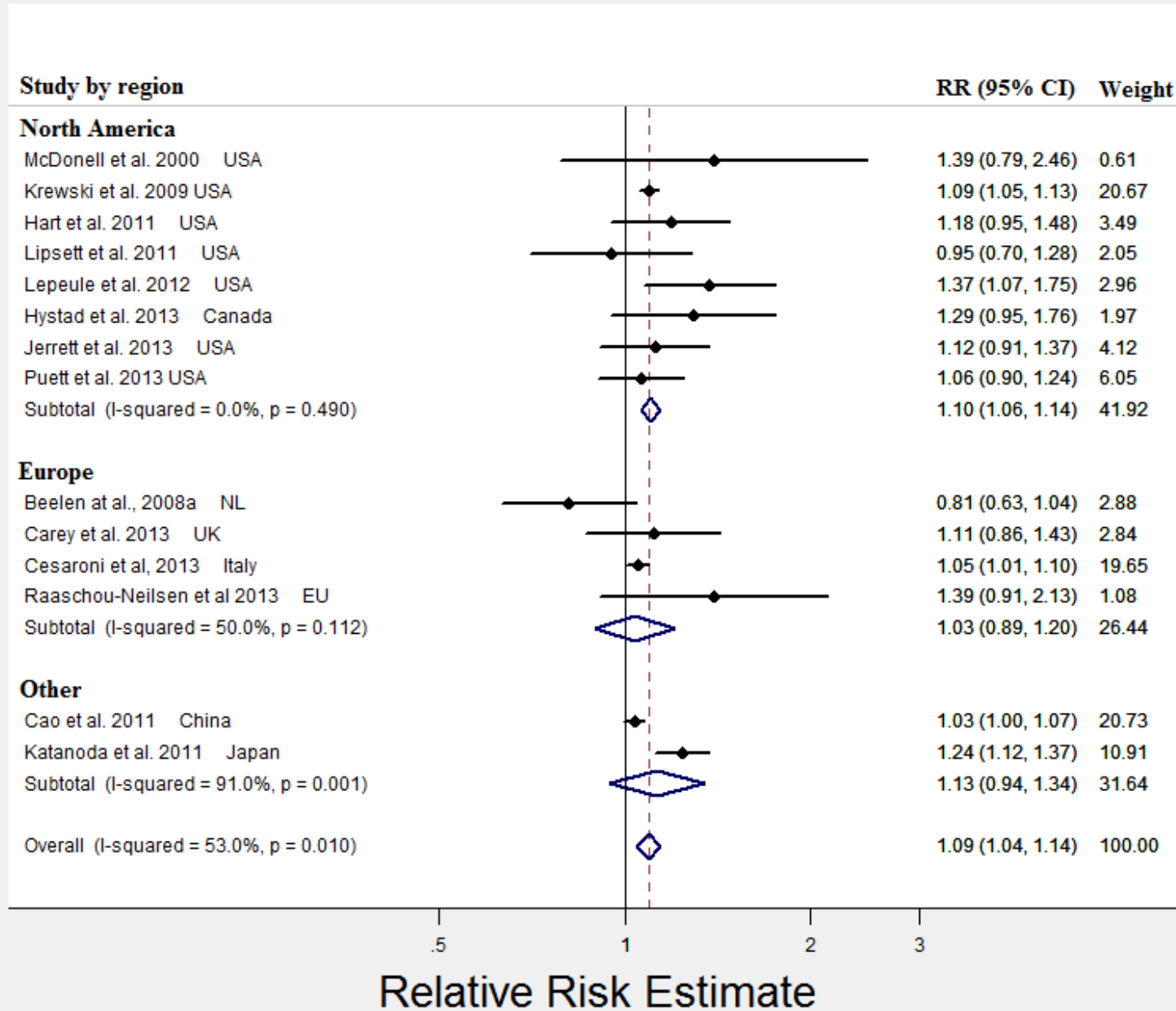




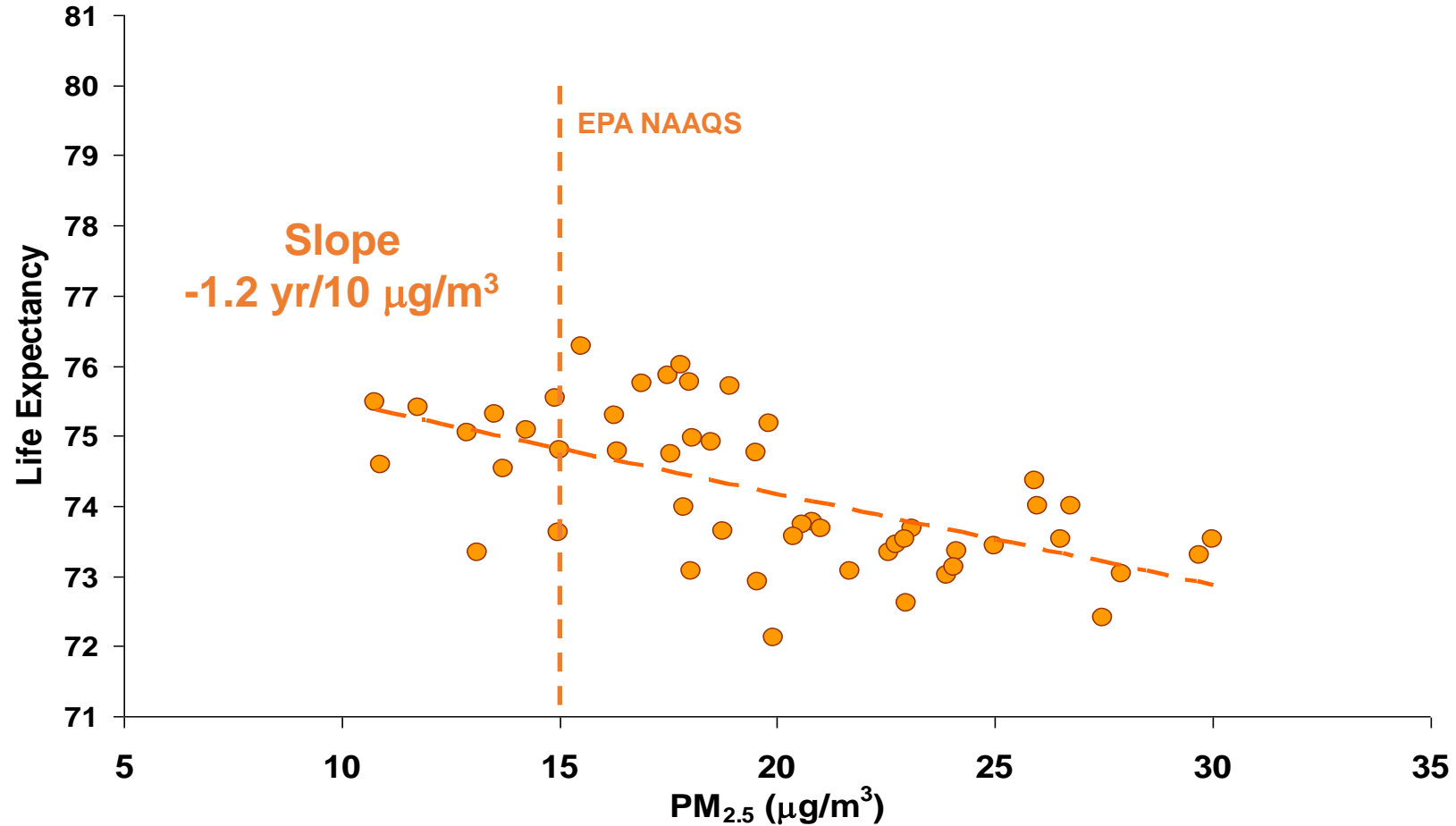


Lancet. 2011 Feb 26;377(9767):732-40

Lung Cancer and PM2.5 Meta-Analysis

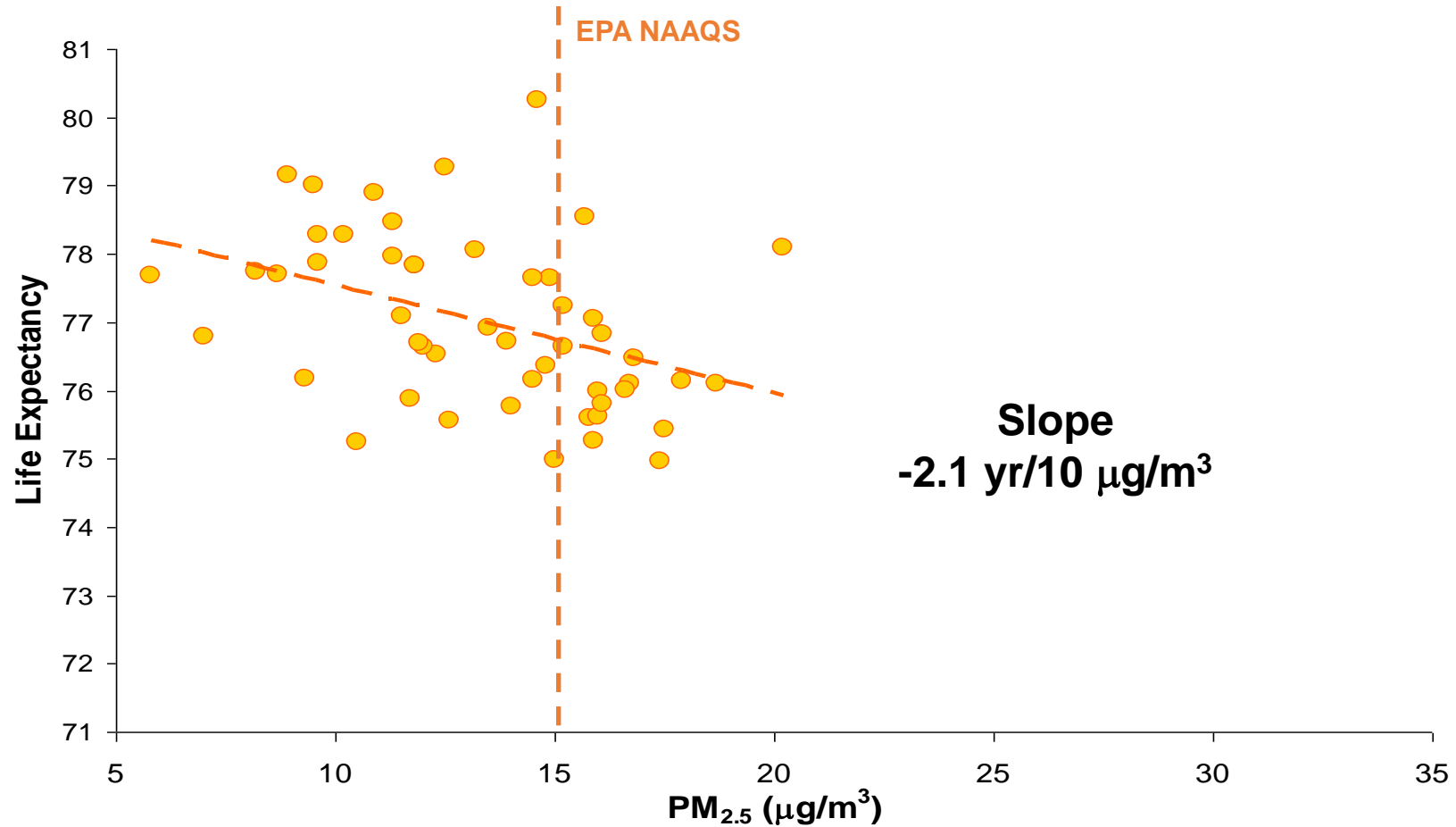


Life Expectancy vs PM_{2.5} 1978-82



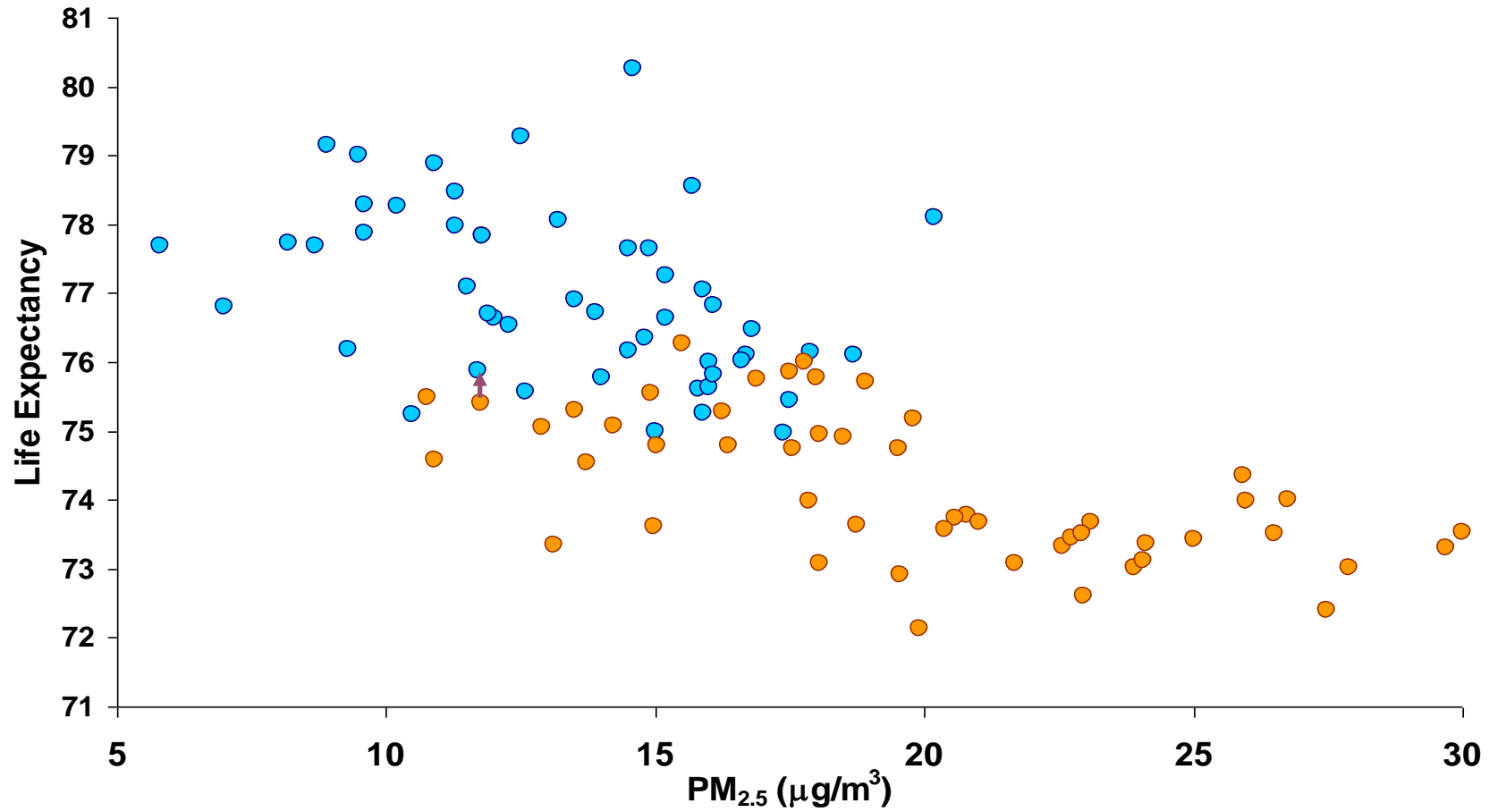
Pope, Ezzati, Dockery (NEJM 2009)

Life Expectancy vs PM_{2.5} 1997-2001



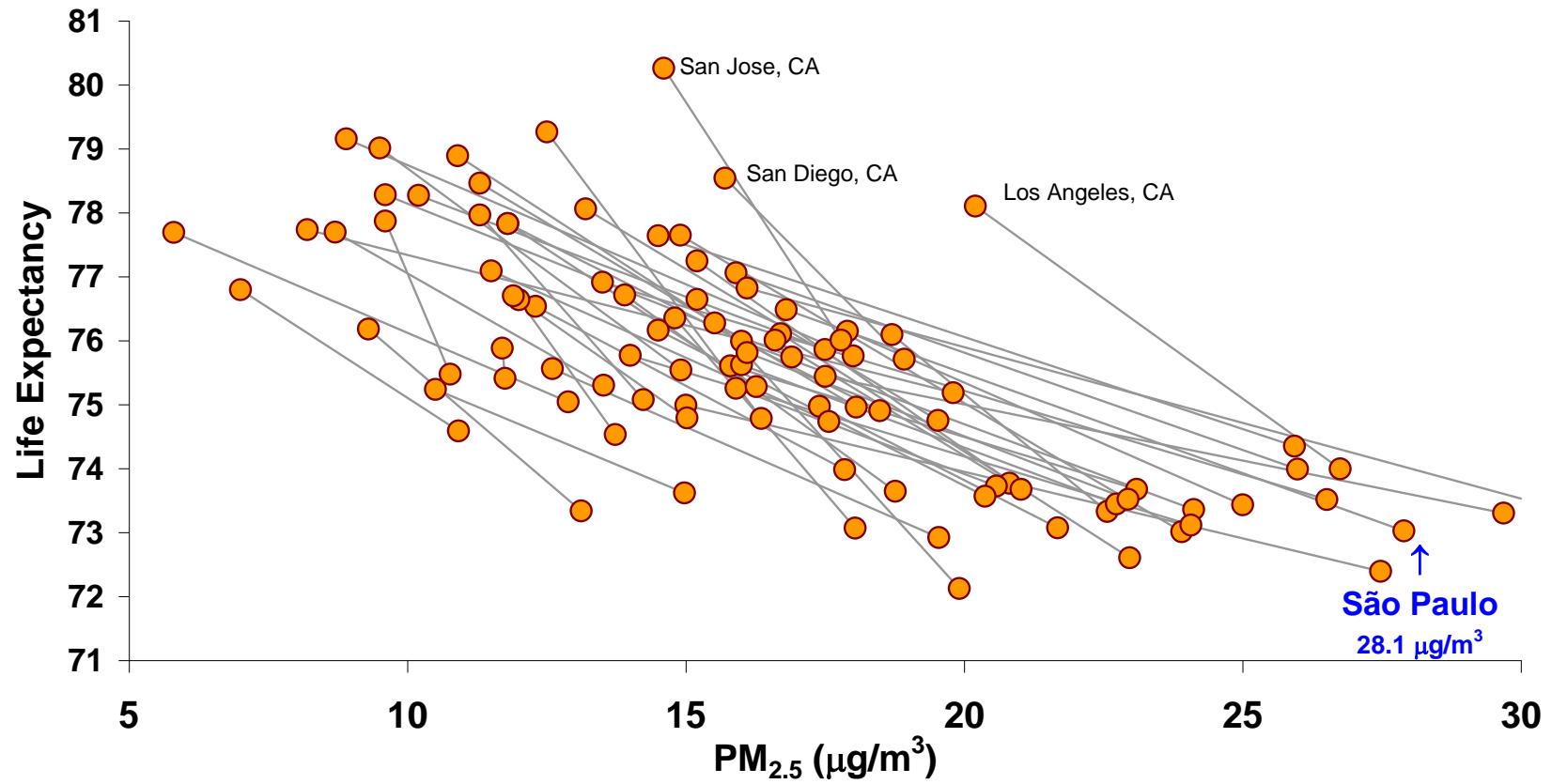
Pope, Ezzati, Dockery (NEJM 2009)

Life Expectancy vs PM_{2.5} 1980-2000



Pope, Ezzati, Dockery (NEJM 2009)

Life Expectancy vs PM_{2.5} 1980-2000



Life Expectancy vs PM_{2.5} 1980-2000

