


Audiências Interativas

SEMINÁRIO
DIA DO BIOMA
PANTANAL

 CÂMARA DOS DEPUTADOS

DIA DO PANTANAL

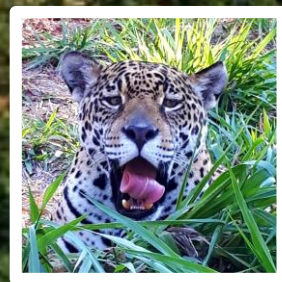
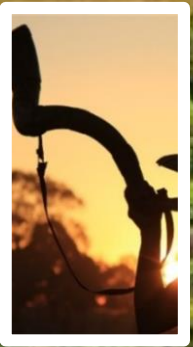


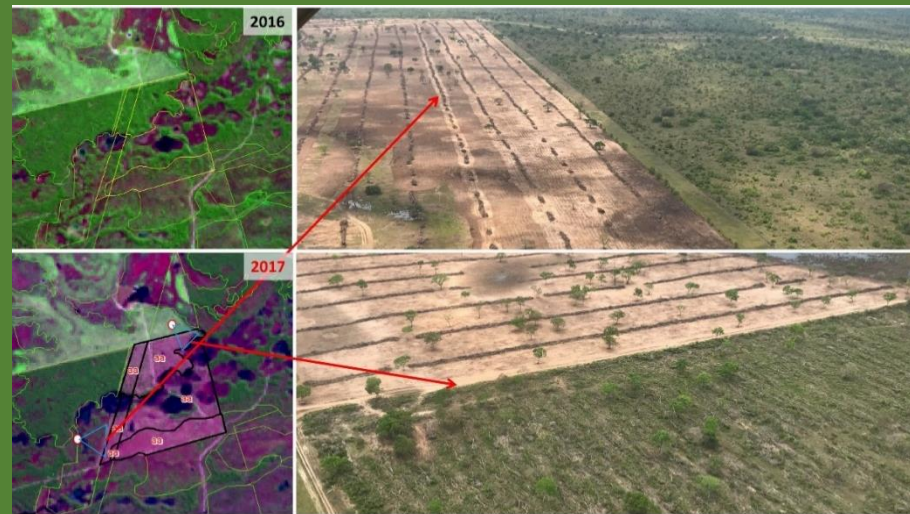
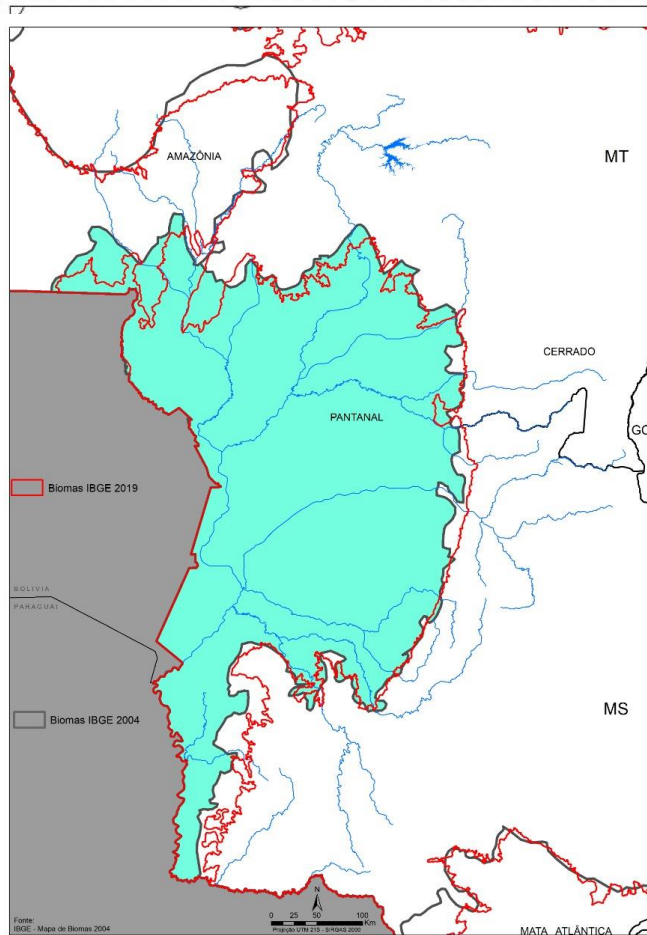
FOTO ADRIANO GAMBARELLI

DIA DO PANTANAL - PORQUE?

CANA-DE AÇÚCAR NA BACIA DO ALTO PARAGUAI – DÉCADA DE 80

DECRETO ESTADUAL 328/1982 – modificado em 2008

FRANCELMO 12 DE NOVEMBRO DE 2005



Pantanal

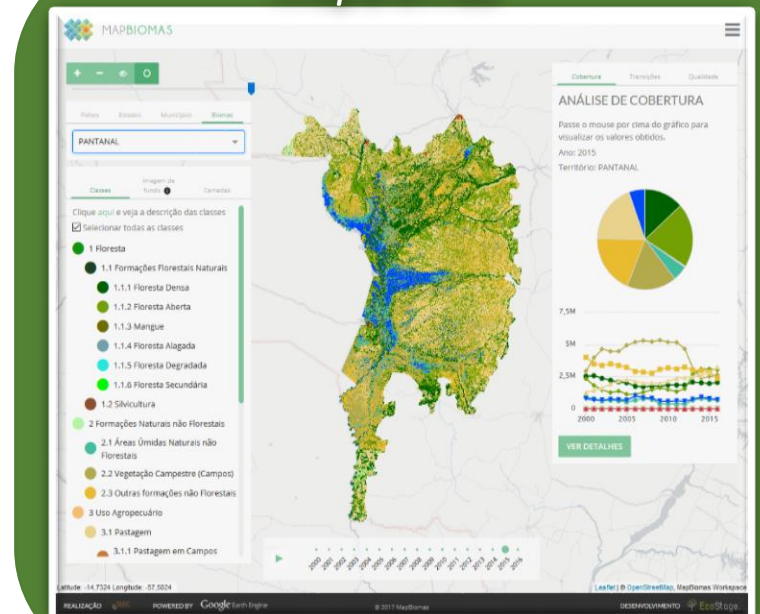
- 151.119 km² (41% da BAP)
 - Natural 126.877 km² (84%)
 - Alterada 24.242 km² (16%)

Planalto (Amazônia/Cerrado)

- 217.502 km² (59% da BAP)
 - Natural 84.576 km² (38,9%)
 - Alterada 132.926 km² (61,1%)

Junho, Julho e Agosto
160 ALERTAS

MapBiomas







OBRIGADO