

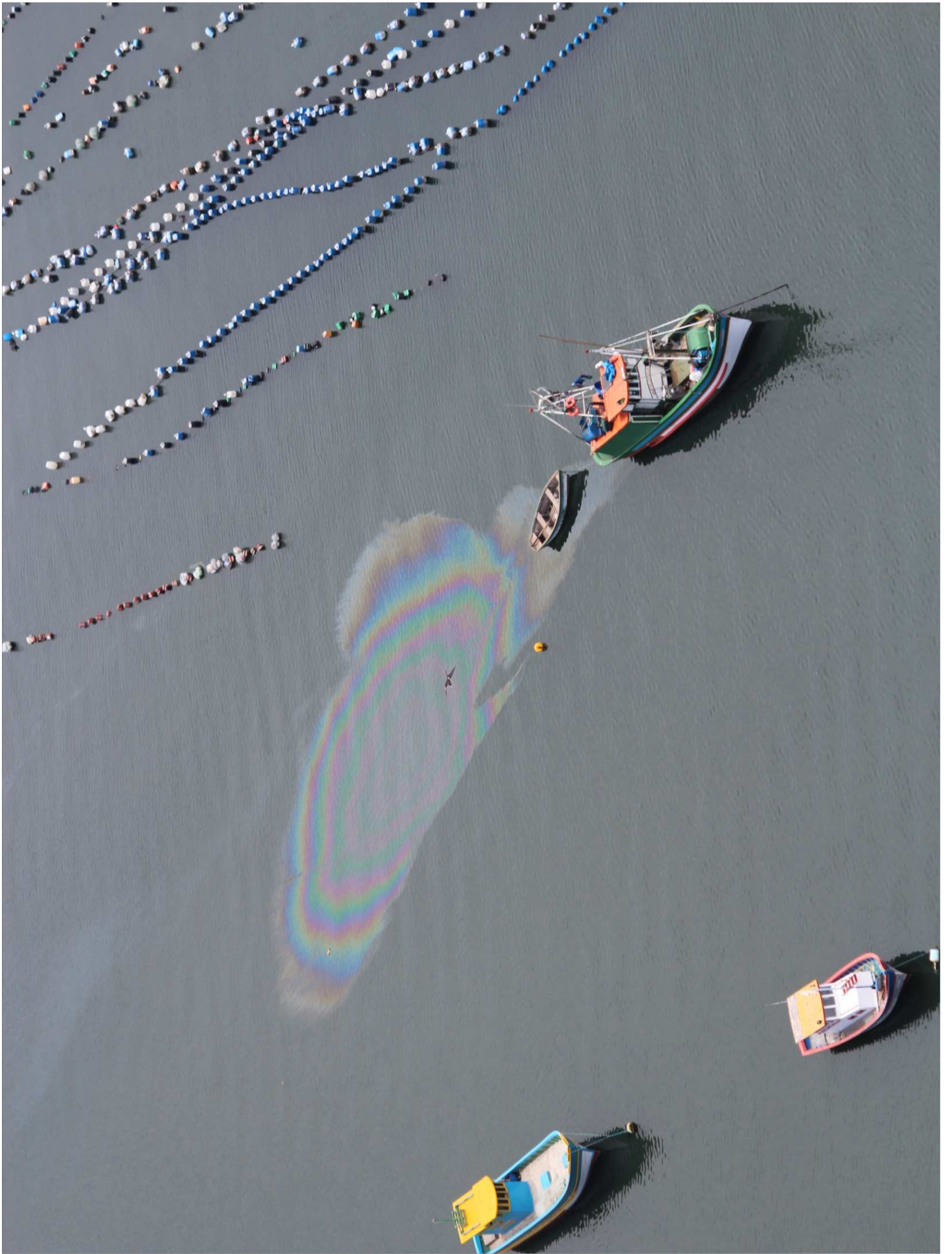


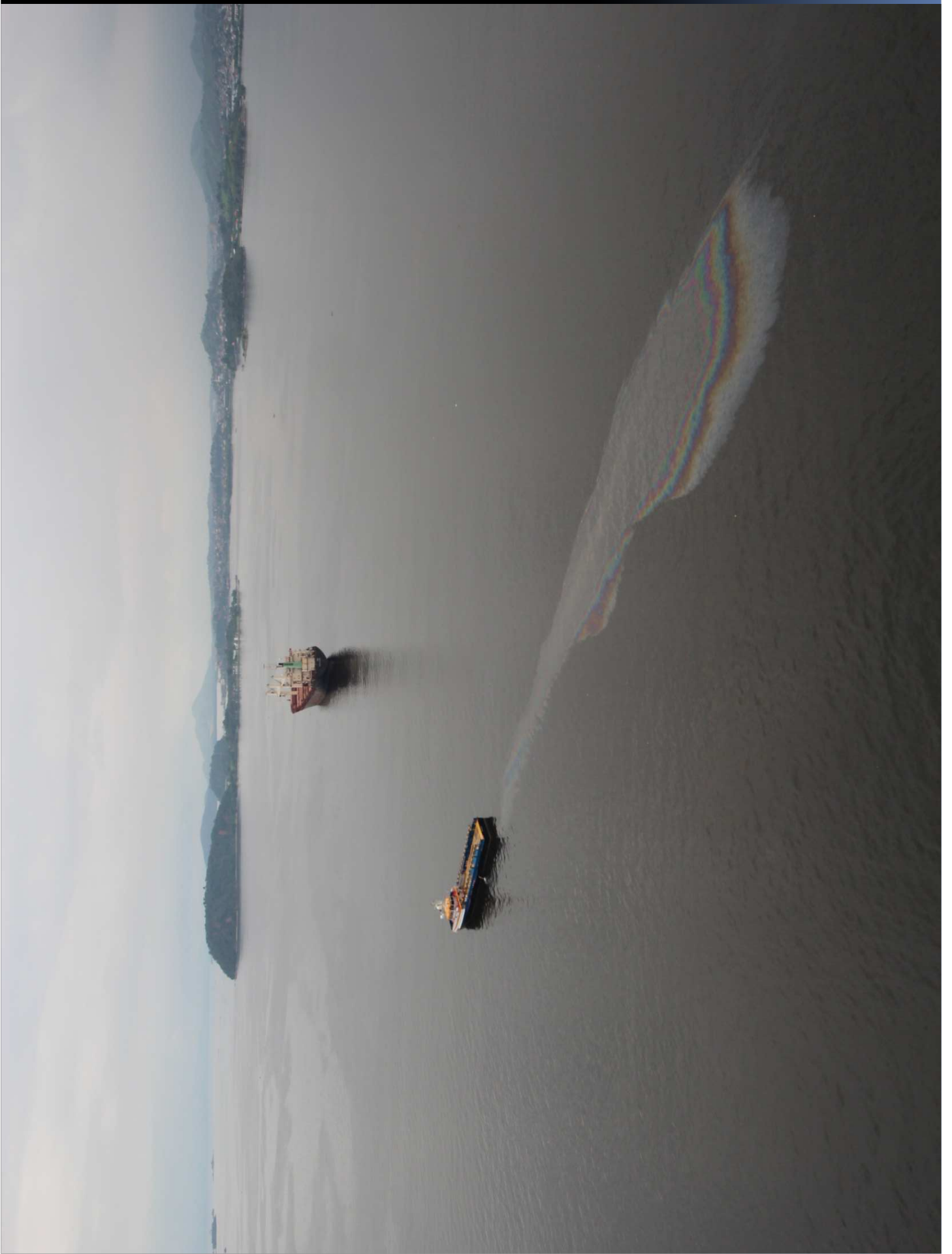
gettyimages

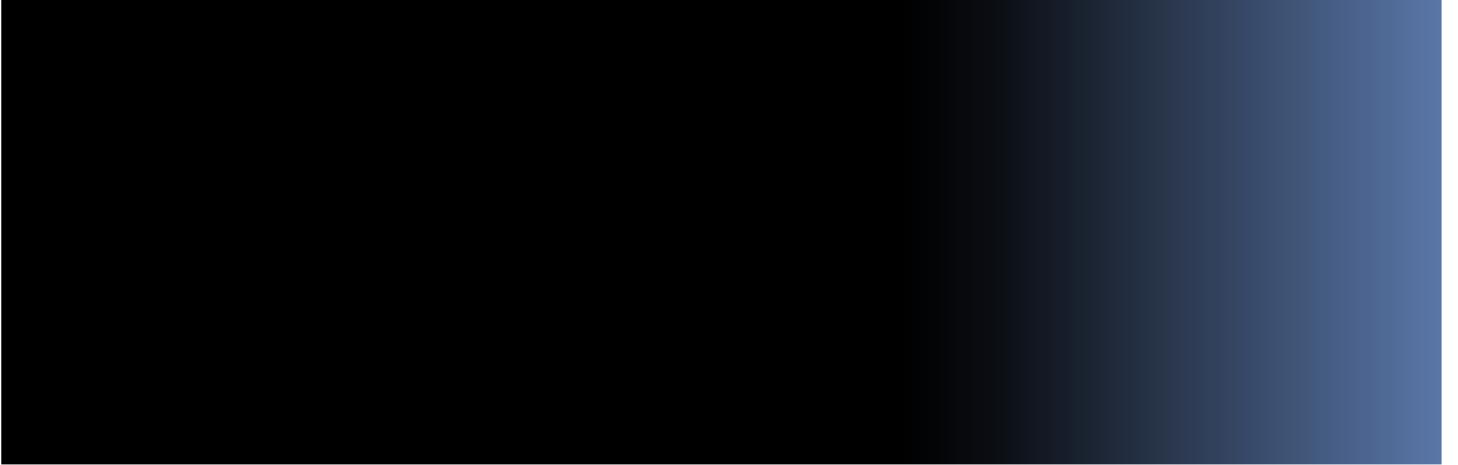
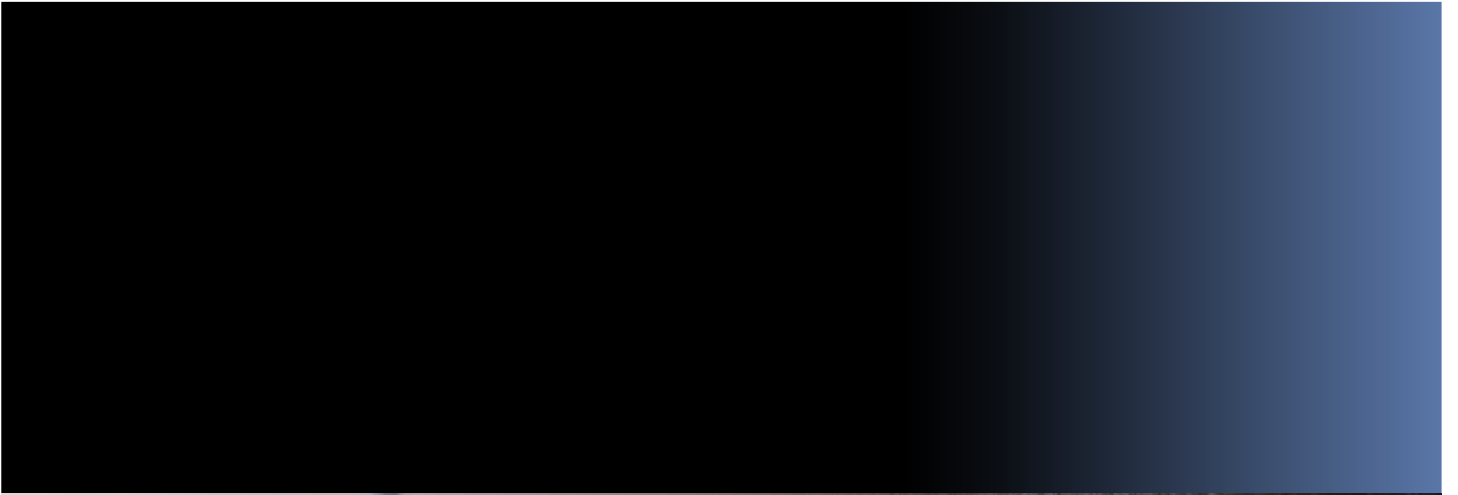
AFP

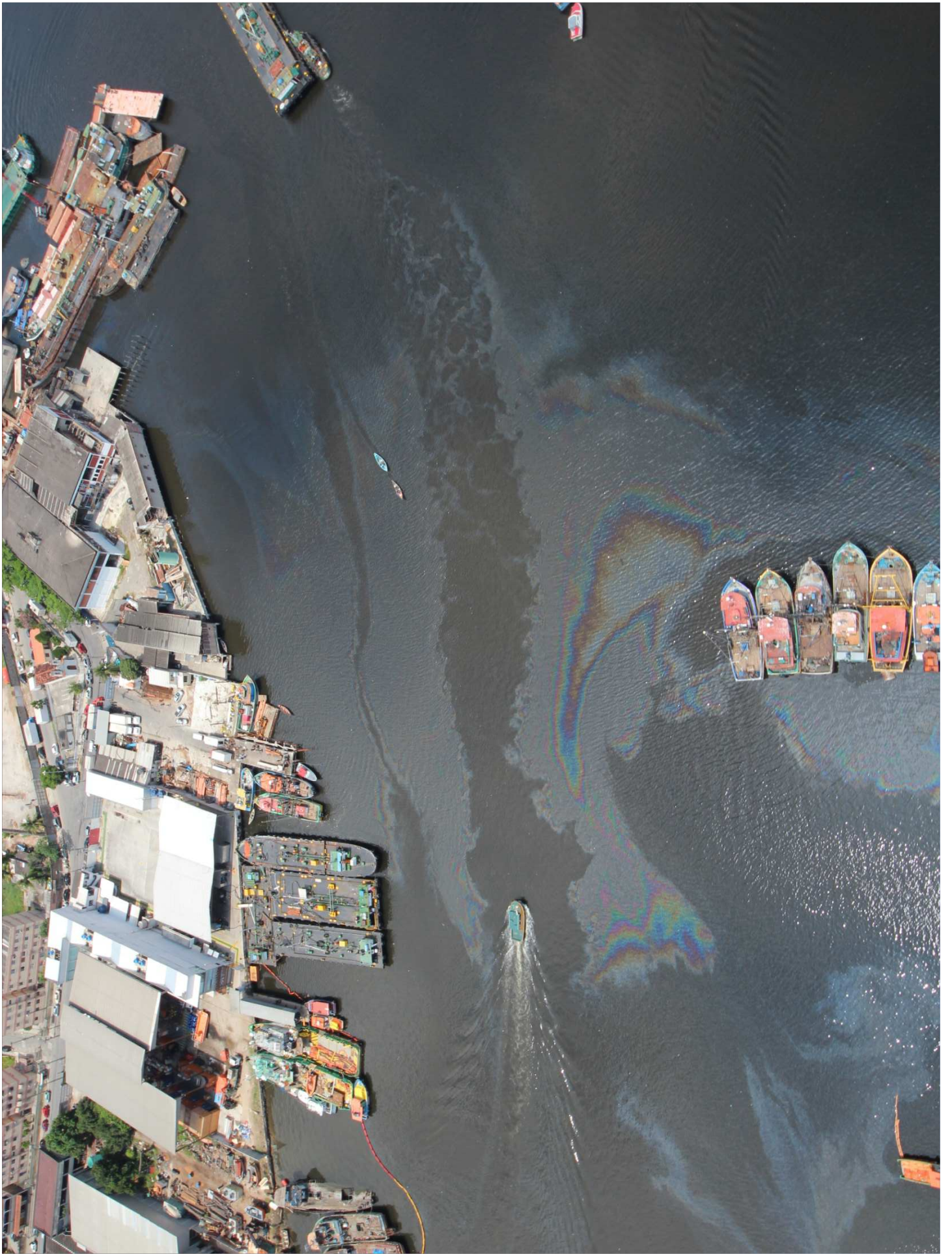
465785018





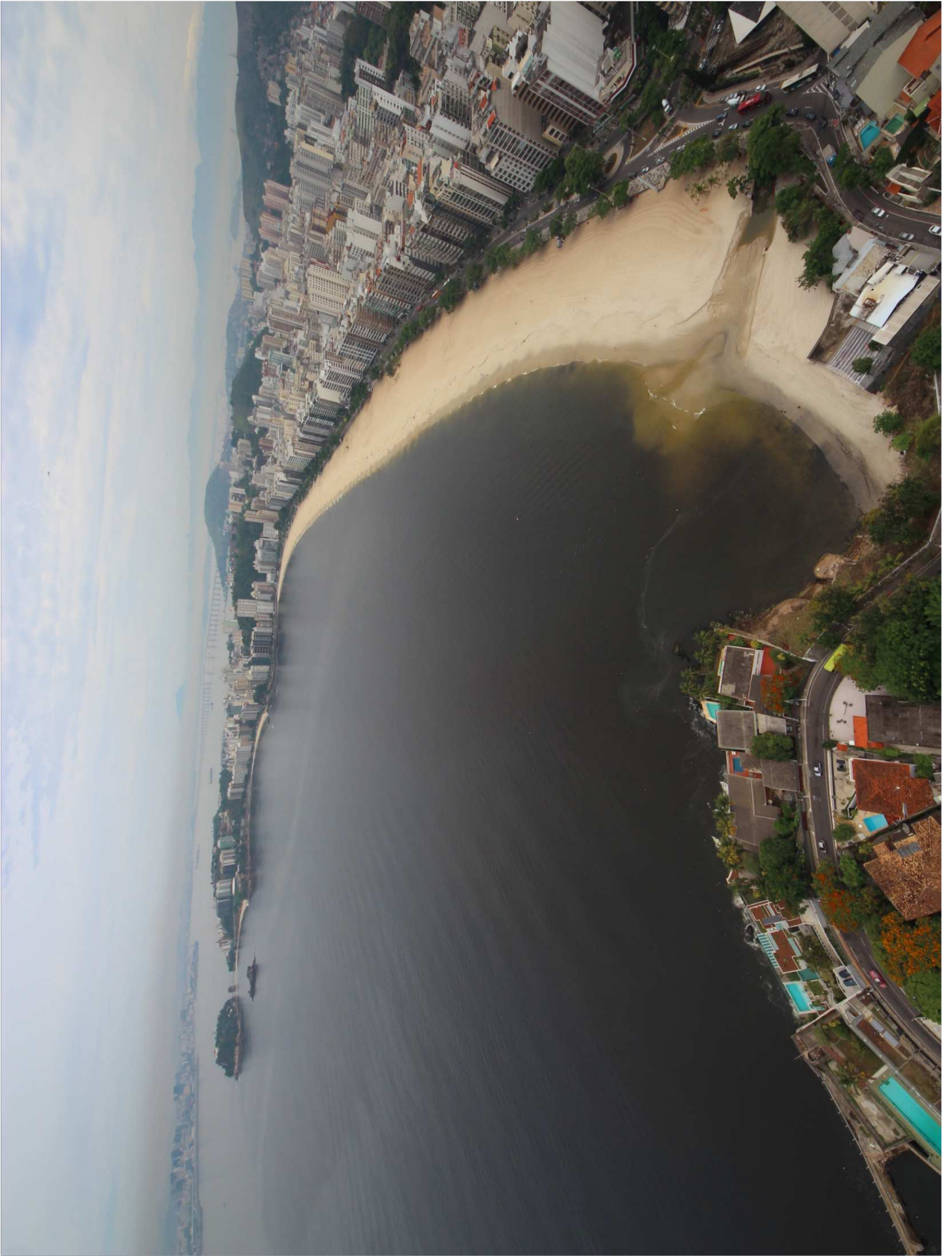


















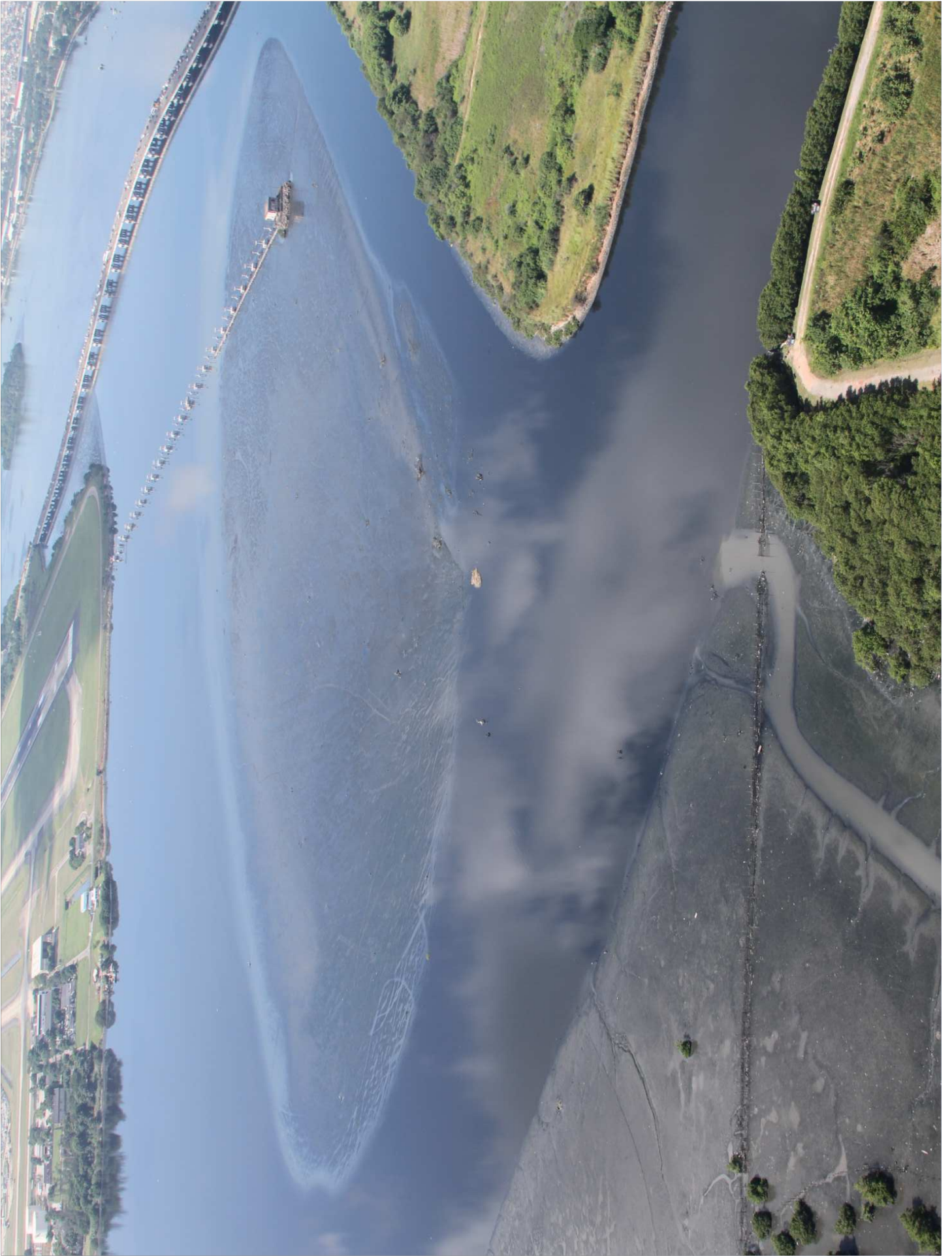


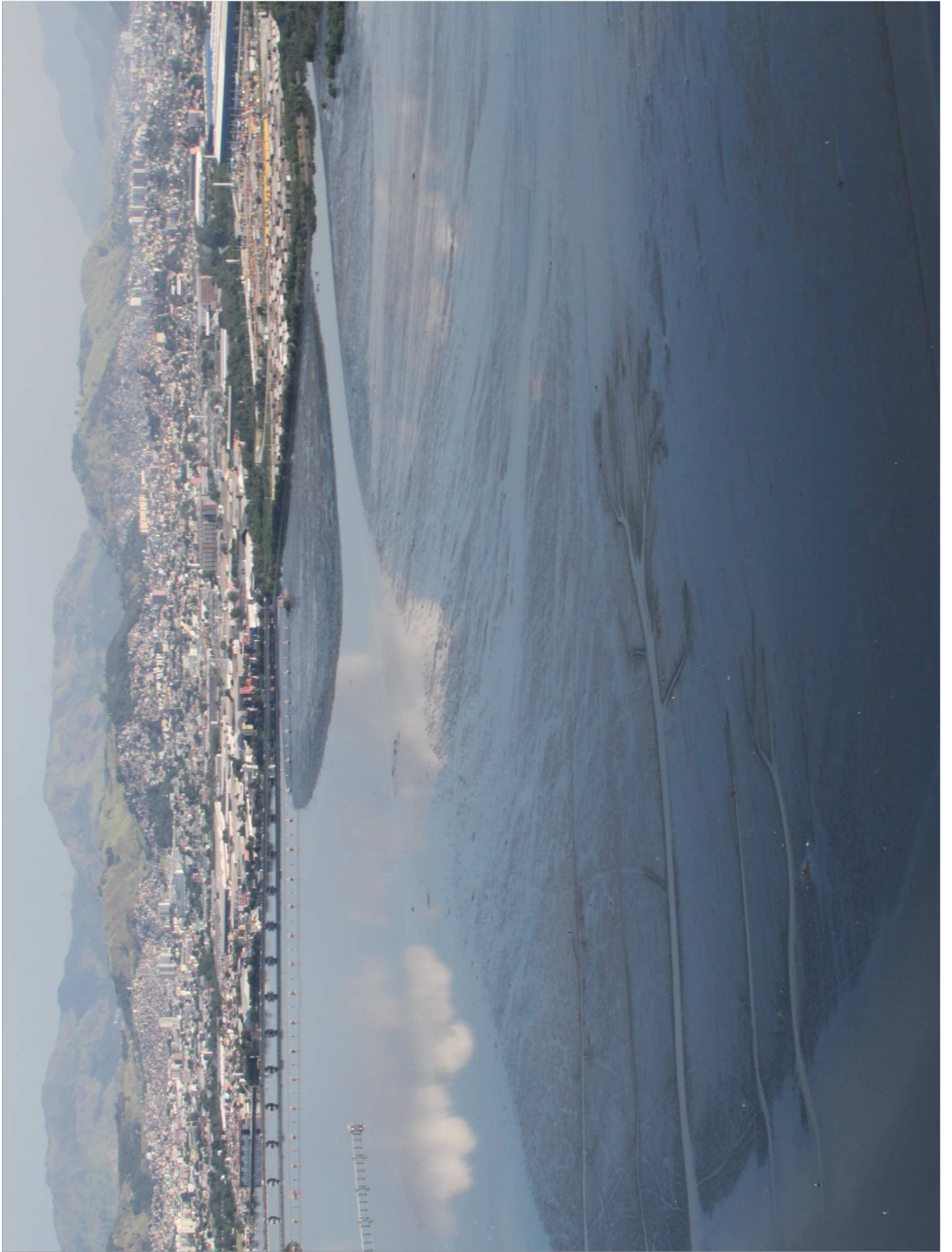


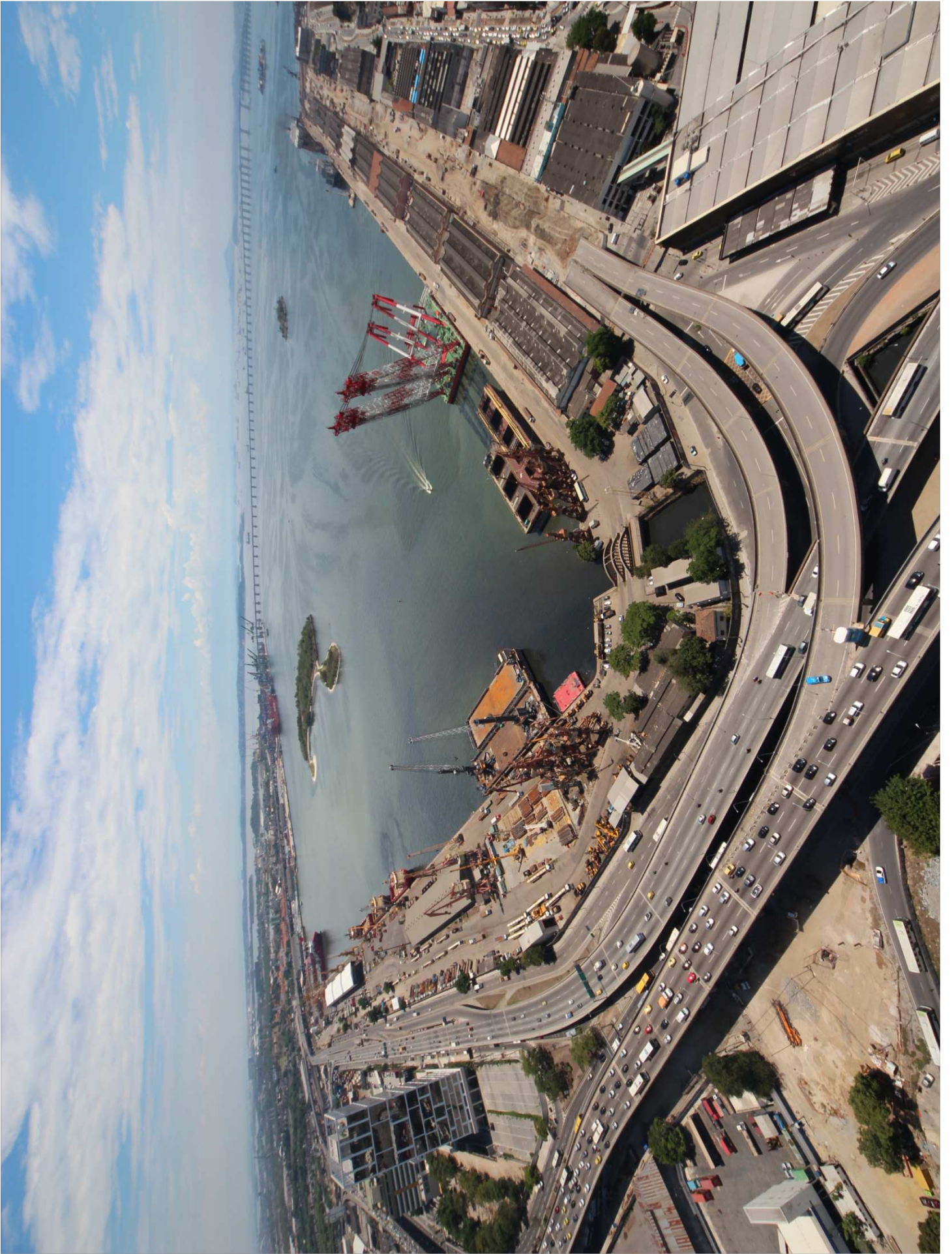


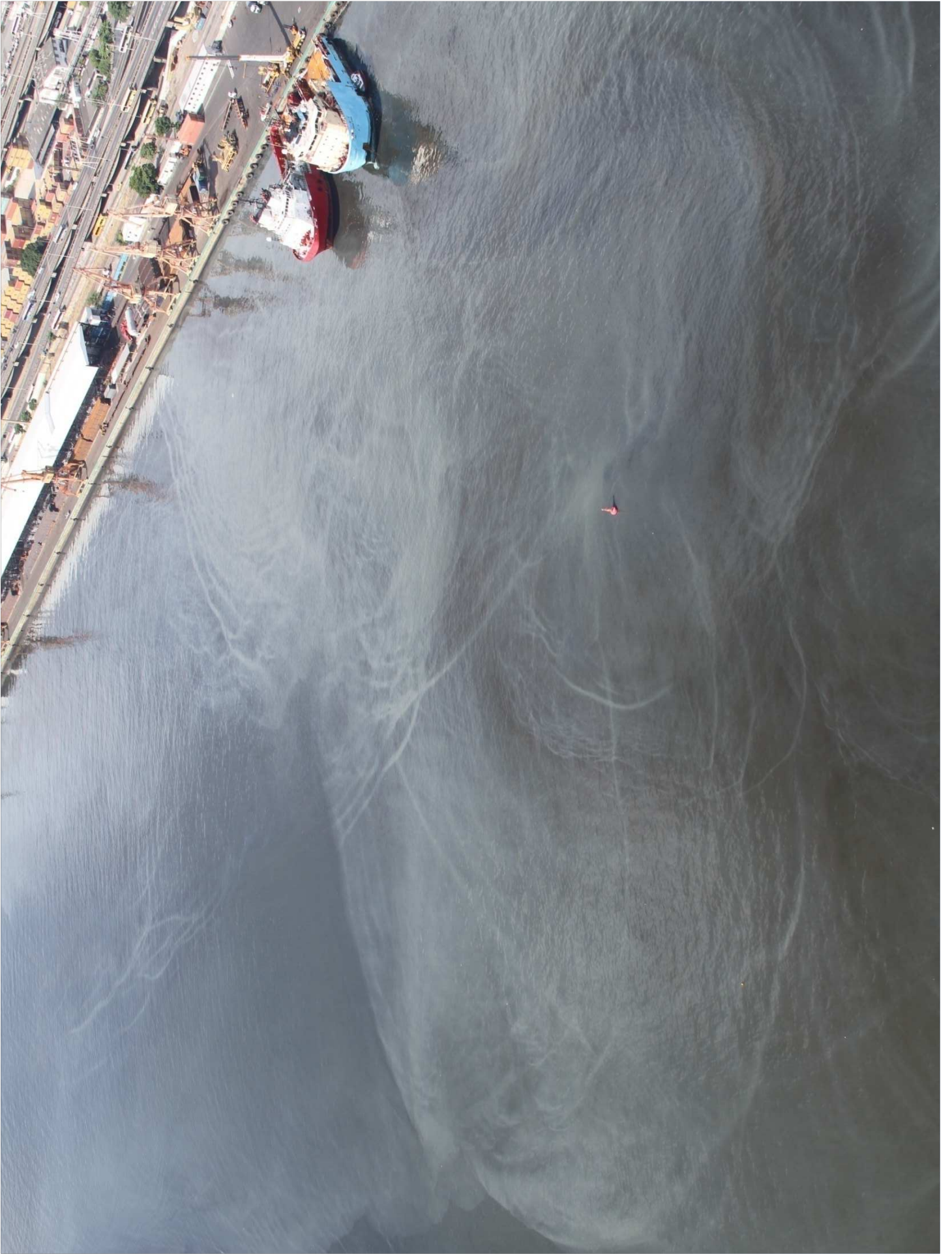


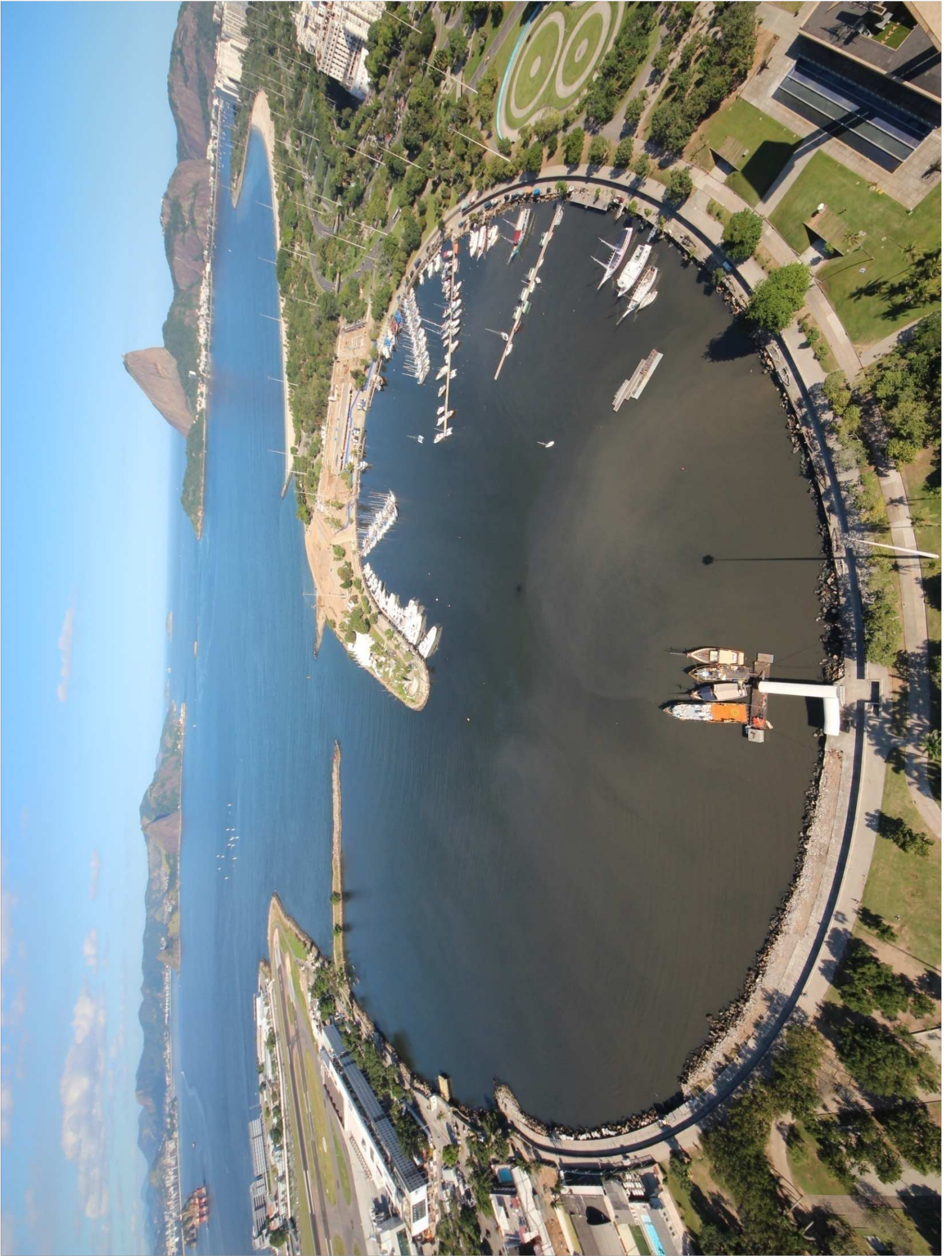


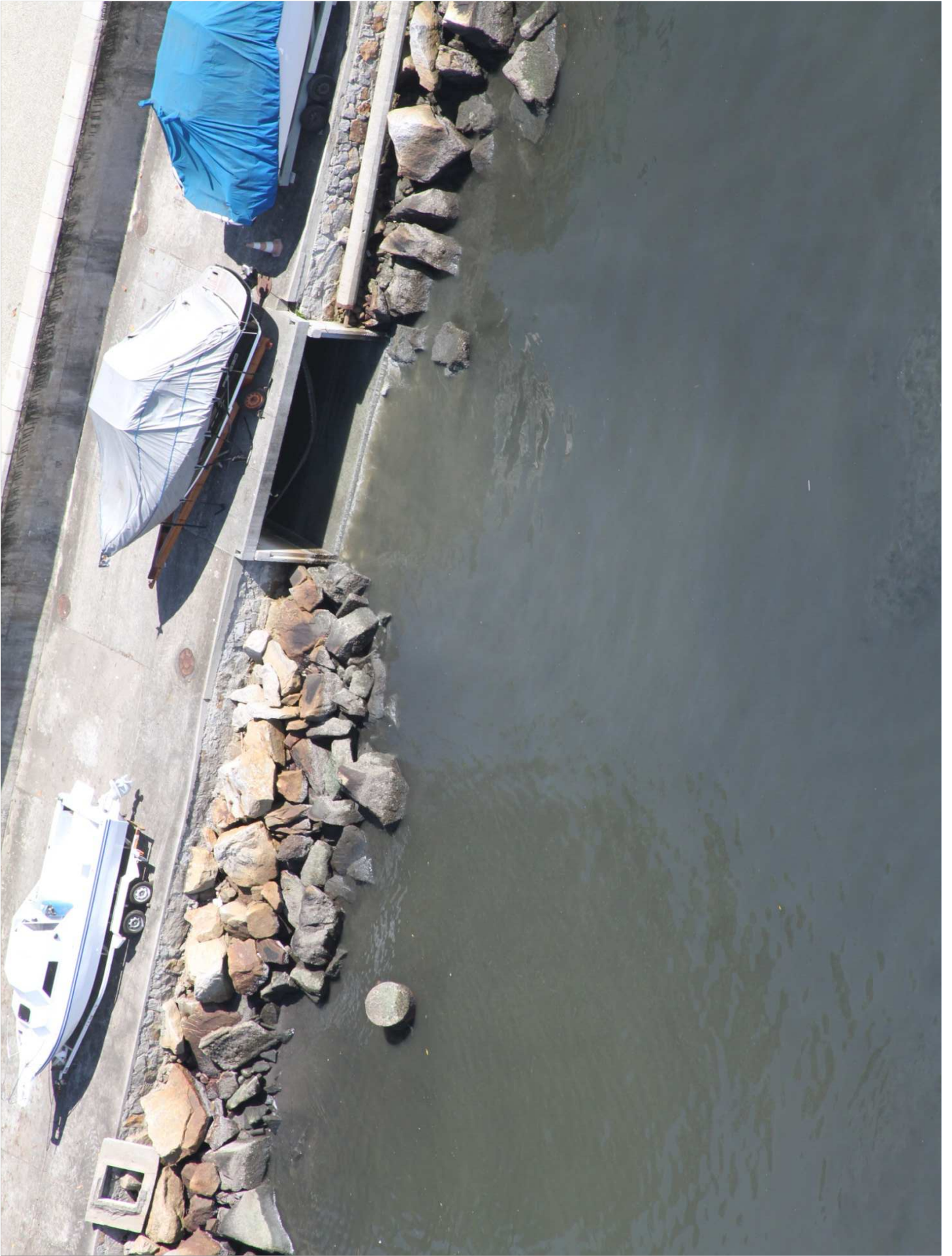


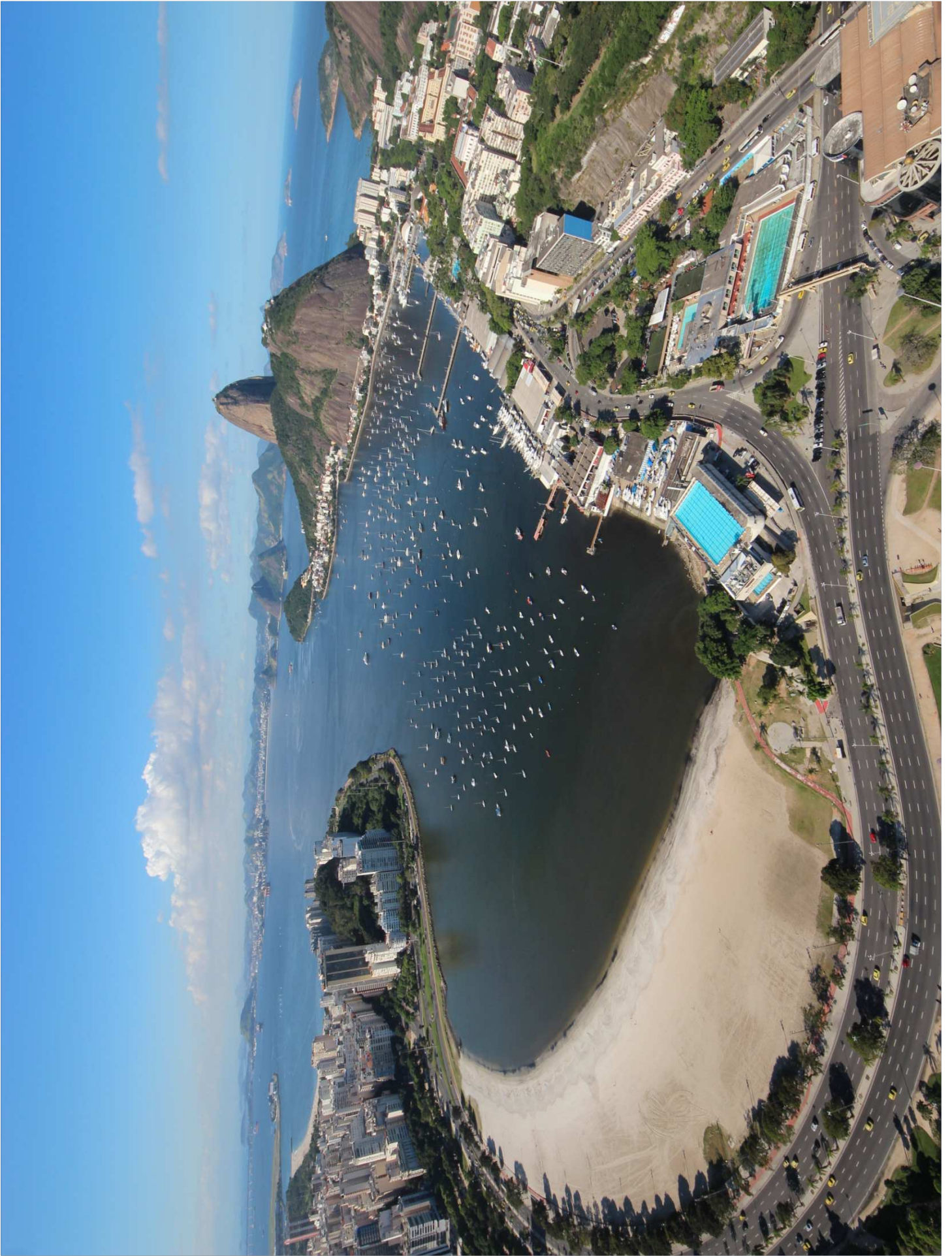




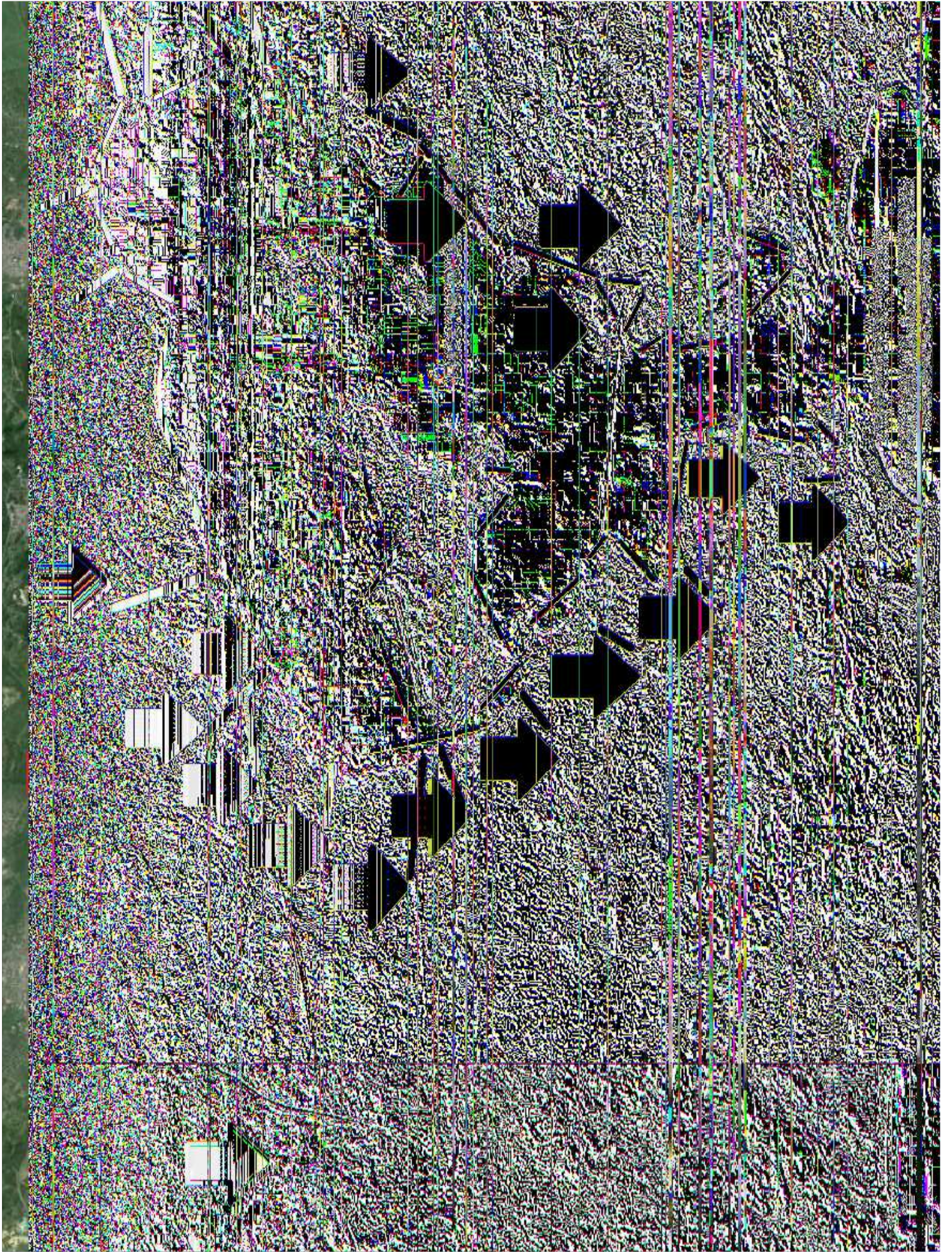
















A satellite image of the Baía de Guanabara region in Rio de Janeiro, Brazil. The bay is a large, dark, irregularly shaped body of water. The surrounding land is a mix of green forest and grey urban areas. Several diamond-shaped markers are overlaid on the map: a yellow diamond at the bottom center, a blue diamond on the right side, and several green diamonds scattered throughout the bay and surrounding land. A red location pin icon is placed above the text 'Baía de Guanabara'.

Baía de Guanabara

Image © 2015 DigitalGlobe
Image © 2015 CNES / Astrium

Data SIO, NOAA, U.S. Navy, NGA, GEBCO

