



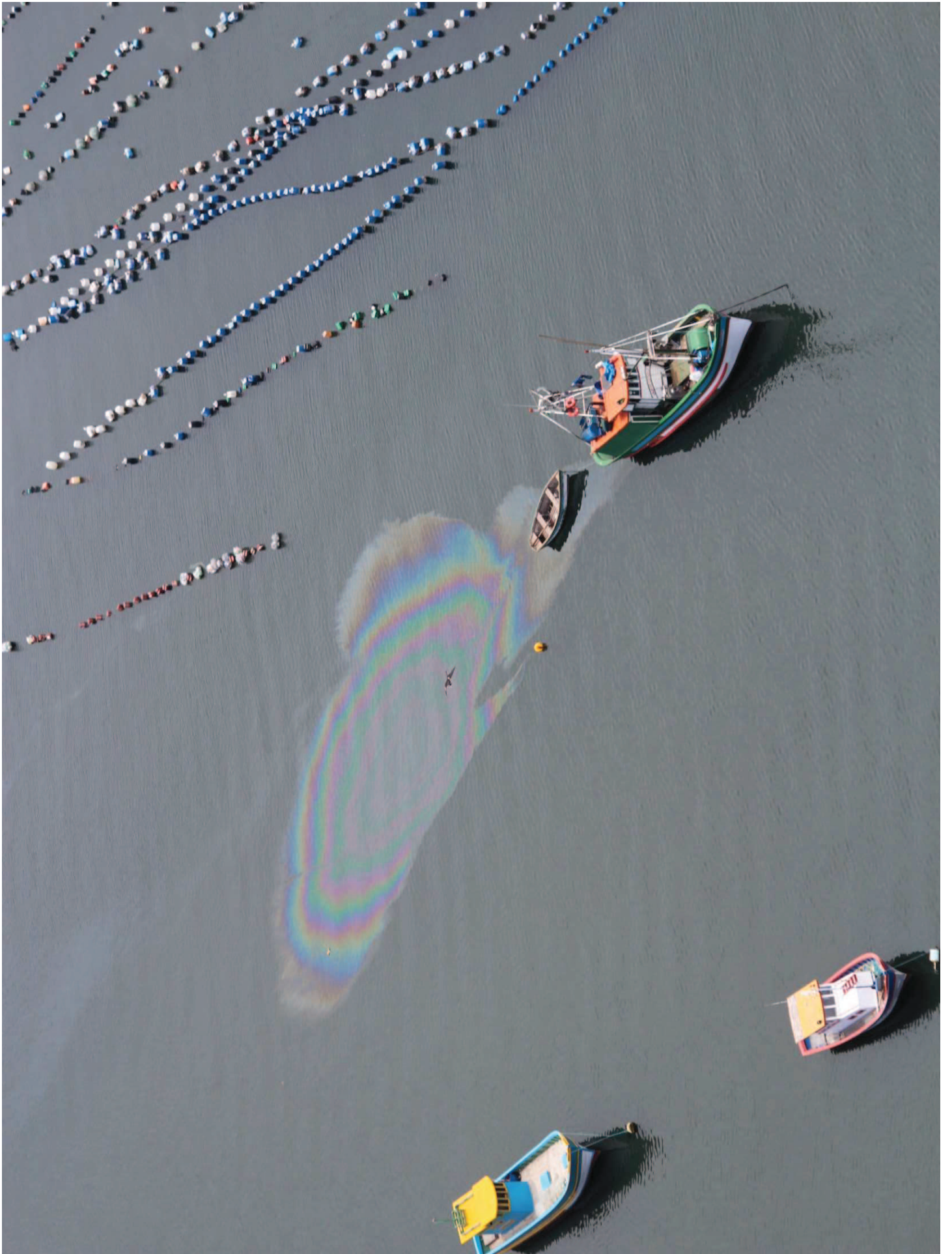


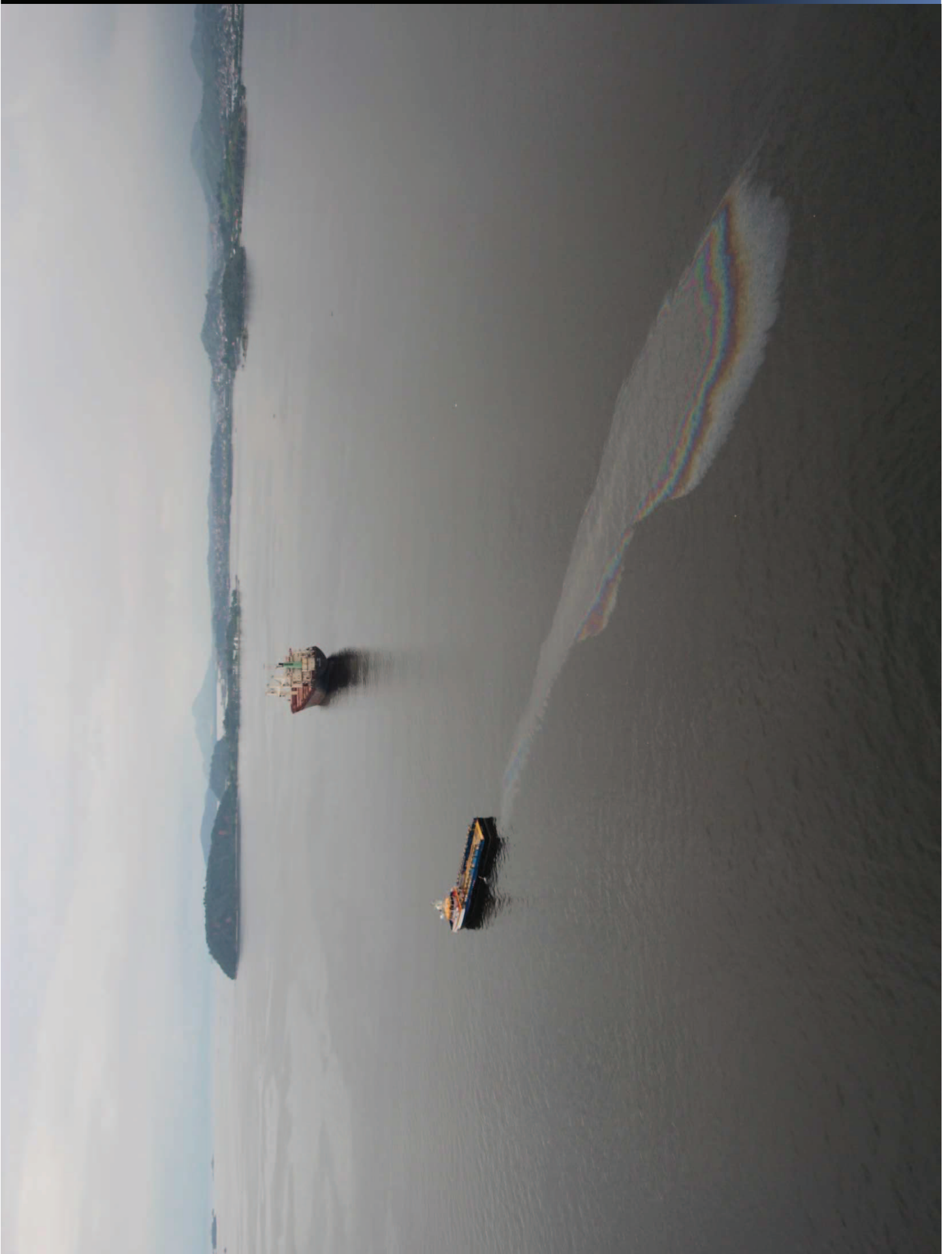
gettyimages

AFP

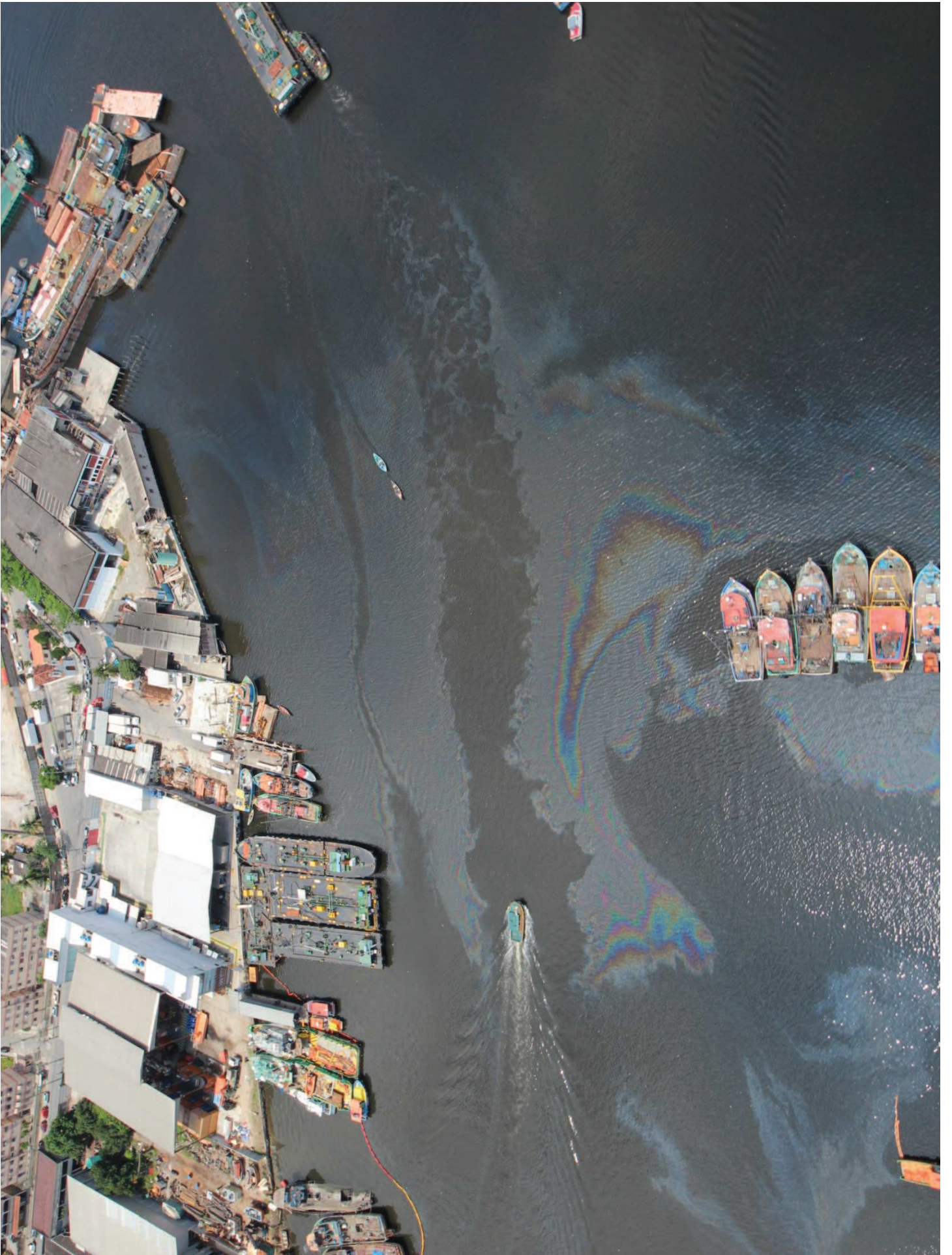
465785018























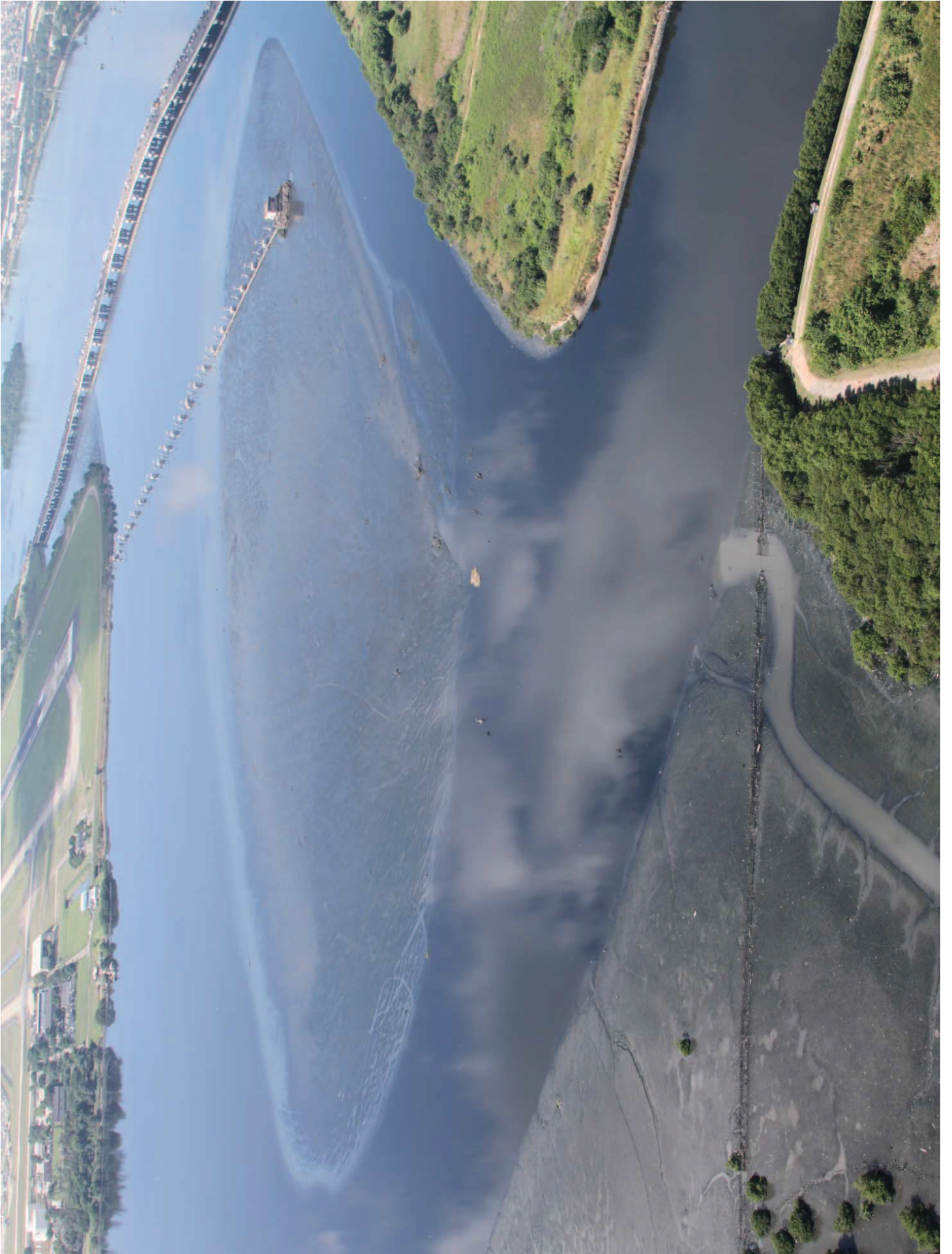


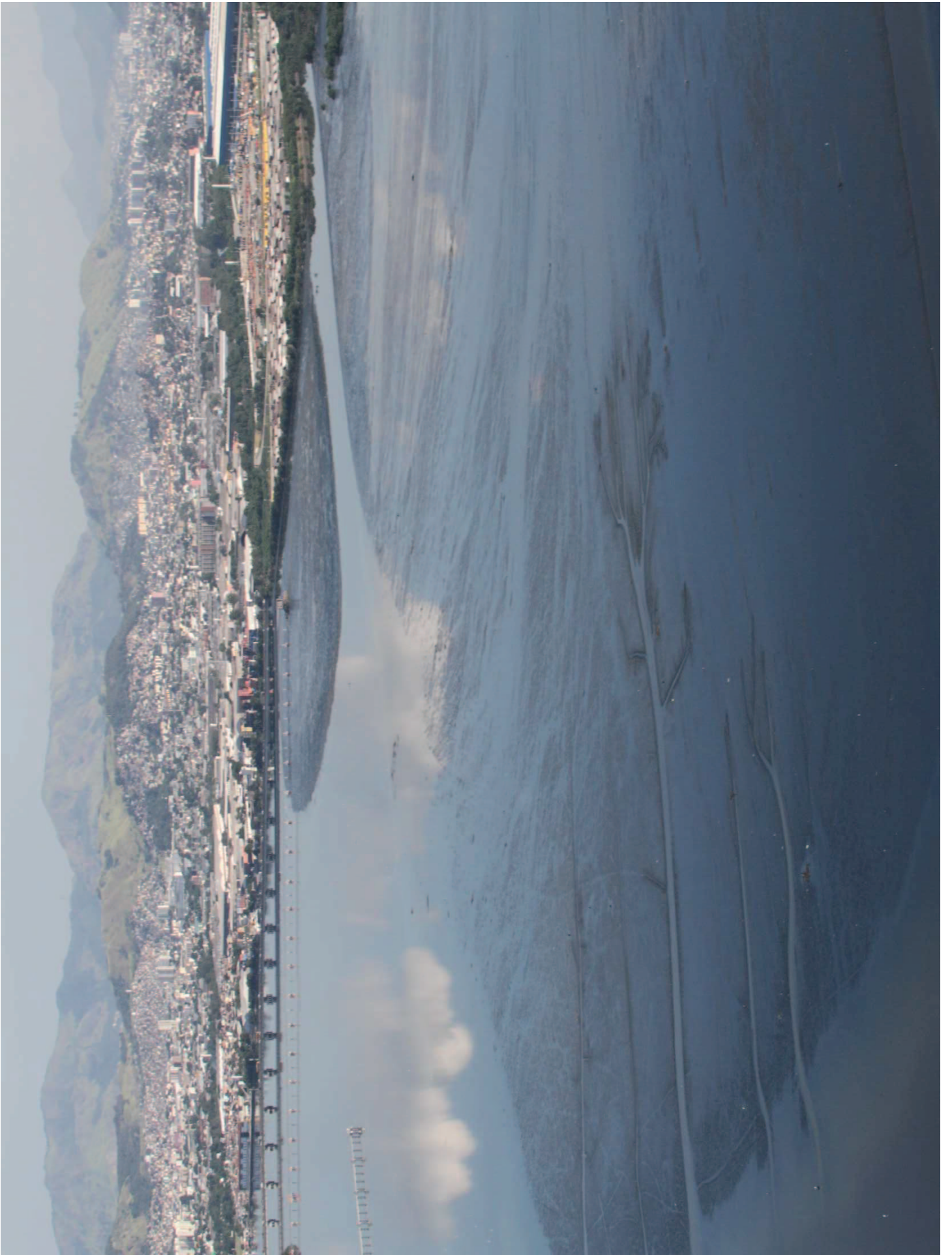


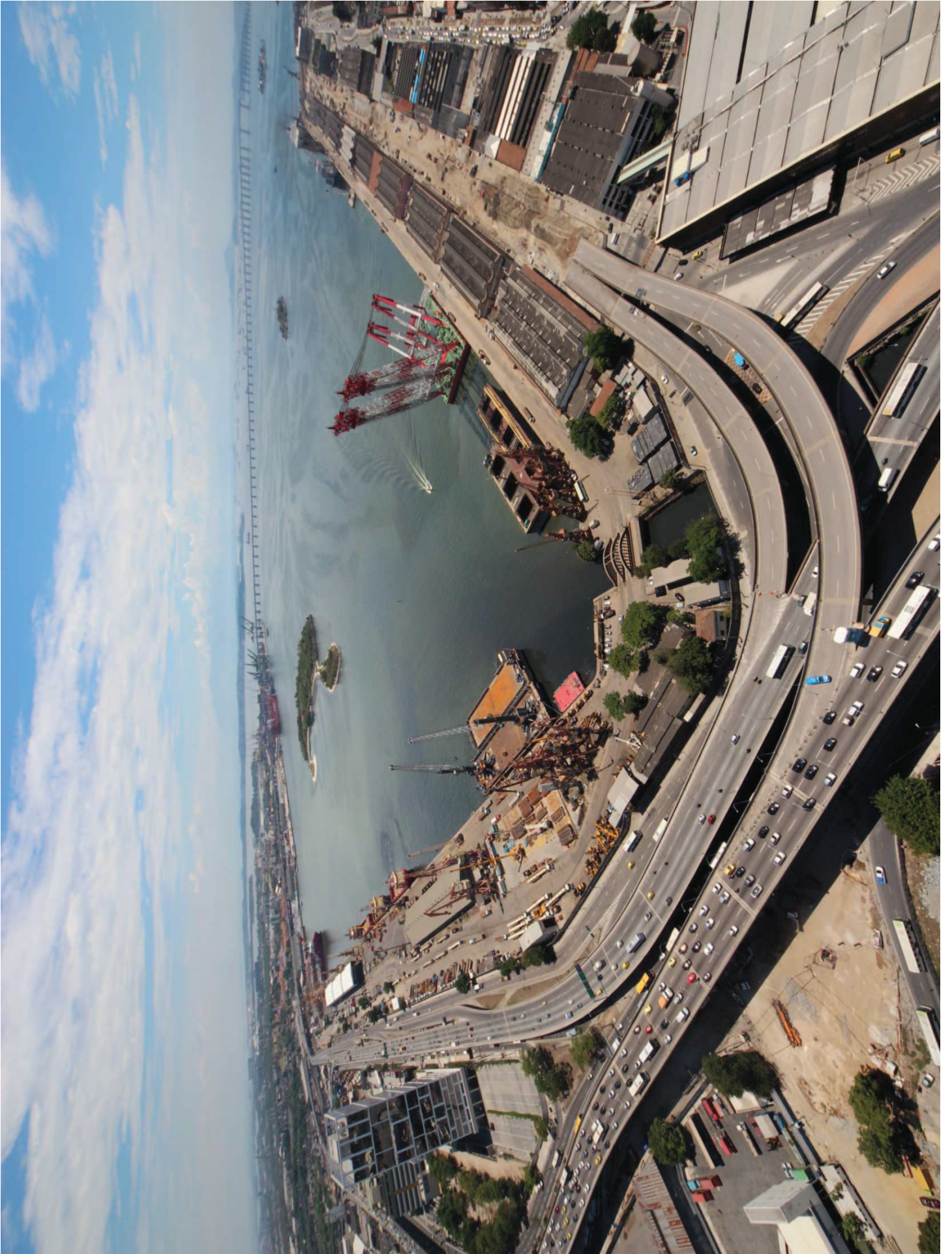


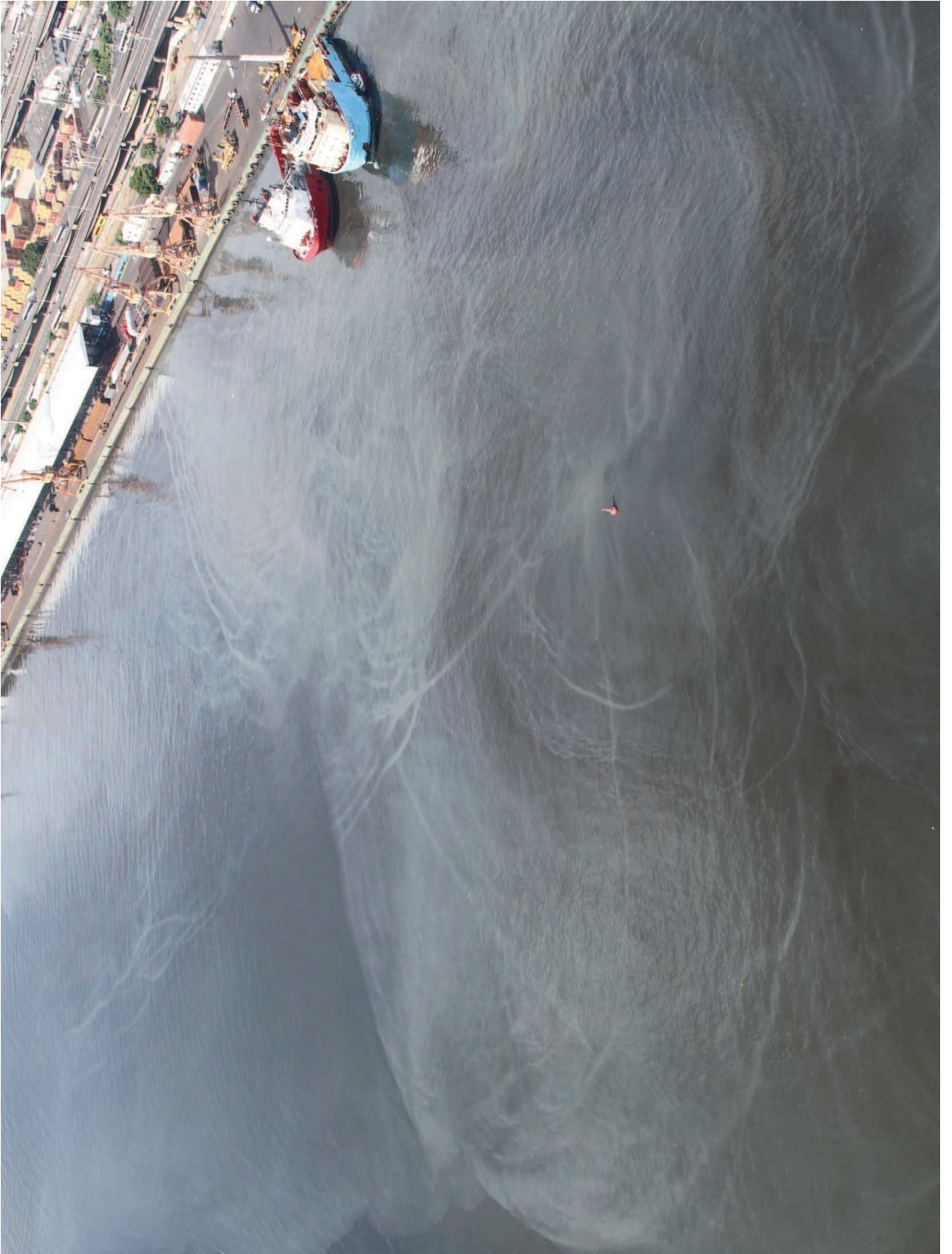




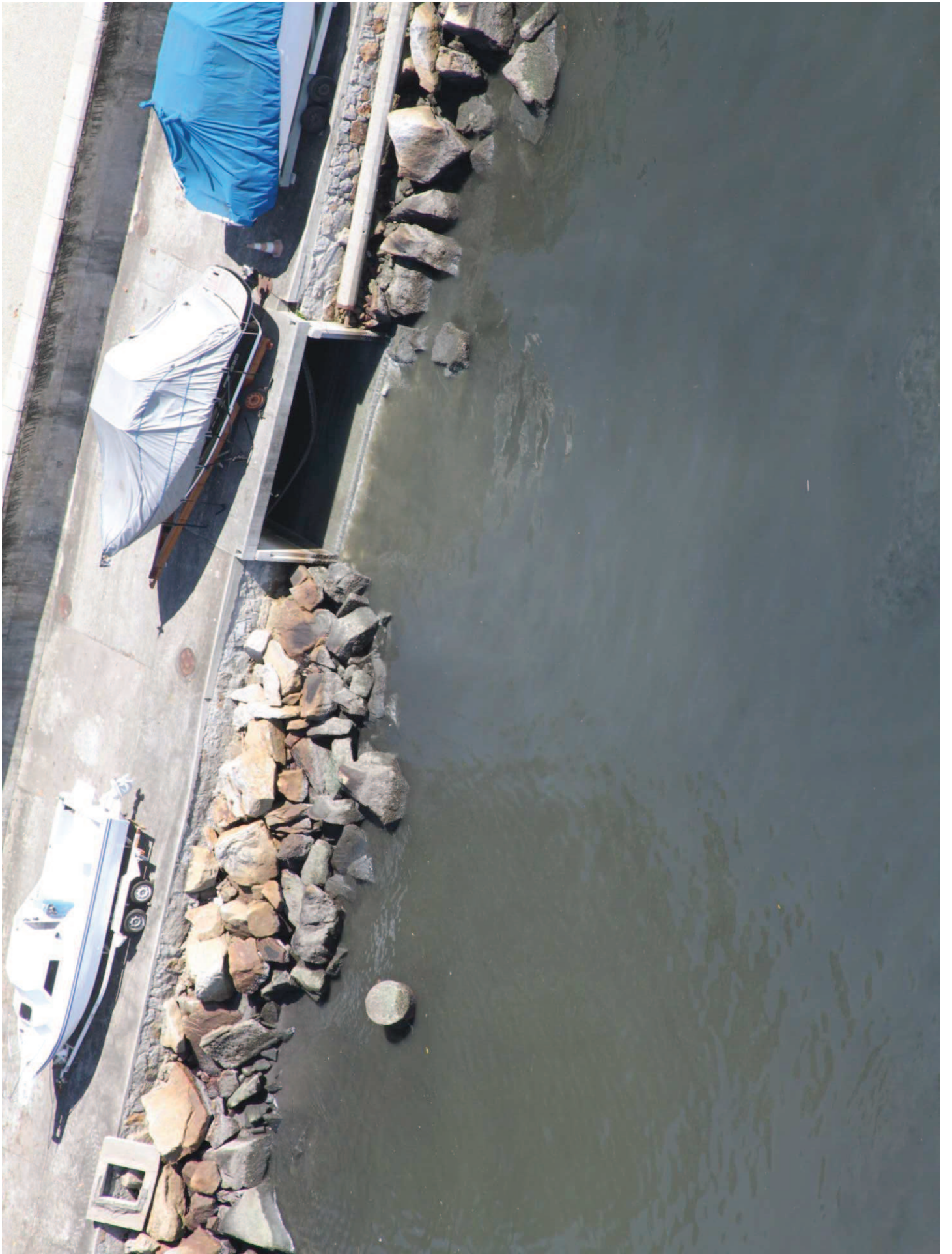






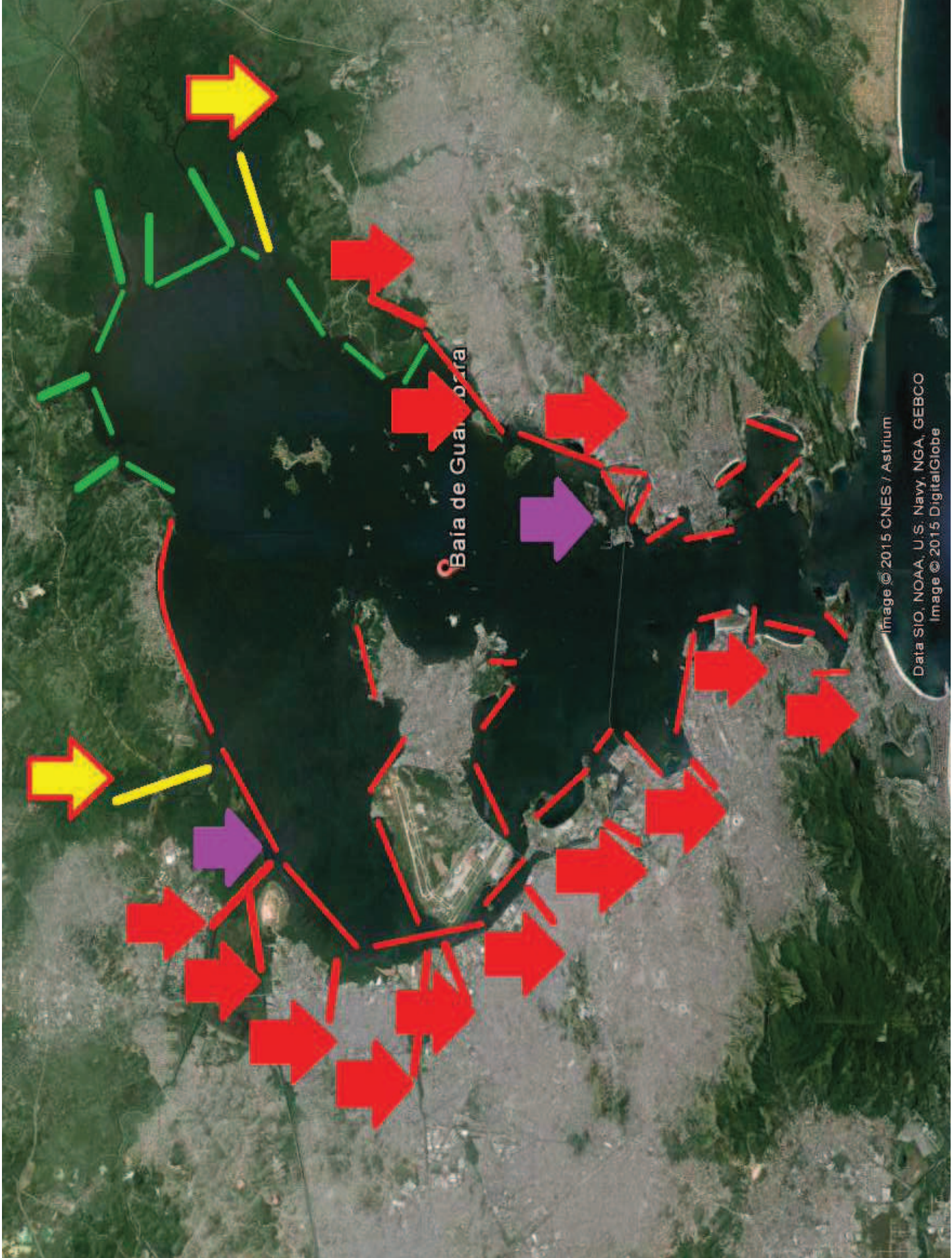












Baía de Guarapiranga

Image © 2015 CNES / Astrium
Data SIO, NOAA, U.S. Navy, NGA, GEBCO
Image © 2015 DigitalGlobe



A satellite-style map of Guanabara Bay in Rio de Janeiro, Brazil. The bay is a large, dark, irregularly shaped body of water. The surrounding land is a mix of green vegetation and grey urban areas. Several colored diamond markers are placed around the bay: a yellow diamond at the southern tip, a blue diamond on the eastern shore, and several green diamonds scattered along the northern and western shores. A red location pin icon is positioned above the text 'Baía de Guanabara'.

Baía de Guanabara

Image © 2015 DigitalGlobe
Image © 2015 CNES / Astrium

Data: SIO, NOAA, U.S. Navy, NGA, GEBCO

