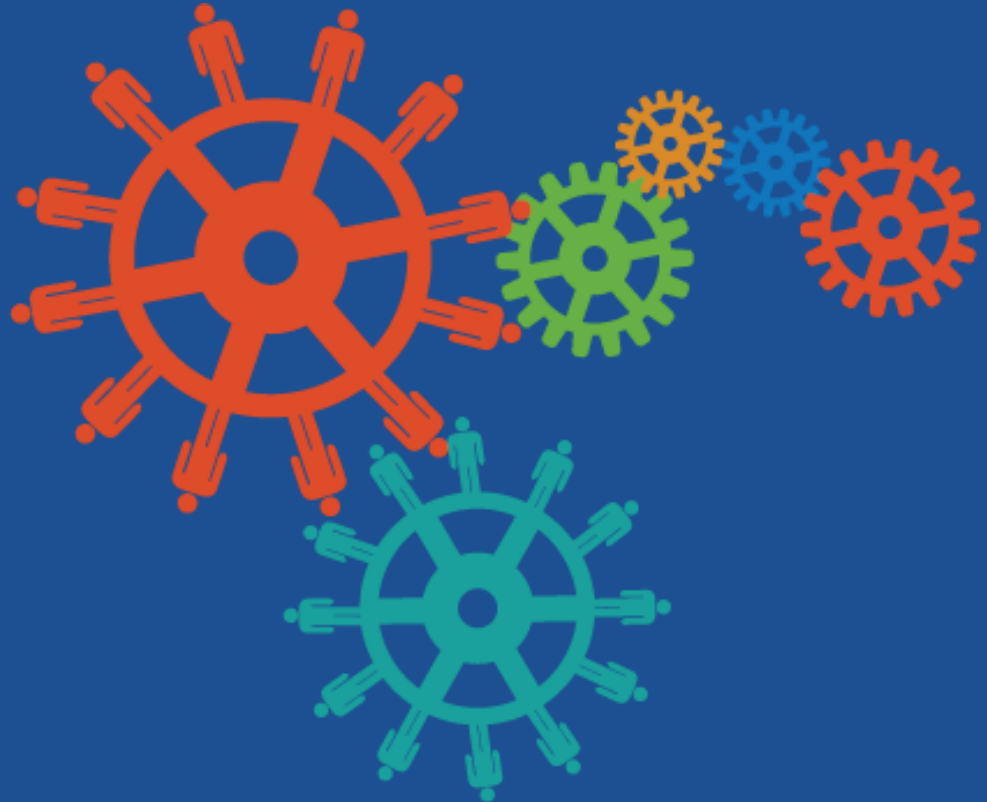


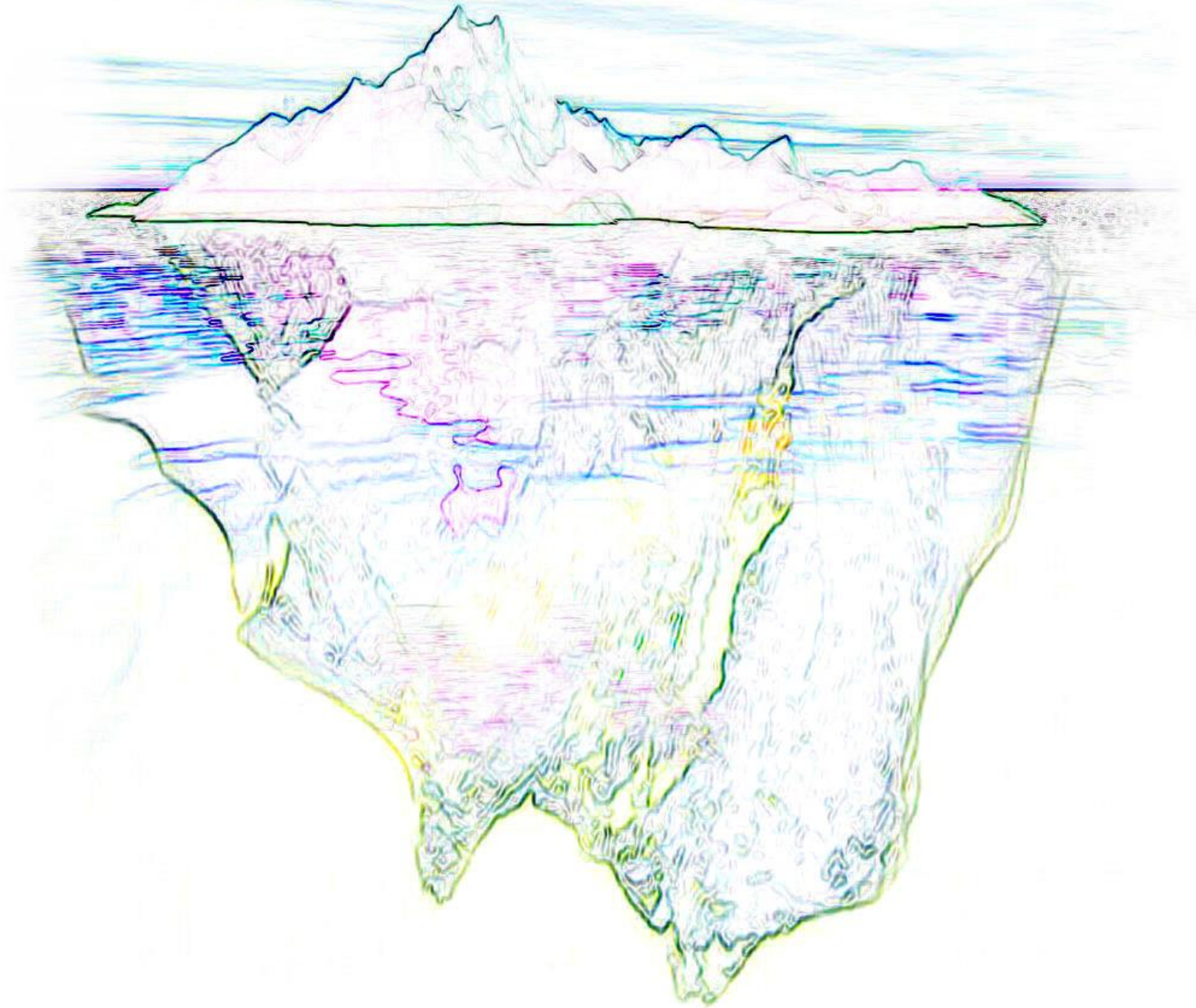


At the Heart of Learning

Six Seconds is a global nonprofit
supporting people to create
positive change -

Everywhere.
All the time.





Why?

Why is emotional intelligence
important in education?



Three Wishes



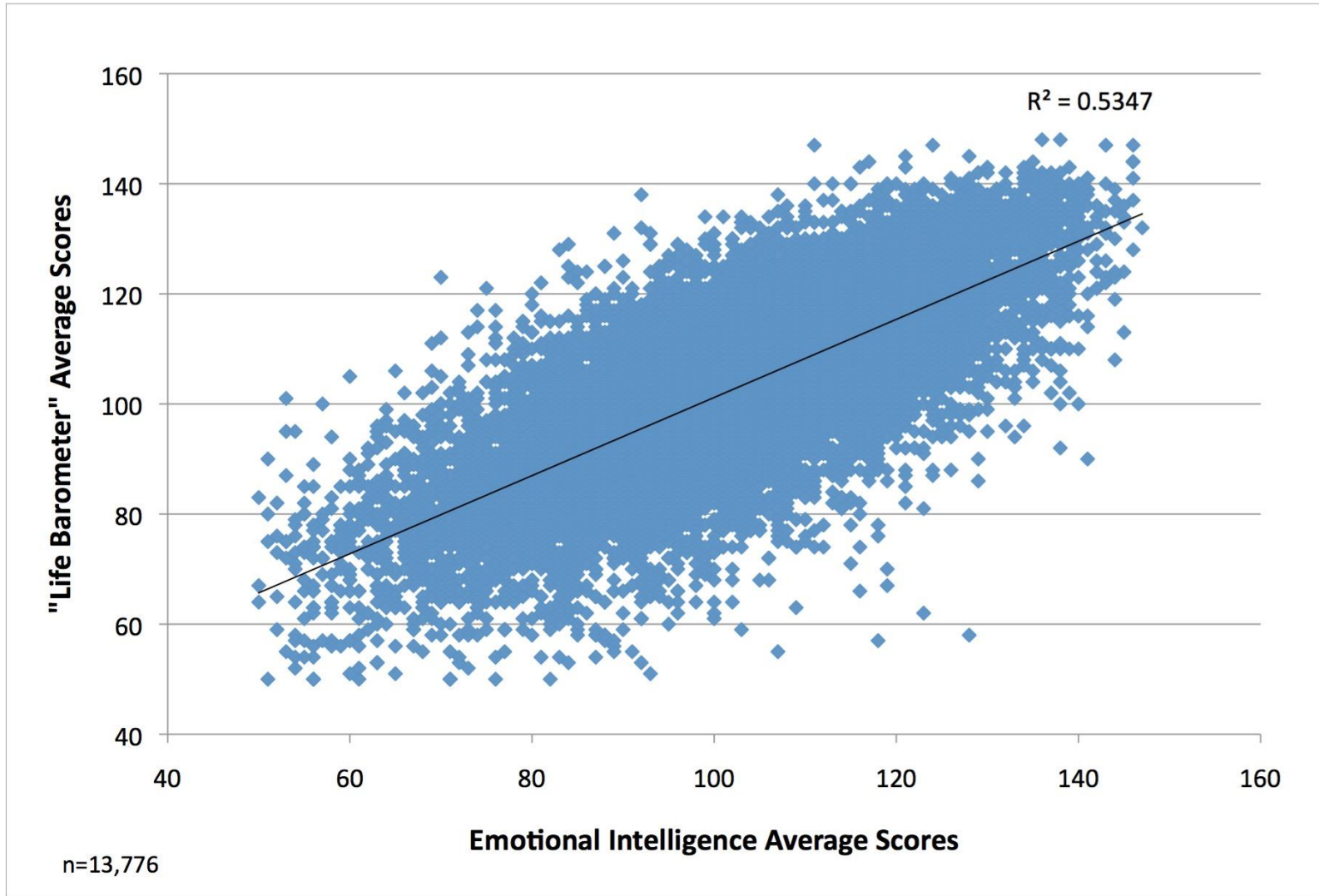
Where is success?



EQ Builds Student Success



Achievement. Efficacy. Satisfaction.
Health. Relationships.



6seconds.org/case



- Higher grade point averages
- Higher academic achievement scores
- Better school attendance
- Increased acceptance among peers

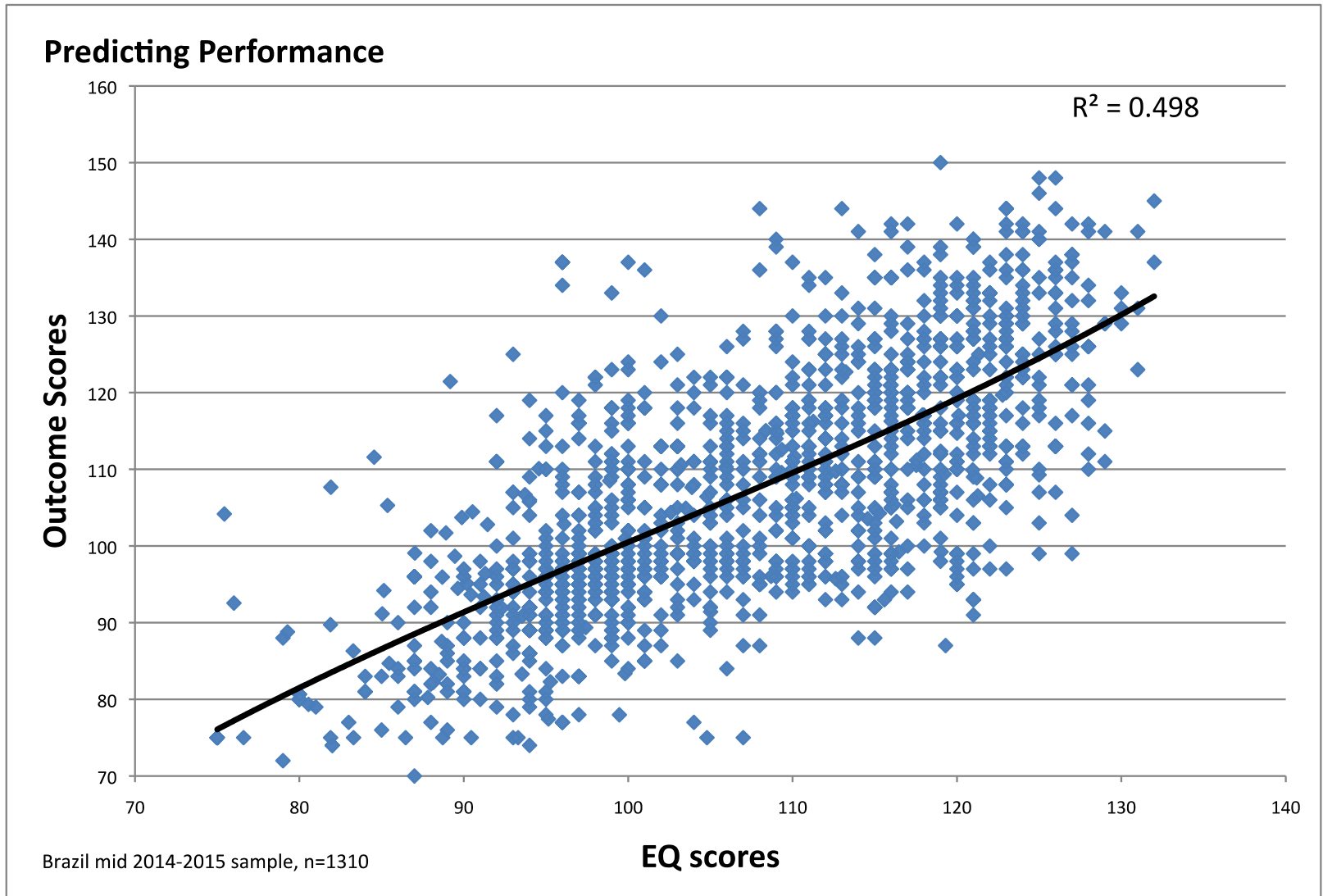
- Decreased antisocial behavior and aggression
- Fewer serious discipline problems and school suspensions
- Less alcohol, drug, tobacco use

Meta Analysis of 379 SEL programs -- Durlak & Weissberg, R.P. (2005) as cited in Cherniss, C., Extein, M., Goleman, D., Weissberg, R.P. (2006). Emotional intelligence: What does the research really indicate? *Educational Psychologist*, 41 (4), 239-245

Brazil Sample



Quality of Life. Health. Relationships.
Effectiveness. Influence. Decision Making.



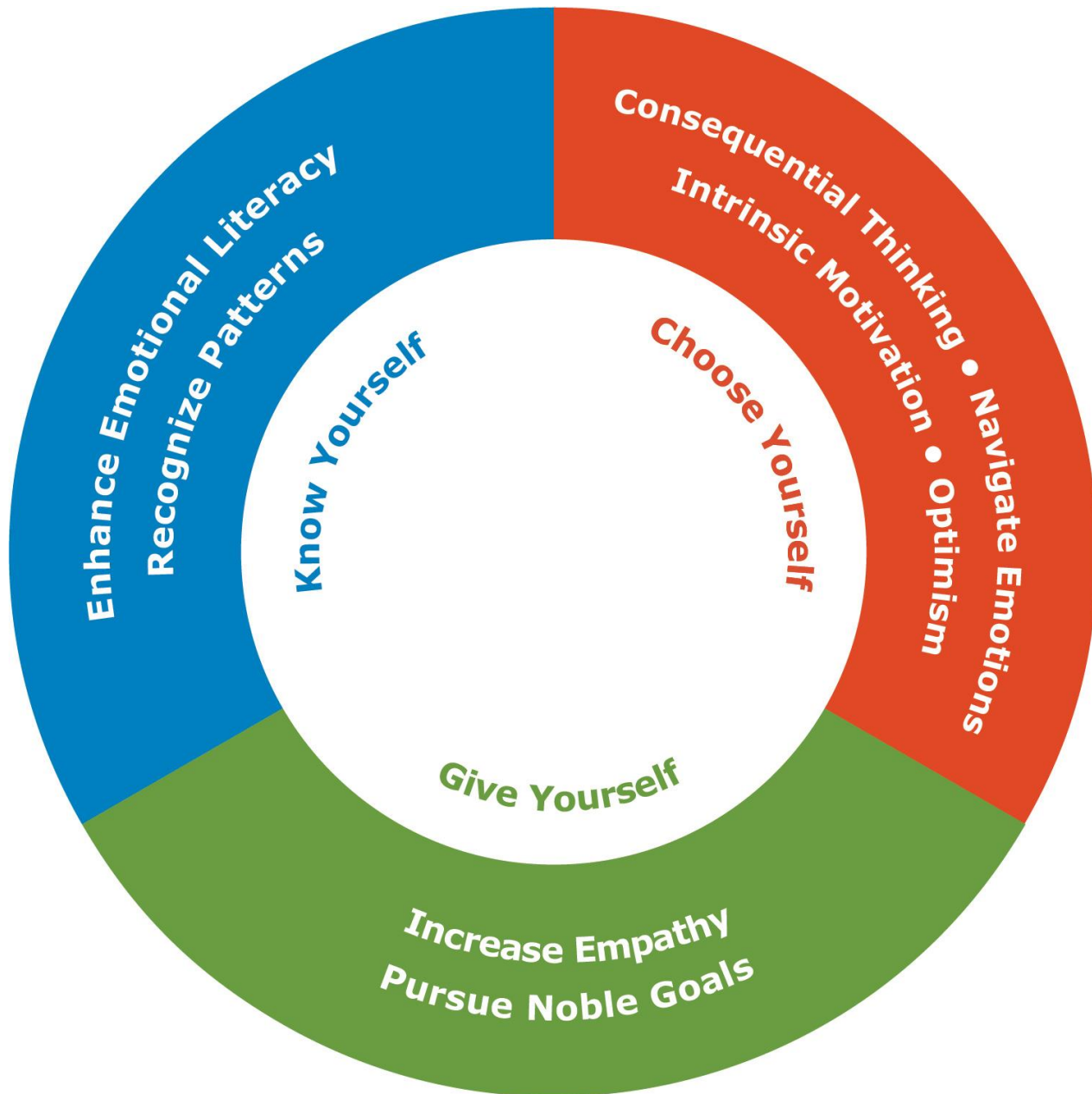
What?

What is social emotional learning?



Be smarter with feelings.





“Self-Scientist”



“The most exciting phrase to hear in science, the one that heralds new discoveries, is not ‘Eureka!’ (‘I found it!’) but rather ‘hmm.... that's funny...’”
-- Isaac Asimov



How?

How can schools develop
emotional intelligence?



Imaginary School: Moon Academy

Comprehensive Approach



School Community

Context for learning

Teachers

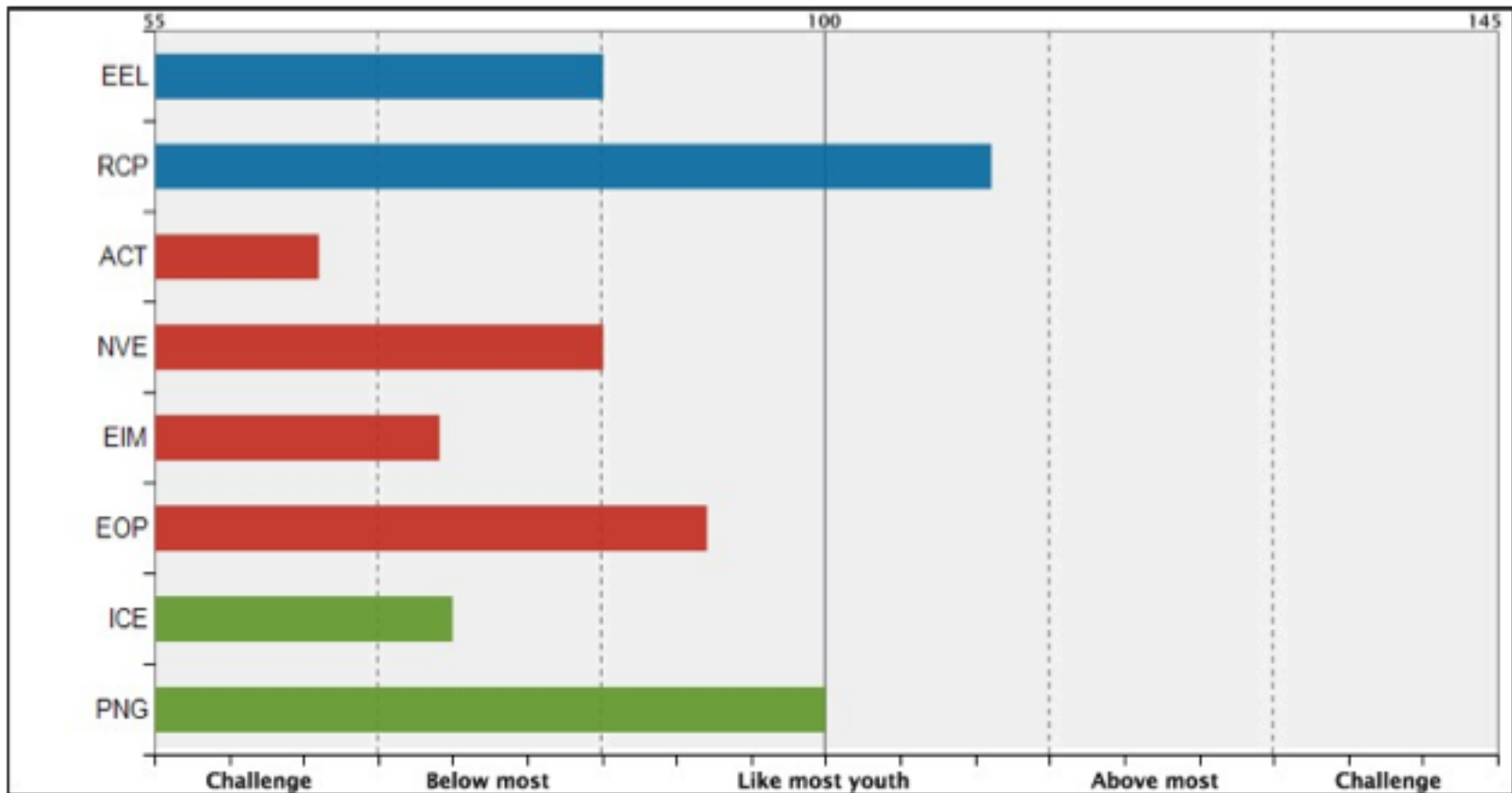
Role models

Students

Skills for life



Dexter – Age 8



EEL – Enhance Emotional Literacy

NVE– Navigate Emotions

ICE–Increase Empathy

RCP – Recognize Patterns

EIM–Enhance Intrinsic Motivation

PNG–Pursue Noble Goals

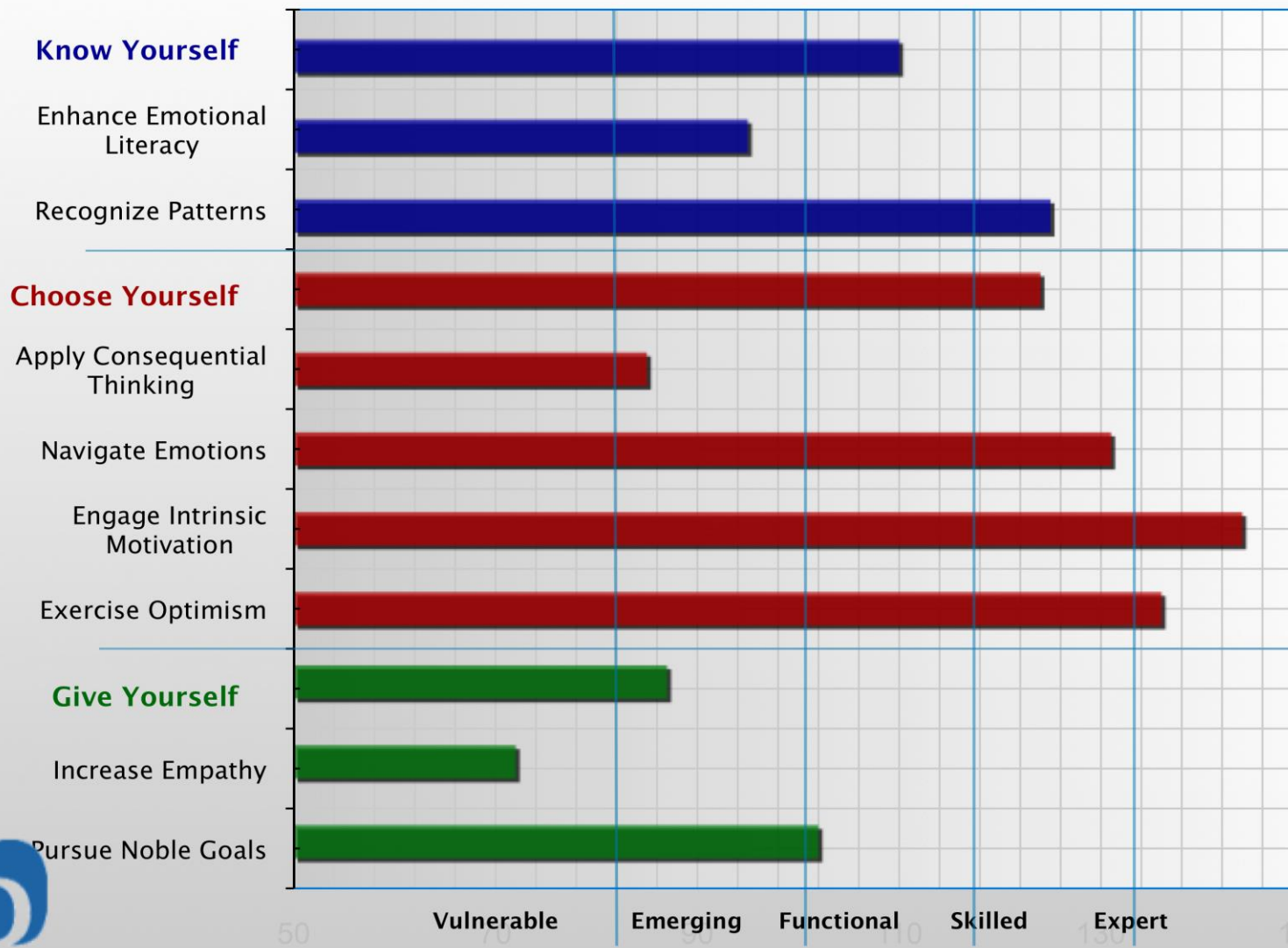
ACT–Apply Consequential Thinking

EOP–Exercise Optimism

Case: Dexter's Teacher



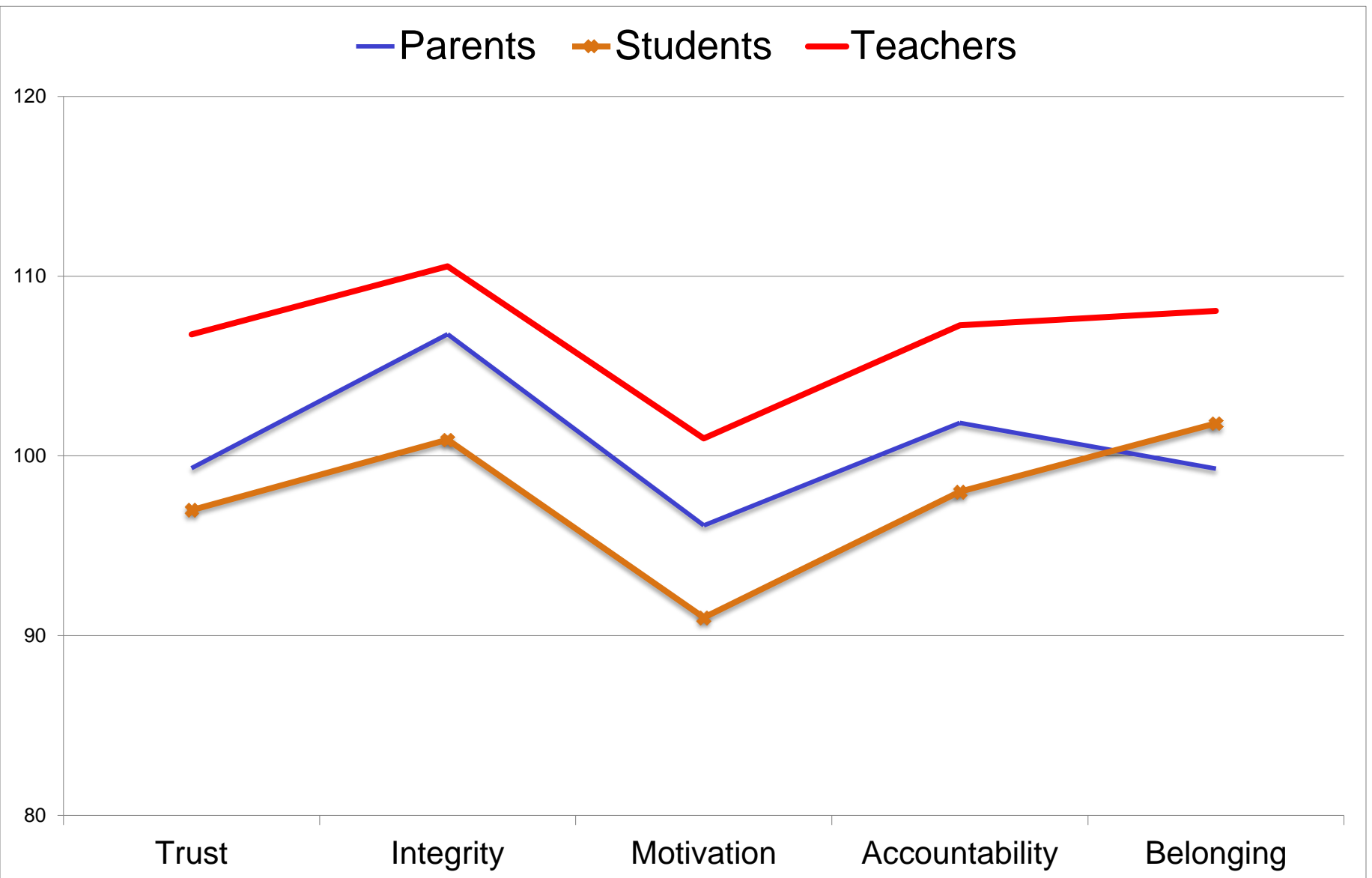
Rick Jones





What are the ingredients of a great place to learn?

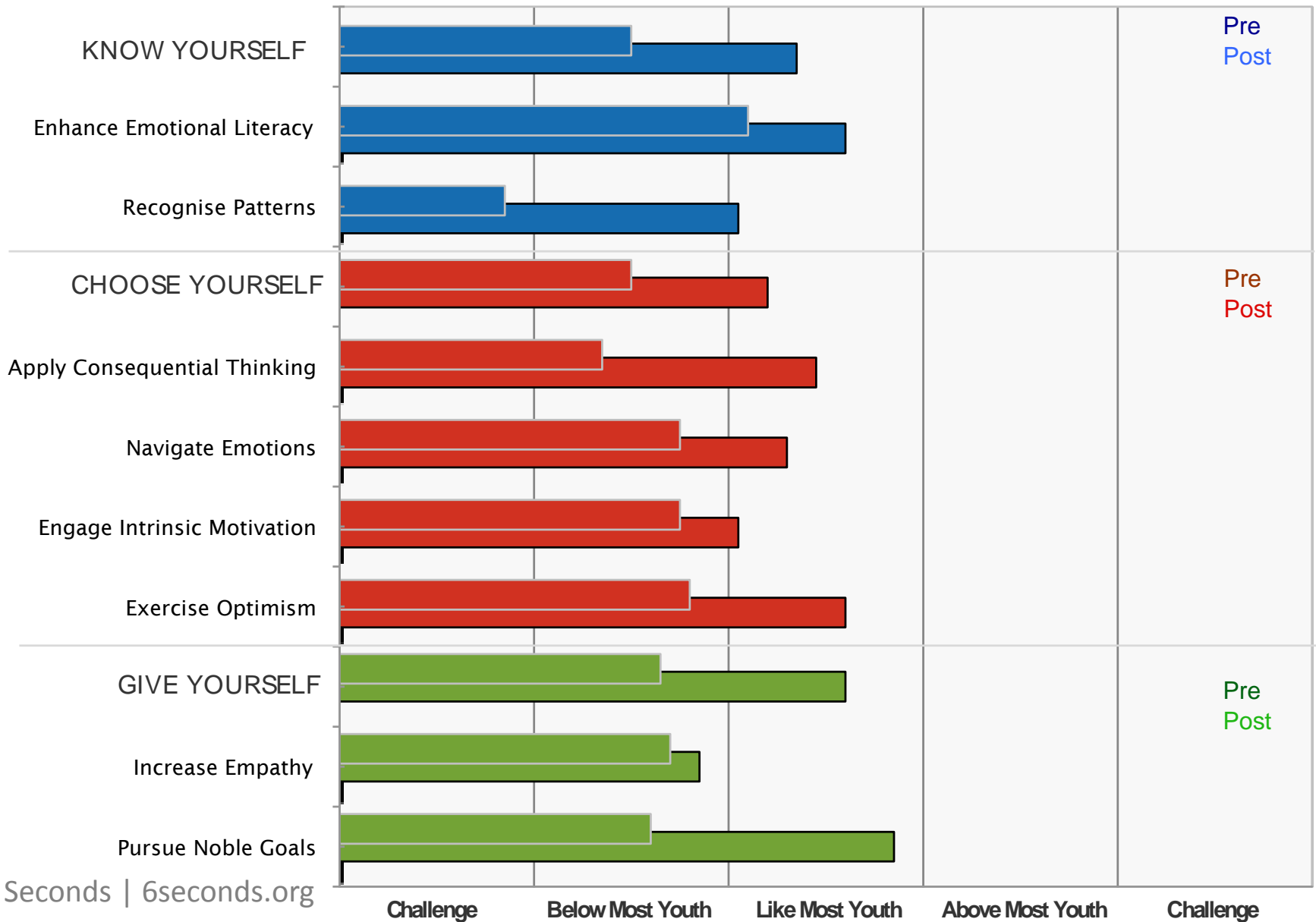
Case: Dexter's School



Mark




Pre & Post



Embrace Life



Summer Solstice
www.summersolstice.gov.uk
Film © 2010 SOSP. All Rights Reserved.

- 
- Remember:
1. Know Why.
 2. Use Robust Measures.
 3. EQ Competencies are Foundations for Success.

josh@6seconds.org