

Bicudo-do-algodoeiro: Biologia Ecologia e Dificuldades de Controle



Dr. Guilherme Gomes Rolim



Entomologista

guilhermerolim@imamt.org.br



*Anthonomus
grandis grandis*

- Bicudo-do-algodoeiro: *Anthonomus grandis grandis* Boh.
- Praga limitante
- Elevando potencial reprodutivo
- Sobrevivência na entressafra
- Difícil controle





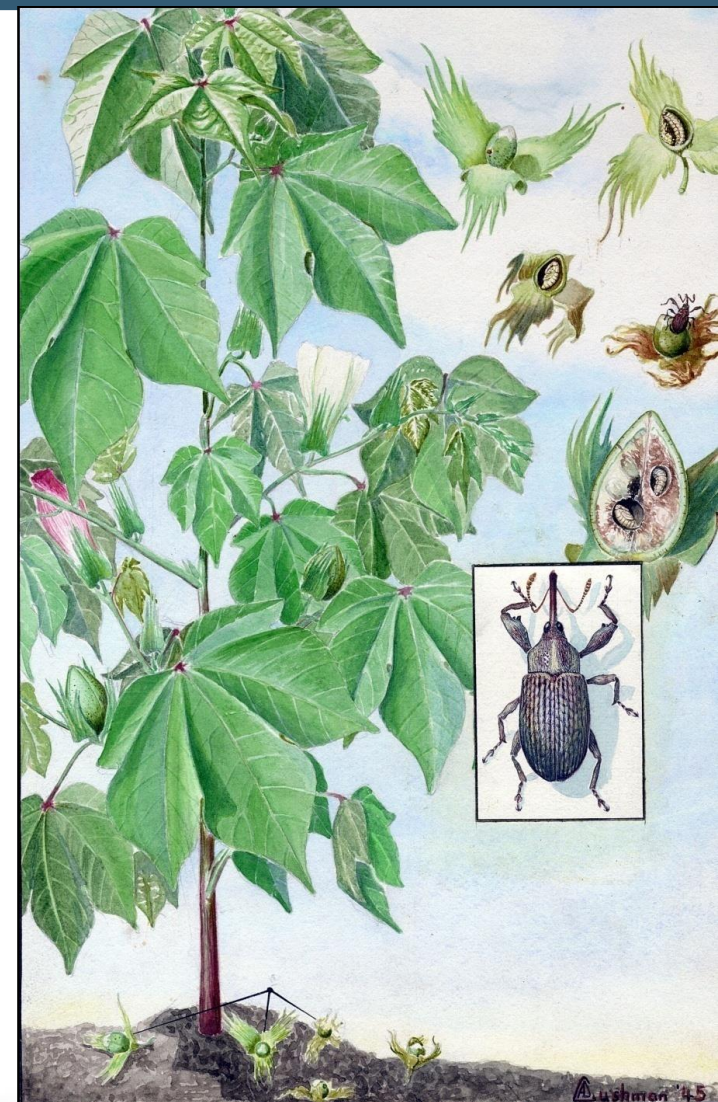
Biologia





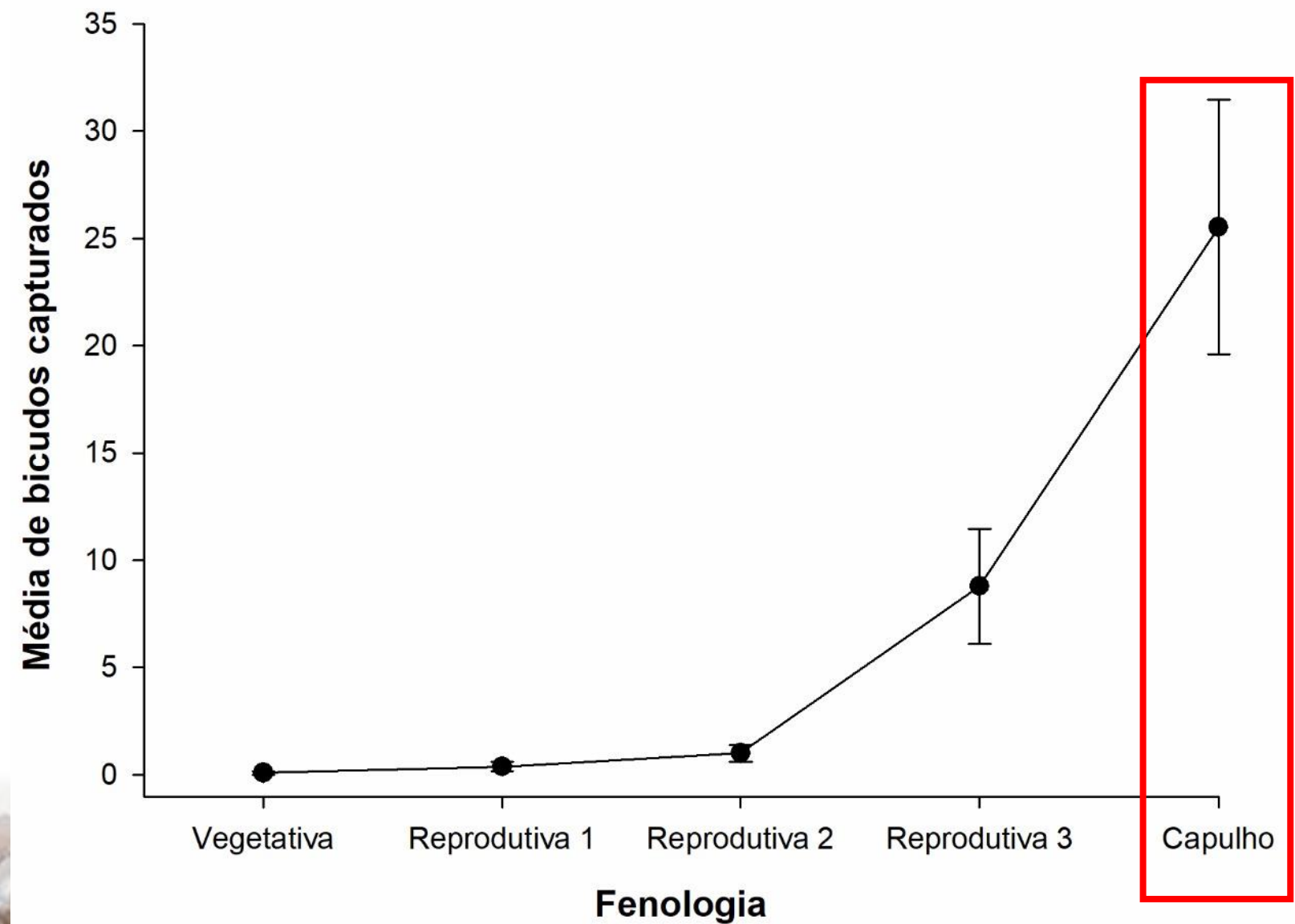
Ecologia

- 5-6 gerações durante o cultivo;
- Maioria dos adultos são oriundos de maçãs na última geração
- Abandonam a lavoura na época da colheita
- Retornam a lavoura na época da floração
- Adultos de fim de safra são maiores e possuem mais reservas
- Como sobrevivem na entressafra?





Dinâmica populacional durante a safra





Fim de safra



(Rolim & Arruda 2017)



Dinâmica populacional na entressafra

- Grande capacidade de dispersar (~272 km em algumas semanas)
- Alimentação em plantas nativas e/ou daninhas (pólen e/ou frutos)
- 15% da população sobrevive mais de 120 dias em pólen
- Permanecer “presos” dentro das estruturas



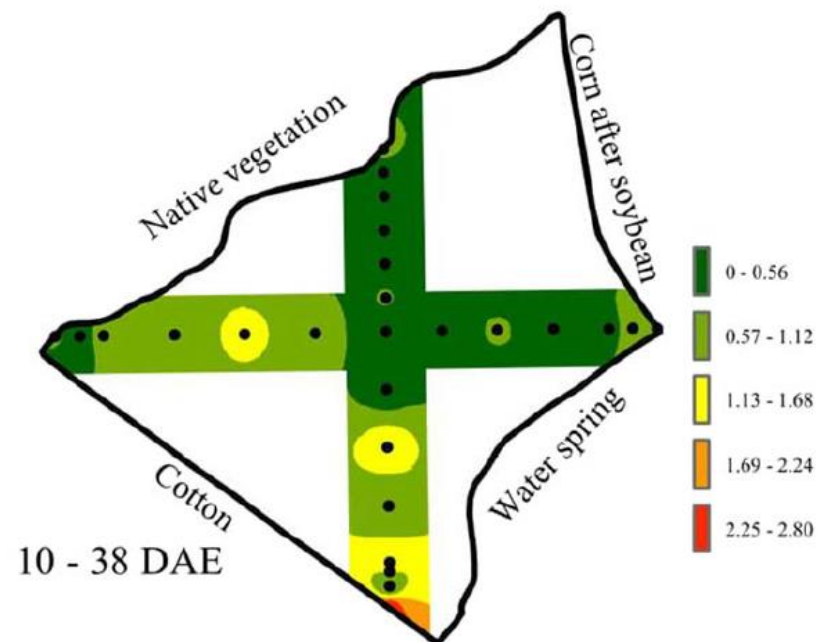


Dinâmica populacional na entressafra

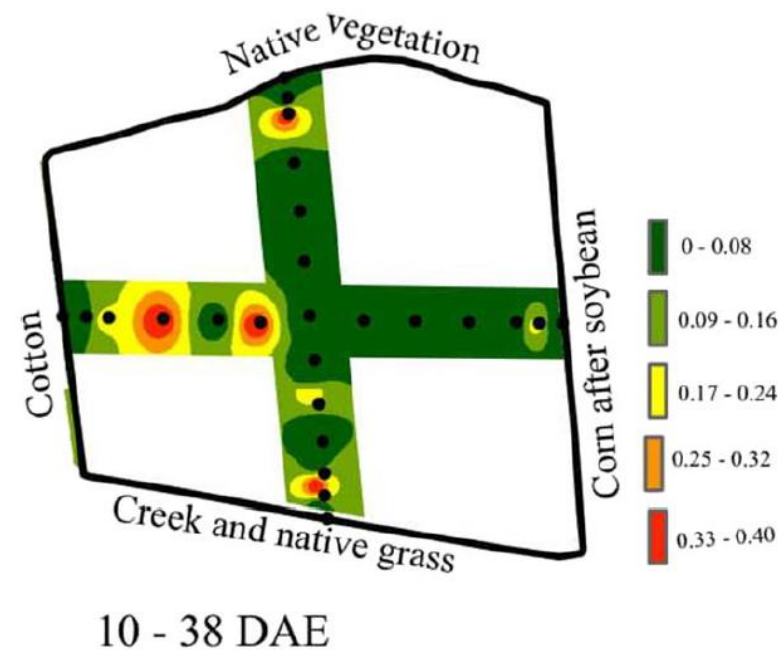




Dispersão



Serra da Petroviana 16/17

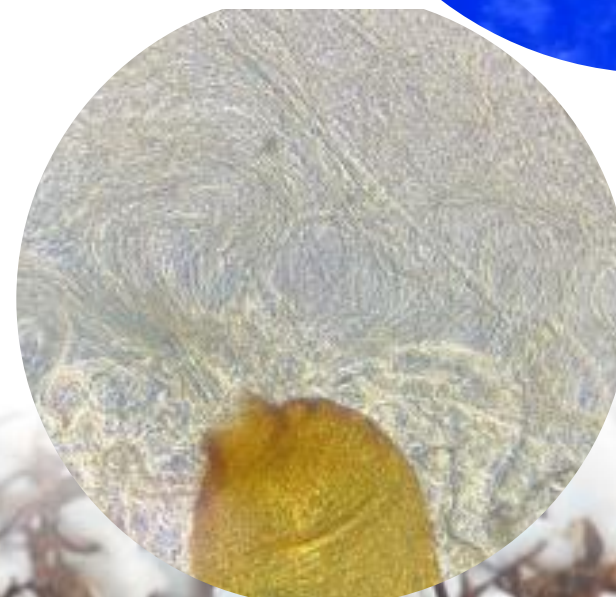
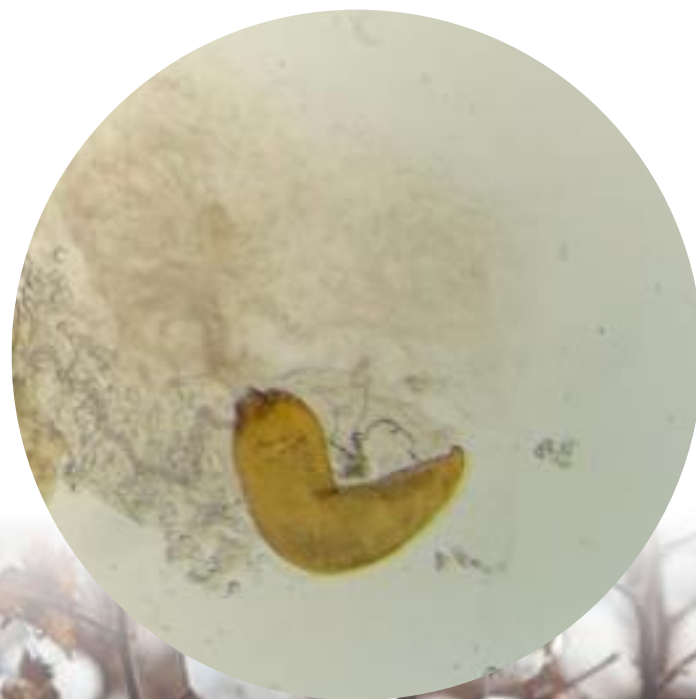


Campo Verde 17/18



Dispersão

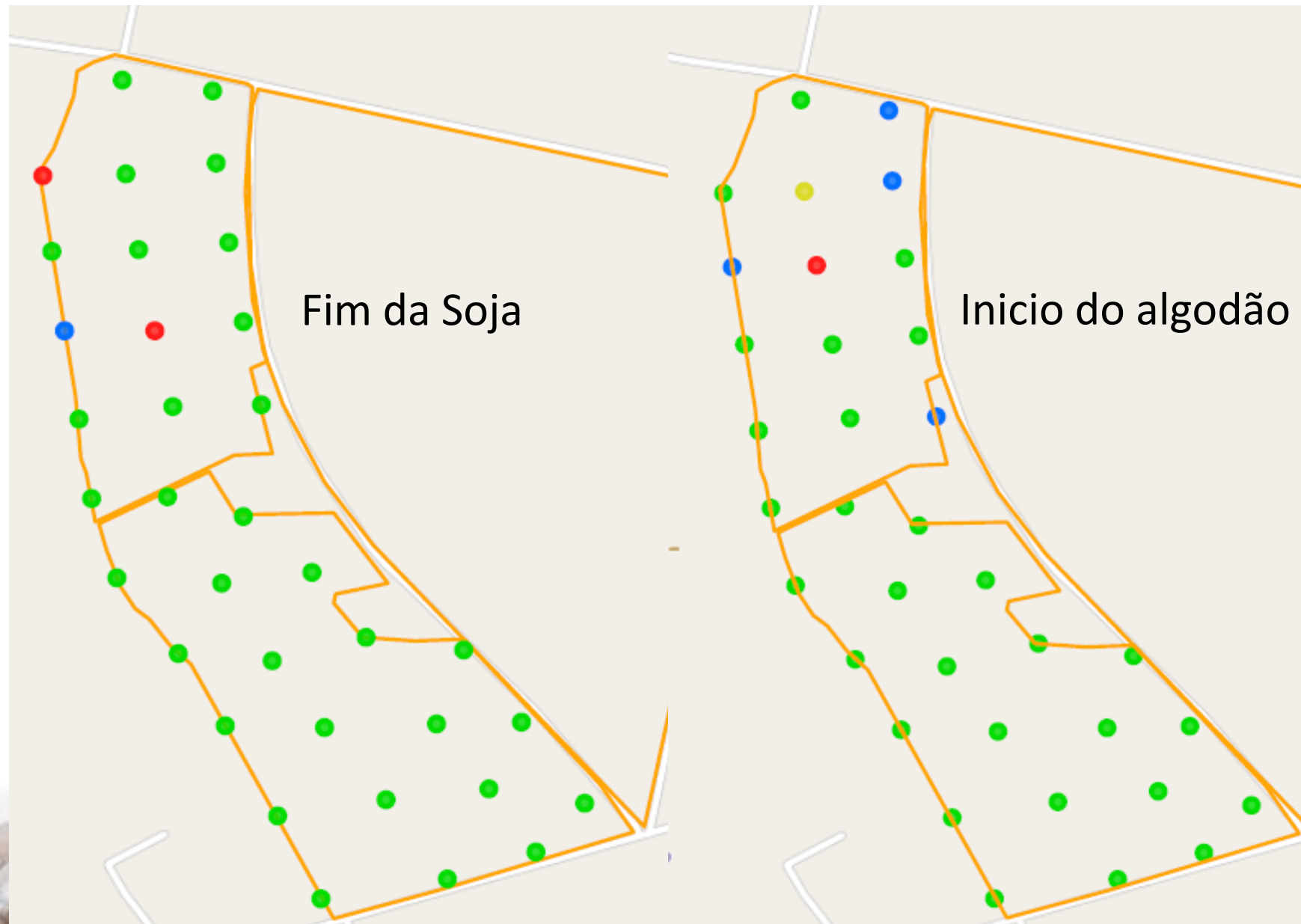
- 41 ♀ dissecadas
- 60,9% com espermateca cheia

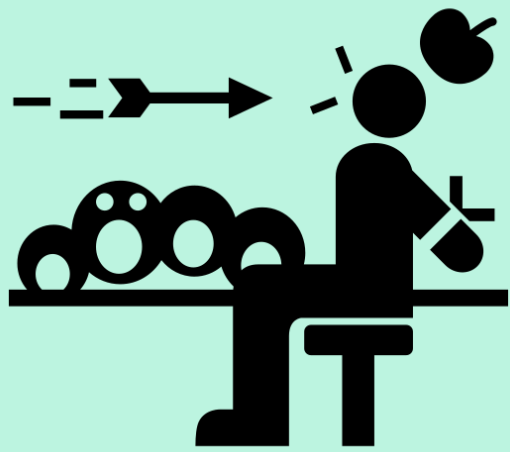


(Rolim 2022 pesquisa em andamento)



Dispersão



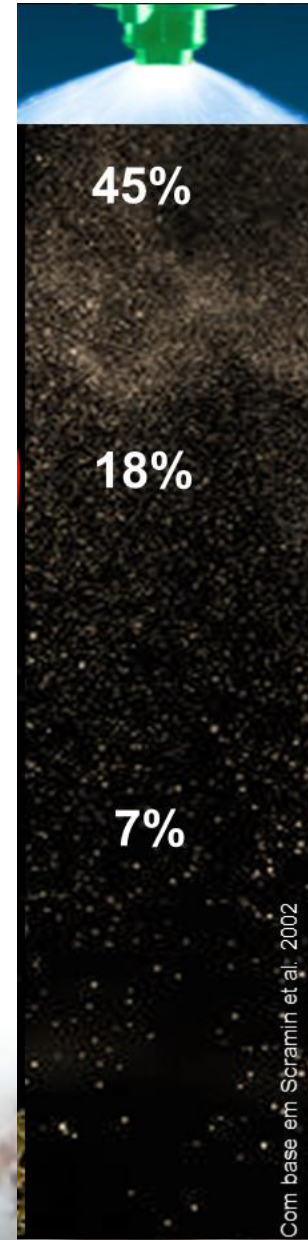
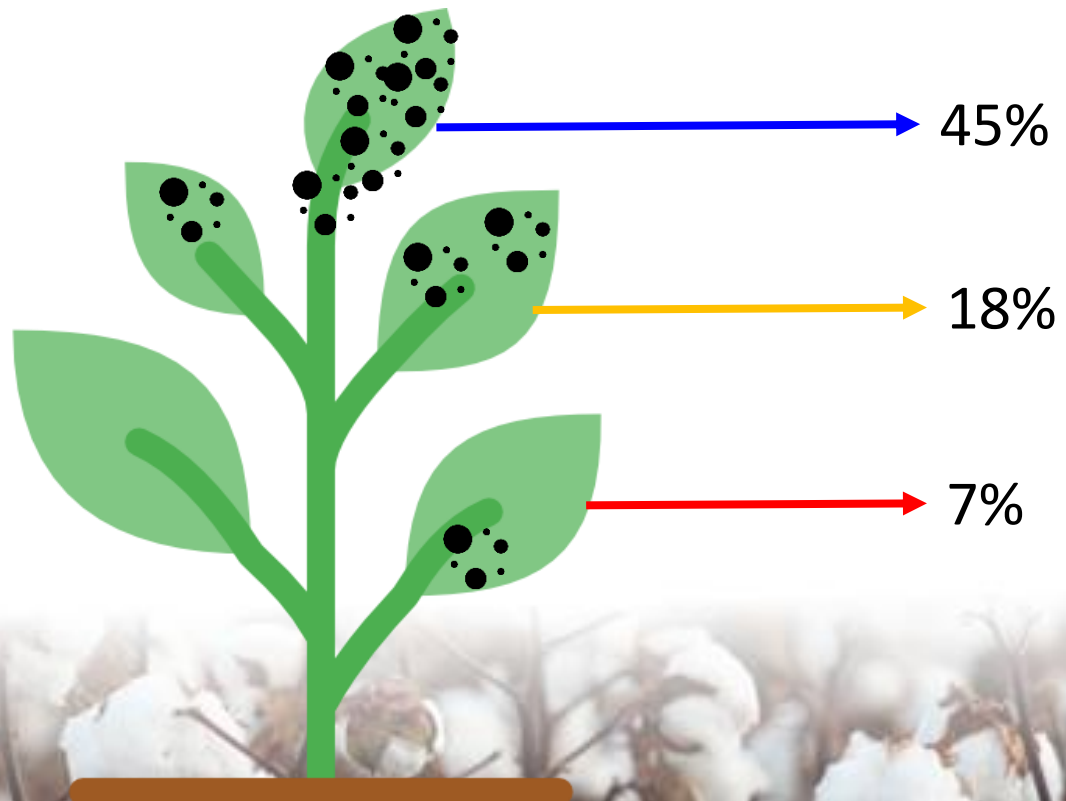


Alvo difícil





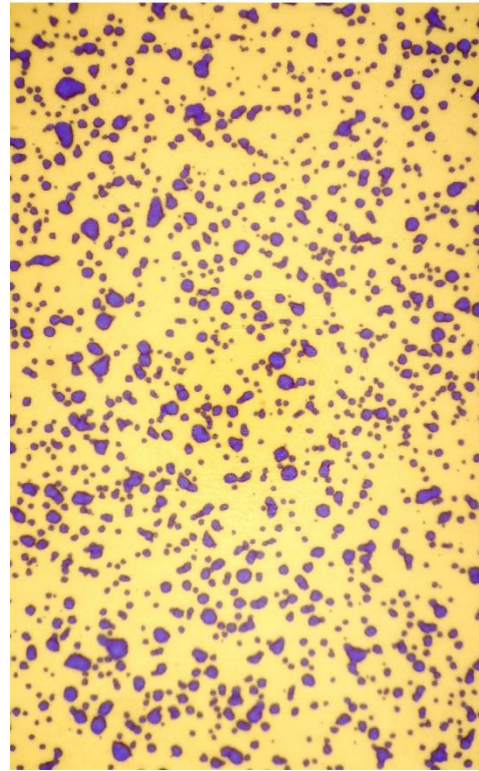
Deposição de calda



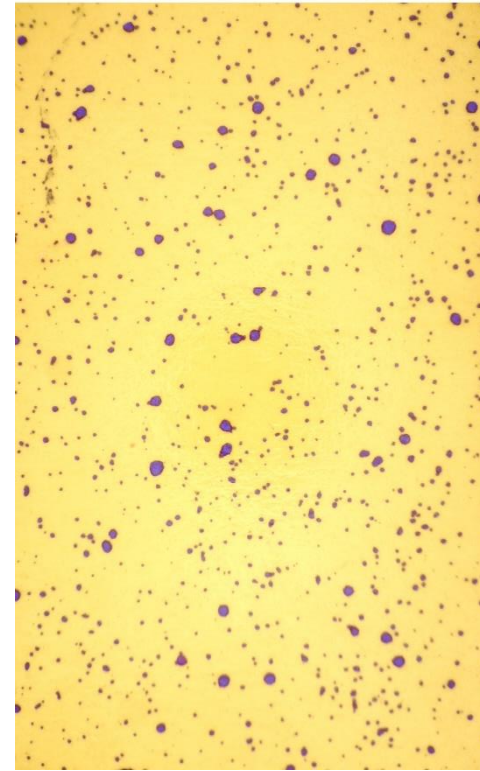
Com base em Scramin et al. 2002



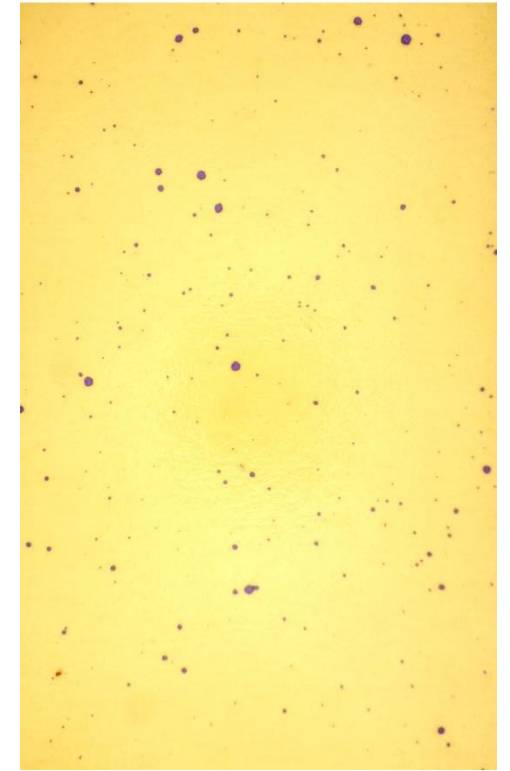
Deposição de calda



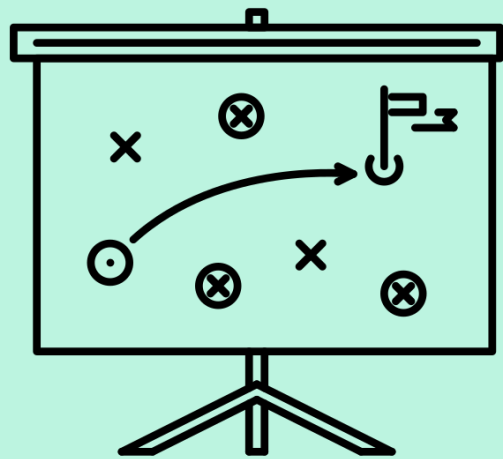
Terço Superior
Nº de gotas = 349/cm²



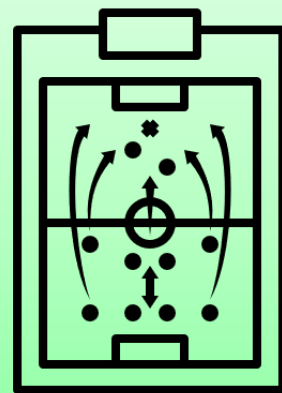
Terço Médio
Nº de gotas = 166/cm²



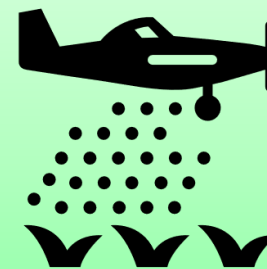
Terço Inferior
Nº de gotas = 17/cm²



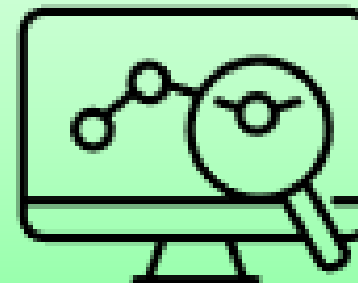
Estratégias



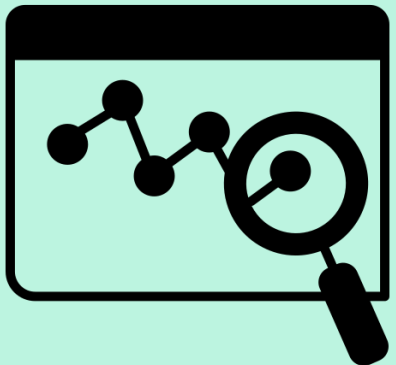
Planejamento



Execução

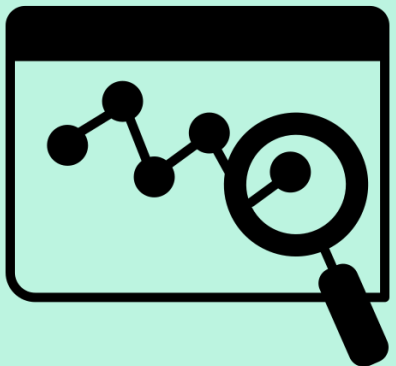


Monitoramento

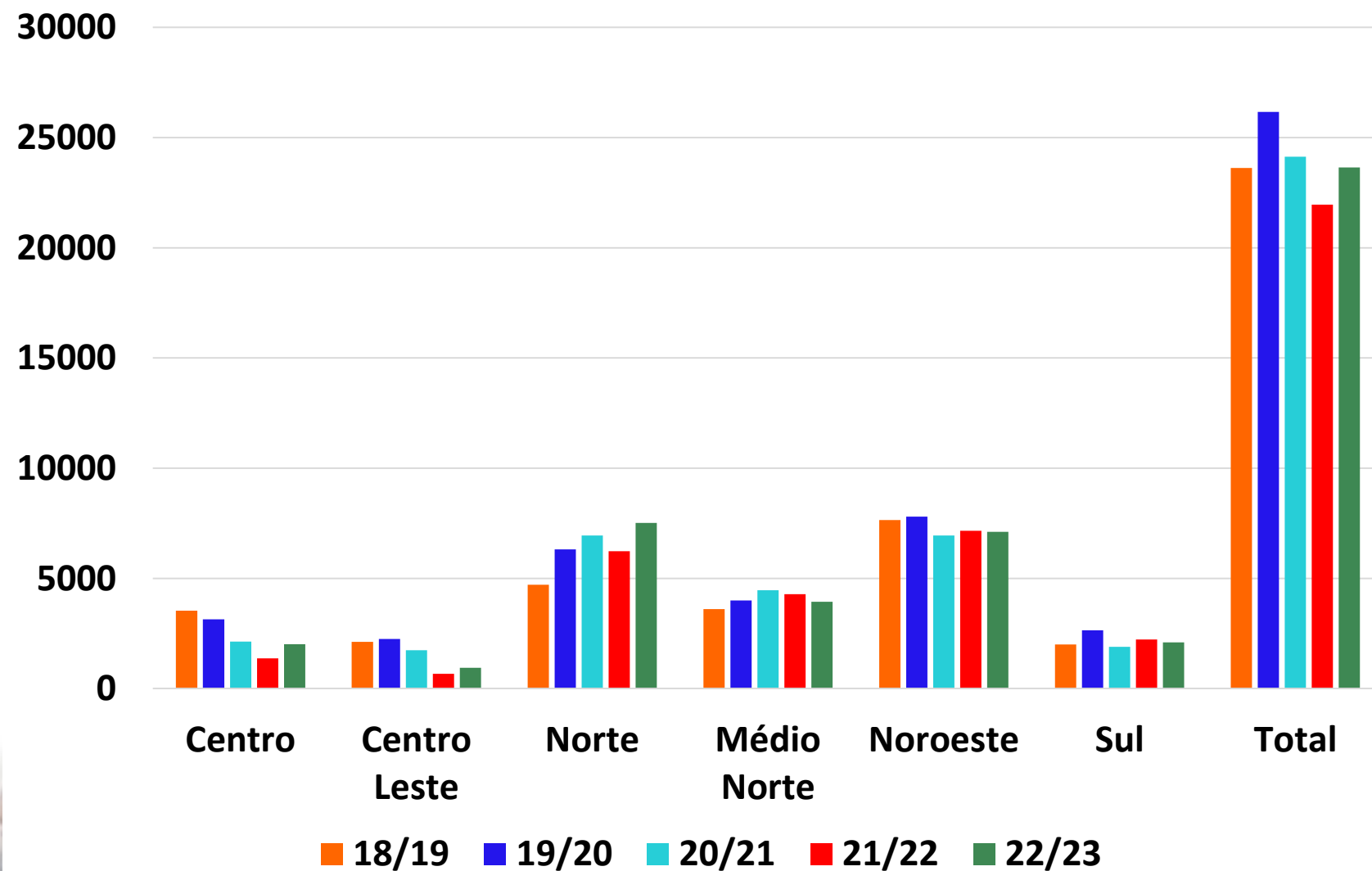


Monitoramento





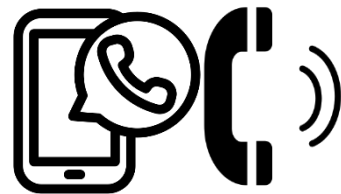
Monitoramento Base de dados (CEB)



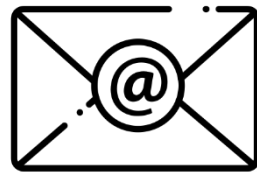
Obrigado!



**Todos juntos, todos contra o
bicudo !**



(66) 99682-5330



guilhermerolim@imamt.org.br