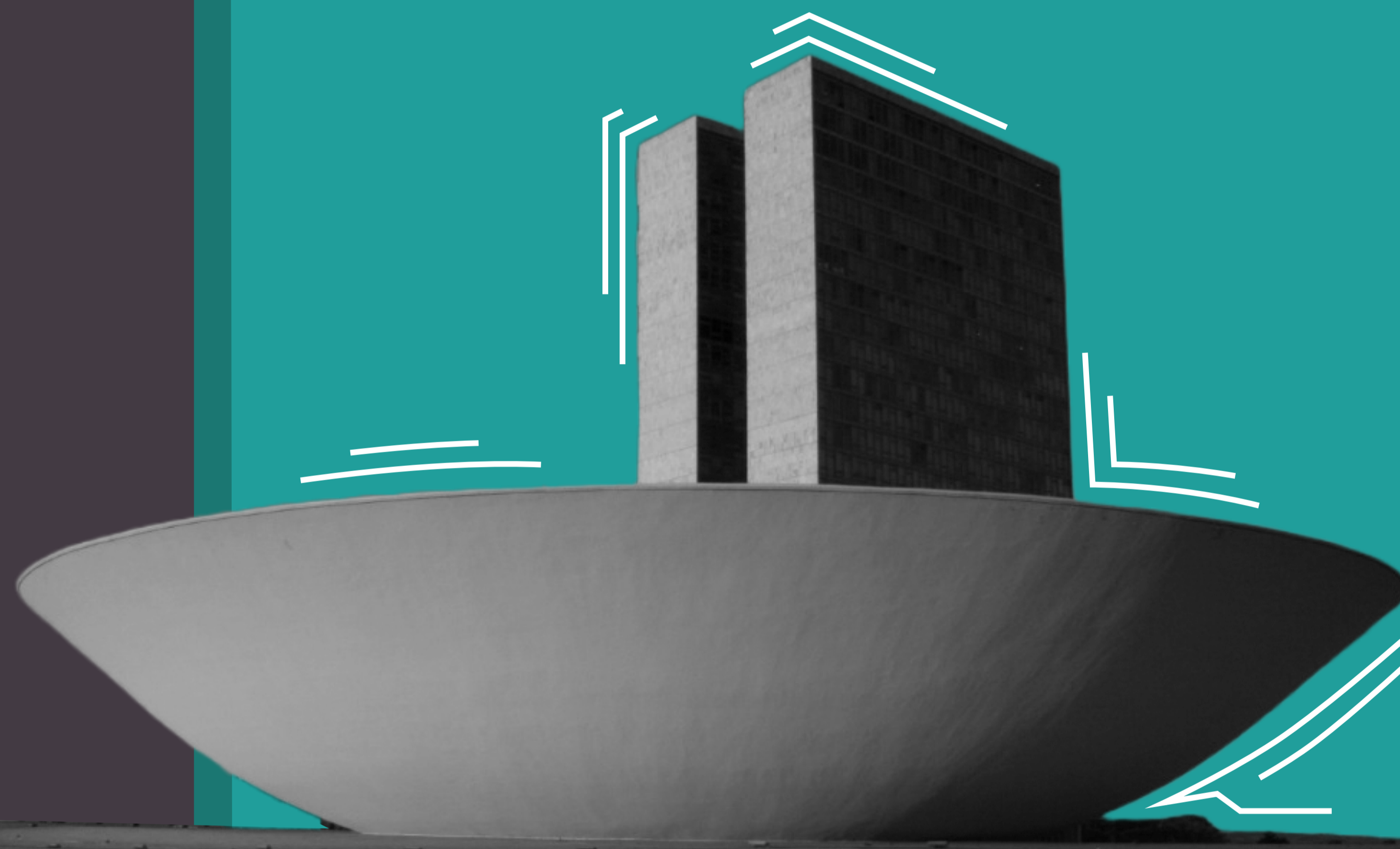
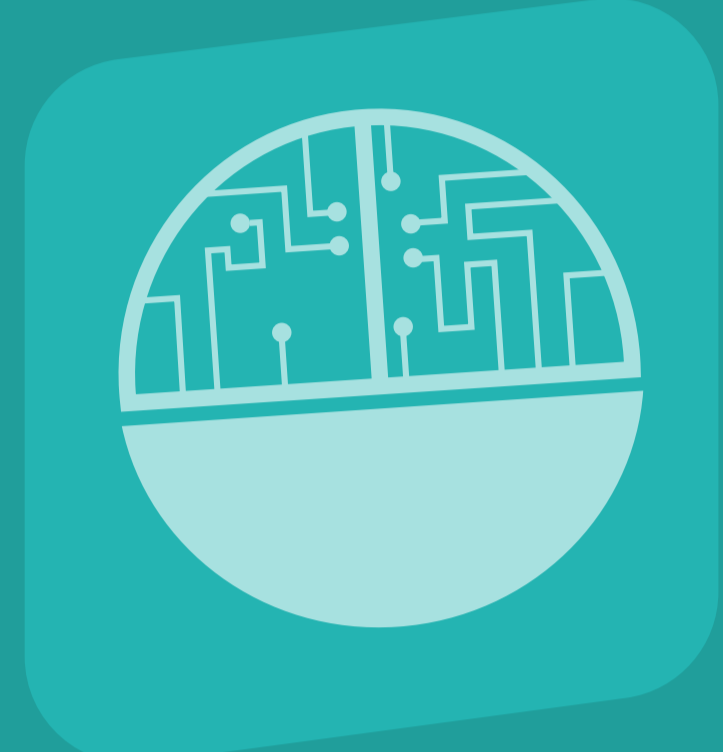




# DIGITAL TRANSFORMATION STRATEGY OF BRAZILIAN CHAMBER OF DEPUTIES

» 2021-2024



**CHAMBER OF DEPUTIES OF BRAZIL**

» THE DIGITAL TRANSFORMATION  
THAT CONNECTS US «

# DIGITAL GOALS



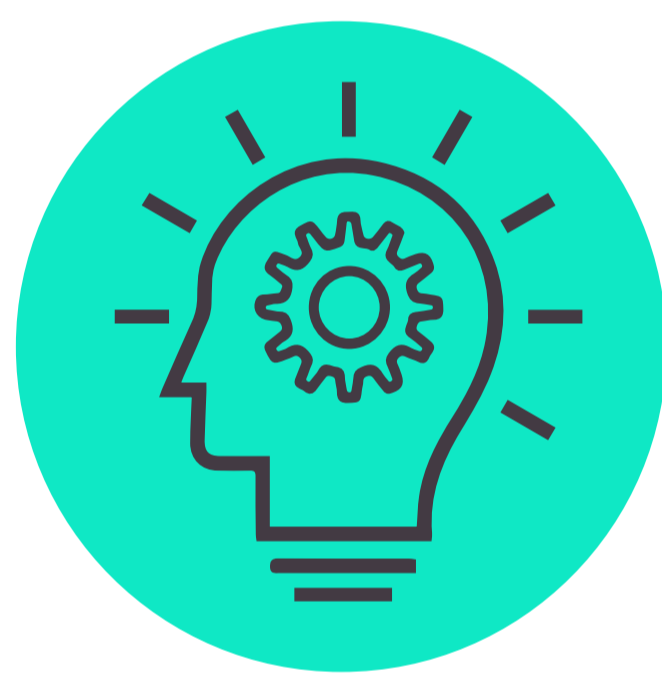
## BOOSTING THE DIGITAL TRANSFORMATION OF THE LEGISLATIVE PROCESS

Restructuring the services that support the legislative process in order to make them digital and integrated, modern, secure, more efficient and with easy access at any time and anywhere.



## SUPPORTING GOVERNANCE AND MANAGEMENT BASED ON DATA

Implementation of normative, procedural and technological mechanisms that use data evidence for supporting decision-making at different hierarchical levels of the institution.



## LEVERAGE DIGITAL INNOVATION

Boost the innovation process through digital solutions that add value to the legislative process, enhancing the quality of laws, bringing together representatives and represented and improving the management of the Chamber of Deputies.



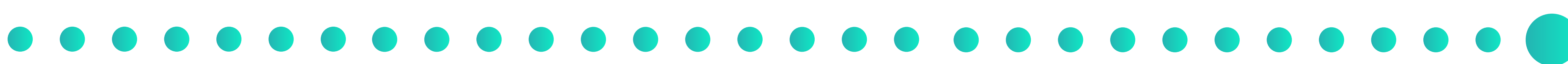
## INCREASE WORKFORCE EFFICIENCY THROUGH DIGITAL SOLUTIONS

Restructure organizational processes in a digital conception, making them the fastest, simplest, most integrated, manageable and efficient.



## INCREASE DIGITAL CONFIDENCE

Ensure reliable, sustainable, secure, available, and accessible digital environment appropriately sized to meet transformation needs digital version of the Chamber of Deputies.

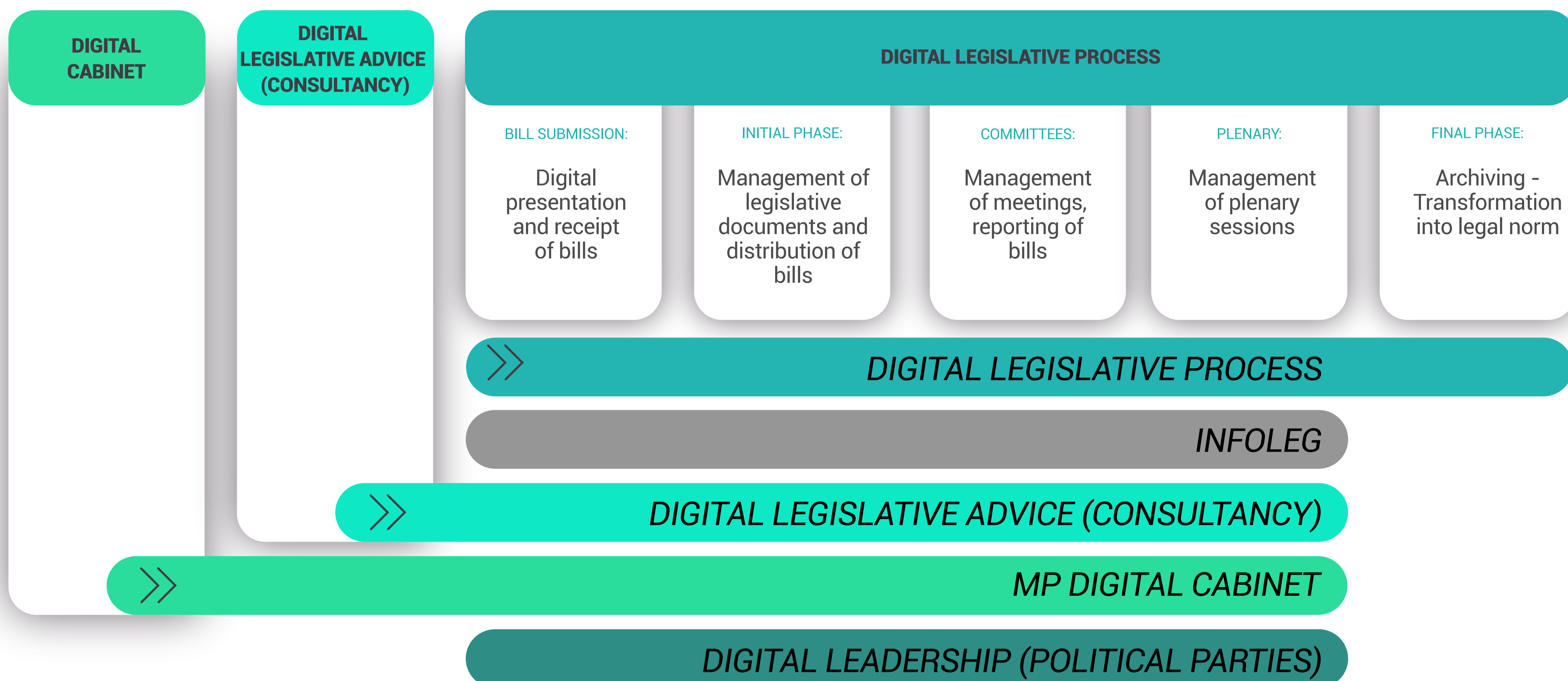




# PROGRAM

## LEGISLATIVE DIGITAL PLATFORM

Harmoniously organized projects so that services required for the process legislation are built on a digital plane.



### MP Digital Cabinet 2.0:

DG2

Evolution of the Digital Cabinet platform including requests for work from legislative consultancies, editing of legislative texts, management of permission delegations, reception of documents for possession of parliamentary secretary, integration with the People Management System, dissemination of legislative consultancy infographics.

### Digital legislative advice (consultancy for bill drafting):

ALD

Digital platform that brings together services necessary for legislative advice throughout the entire cycle of the legislative process. In the legislative context, it is integrated into the digital legislative process, includes research and complex analyzes necessary for the quality and timeliness of the work advice provided by legislative consultants; aggregation and organization of information produced by Information Department, editing of legislative text (bills and amendments), comparative searches of bills and laws from other parliaments. In the administrative context, receiving and automatically routing requests from parliamentarians, requests and workforce management, producing indicators and dynamic management panels.

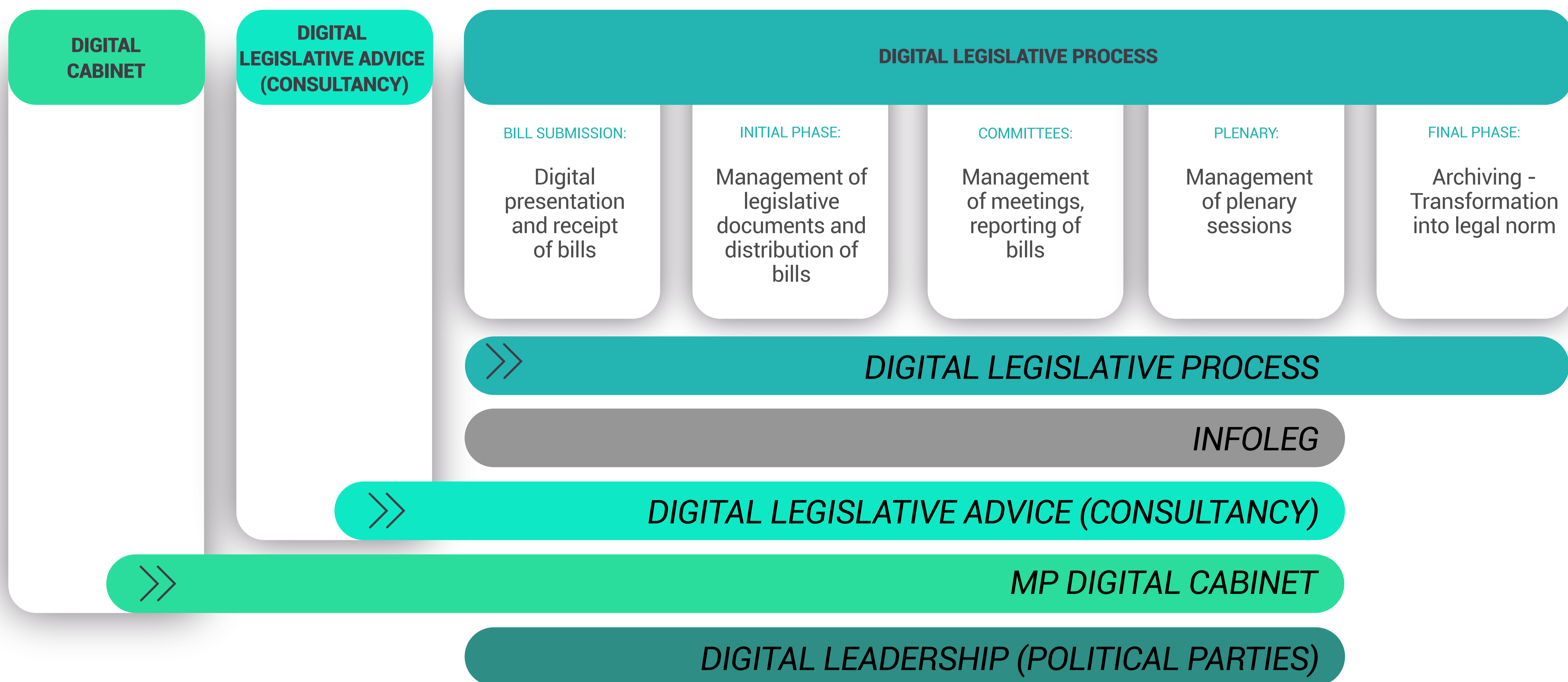
### Infoleg 4.0

INF4

Evolution of the Infoleg app including new technological architecture and design; digital signature of bills and draft orders; and advances in security mechanisms. It will take into account all the developments that the legislative process will receive in its digital version.



Harmoniously organized projects so that services required for the process legislation are built on a digital plane.



## Digital legislative process:

**PLD**

Development and implementation of integrated systems in order to cover uninterrupted all stages of the legislative process in digital media: preparation of the text, bill submission, committee meeting management, session management plenary sessions, until archiving and forwarding the law text for publication.

It must include advanced searches and panels to support complex and timely to the rite of the legislative process.

## Digital Leadership:

**LD**

Digital platform that integrates administrative management services a party leadership at the service of its support to parliamentarians in the legislative process. It includes several leadership management routines, from monitoring of events in the legislative process, distribution of tasks, drafting the opinions, assisted editing of documents necessary for the performance of leaders at committee meetings and plenary sessions.

## Digital collaborative work platform with mobility:

**Colab**

Integrated set of digital services that enable full work mobility for CD employees integrating remote work with in-person work. Among the integrated services included in a collaboration model, the following can be highlighted: chat service, e-mail, cloud storage.



## PROGRAM

# DATA

Projects necessary for the legislative digital platform to work properly integrated and that complex research and analysis can enrich the legislative production in a timely manner.

Additionally, other Chamber work processes benefit from data correctly managed, including those associated with the General Law for the Protection of Personal data.

As a consequence, decision-making in the institution may be better based on data evidence.

### Data Governance:

GovD

Implementation of Data Governance within the scope of the Chamber of Deputies, by means of policy and regulations, inventory and data catalog, tools, alerts, filters, searches and processes that ensure the quality, security and integrity of data hosted by systems under the responsibility of the Chamber of Deputies.

Standardized and implemented procedures and configurations must enable selection and reliable treatment of data to be used by the algorithms artificial intelligence.

The actions involve compliance requirements such as the Law for Information (LAI) and LGPD (Law for Personal Data Protection)

### Digital Data Literacy:

AIfD

Set of actions in order enable the CD civil servants and MPs to understand, communicate and build complex graphics, visualization techniques and tools, research to support bills and dashboards. Among the planned actions, tutorials, lectures, workshops and general training or aimed at work processes that are digitally reviewed.

### Dashboards for performance management at CD:

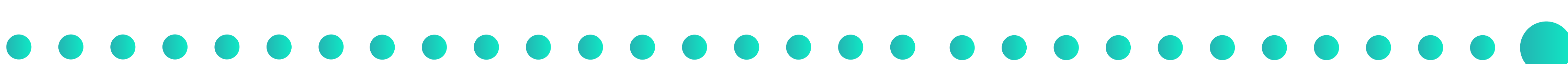
PGD

Analytical panels that enable performance management of the institution's units and processes the Chamber of Deputies.

### Policy and processes for the development and ethical use of artificial intelligence (AI Governance):

ETIC

Regulations and work processes that promote the construction and use of intelligence artificial in the Chamber of Deputies in compliance with ethical principles.





## PROGRAM

# DIGITAL TRUST

Projects necessary for the legislative digital platform to work properly secure being accessed by parliamentarians, Chamber collaborators and citizens, with guarantees of integrity, authenticity, confidentiality (when necessary) and availability.

The program's projects range from technological elements (applications, systems, portals, data, remote connections, equipment and the datacenter) to work procedures.

In addition to providing security, the program aims to disseminate a culture of how act correctly in the cyber environment, generating conditions for its users to that everyone feels safe.

### Citizen Login 3.0:

LC3

Reconstruction of citizen authentication mechanisms in digital services they are directed to standardize the user experience with greater security and avoid false digital profiles. As a consequence, the aim is to reduce the volume of personal data of citizens on property in the Chamber of Deputies, minimizing personal data governance issues.

### Strengthening digital security mechanisms, confidentiality, integrity and audit:

AUT

Implementation of more robust authentication mechanisms for authentication that enable at least a second authentication factor, and for more critical cases, multiple biometric recognition for digital services. In the same services, improve processes and management mechanisms permits and building audit trails.

### Digital Services Security Monitoring Center:

CSD

Implementation of a center for monitoring digital security incidents associated with digital services. Shall encompass processes, tools and service agreements established between IT Directorate and others administrative units of the CD.



## PROGRAM

# ULYSSES – ARTIFICIAL INTELLIGENCE OF THE BRAZILIAN CHAMBER OF DEPUTIES

Set of artificial intelligence algorithms built to sustain diverse functionalities necessary for the legislative digital platform.

They were designed so that the algorithm learning process can be adjusted to different databases, enabling its use by various systems in the Chamber, enhancing gains in scale and adding value to its services digital.

**Algorithm for automatic distribution of requests to groups of consultants:**



Enhancement of the machine learning algorithm that reads the text of requests forwarded by parliamentary offices to legislative consultancy, interprets and directs demand to the group of consultants best suited to treat the request.

**Algorithm for semantic searching for technical studies and bills similar to those requests received from the Digital Cabinet:**



Algorithm that, through natural language processing, reads the text of requests forwarded by parliamentary offices to legislative consultancy, and searches for technical studies and similar bills (semantic analysis) to be able to assist consultants in drafting new legislative texts.

Based on knowledge of very similar studies or bills, consultancy You can also decide to notify the requesting parliamentarian.

**Algorithm for identifying the impact of amendments in the text of the proposition:**



Algorithm that, through natural language processing, identifies suitable positioning of amendments in excerpts of propositions.

It is also intended to identify when several amendments are similar.

It is intended that processing be done in almost real time upon receipt of propositions.

**Automatic speech to text transcription:**



Service that includes an algorithm for interpreting generic speech in voice and the transcribe to digital text.

It is intended to be incorporated into the systems that support the current shorthand system, incorporated into the digital legislative process as well as other text inputs in the said process.

**Algorithm for general analysis of arguments on topics:**



Algorithm that analyzes a text from a semantic aspect, checking arguments about a proposition or a general theme.

To be used in the interpretation of parliamentary speeches and in reception channels citizen opinion, such as the CD poll.





## PROGRAM

# DIGITAL WORK PROCESS

Projects to model, implement and optimize work processes in digital format, enabling:

- » Freeing people from activities that can be replaced by services automated or semi-automated;
- » Increase the quality of services provided with low or inadequate digitization or automation of processes;
- » Manage effective servers that are in digitalized processes and remote work condition.

The implemented processes can receive strong improvements in terms of digital security, be provided with conventional data analysis or with the use of artificial intelligence, generate indicators or use analytical panels.

### Modeling and implementation of digital processes

Pdig

Modeling, development and optimization of digital processes that automate workflows of the Chamber of Deputies units.

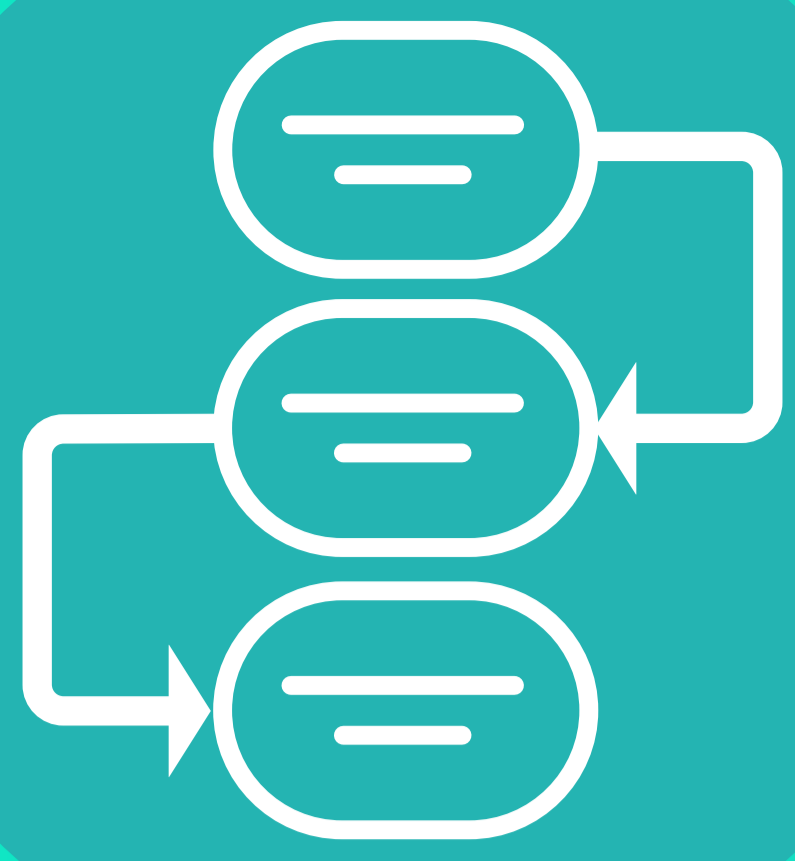
### Remote Work People Management System

SGT

Development and implementation of a system that enables work management carried out by civil servants and commissioners who are working in a remote work at the Chamber of Deputies.

It must include integration with the People Management System of the Chamber of Deputies.





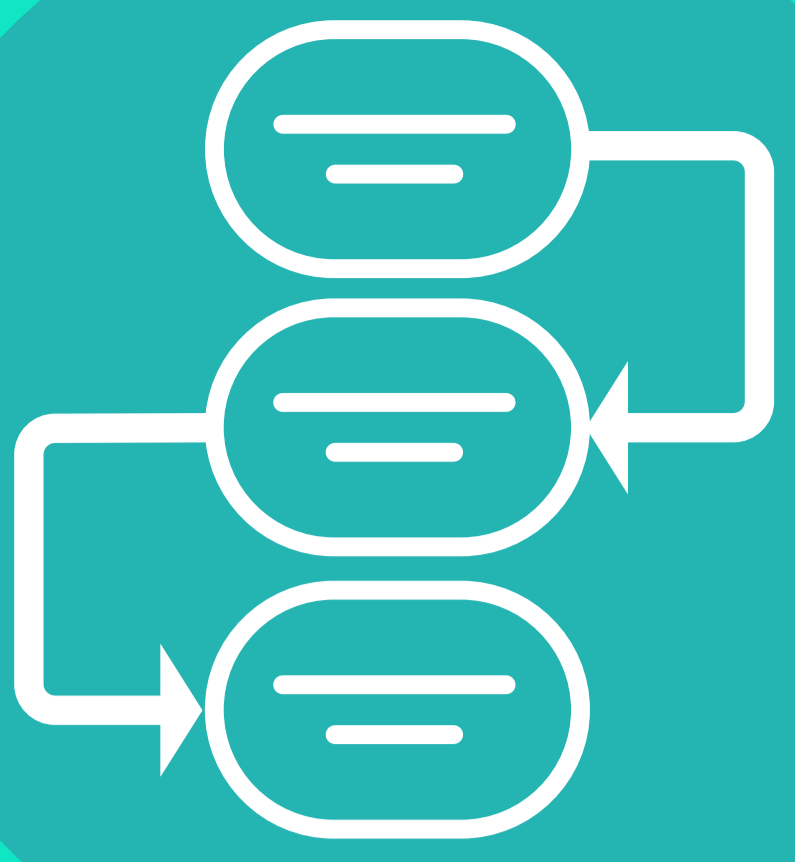
# PROGRAM

## DEPENDENCIES AND INTERACTIONS

### DEPENDENCIES AND INTERACTIONS BETWEEN CD DIGITAL PROJECTS



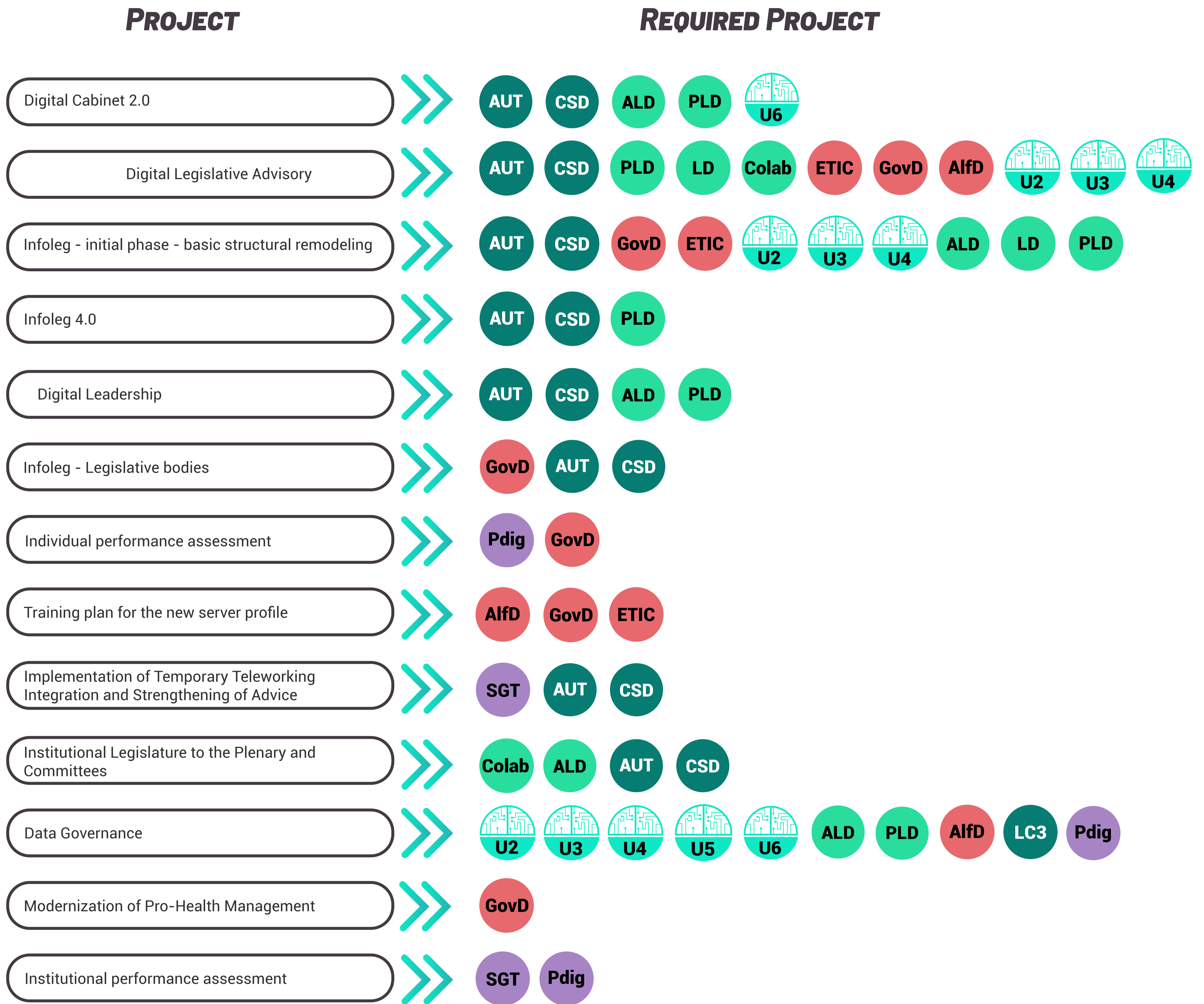
PROJECT	REQUIRED PROJECT
Digital Cabinet 2.0	AUT CSD ALD PLD U6
Digital Legislative Advisory	AUT CSD PLD LD Colab ETIC GovD AlFD U2 U3 U4
Digital Legislative Process	AUT CSD GovD ETIC ALD LD U2 U3 U5
Infoleg 4.0	AUT CSD PLD
Digital Leadership	AUT CSD ALD PLD
Ulysses	GovD ETIC
Digital platform for collaborative work with mobility	AUT CSD ALD
People Management System in Remote Work	AUT CSD
Data Governance	U2 U3 U4 U5 U6 ALD PLD AlFD LC3 Pdig
Digital Data Literacy	GovD ETIC
Dashboards for performance management at CD	SGT
Citizen Login 3.0	GovD ETIC
Modeling and implementation of digital processes	GovD



# PROGRAMA

## DEPENDENCIES AND INTERACTIONS

### DEPENDENCIES BETWEEN CORPORATE STRATEGY PROJECTS AND CD PROJECTS



Diretoria de  
Inovação e Tecnologia  
da Informação



**CHAMBER OF DEPUTIES OF BRAZIL**

» THE DIGITAL TRANSFORMATION  
THAT CONNECTS US «